

REC'D: December 12, 1977

112950

AT 10:30 CLOCK Roll

RECORDED: Dec. 12, 1977

HOLMES CO. Plat VOL. 8 PG. 22

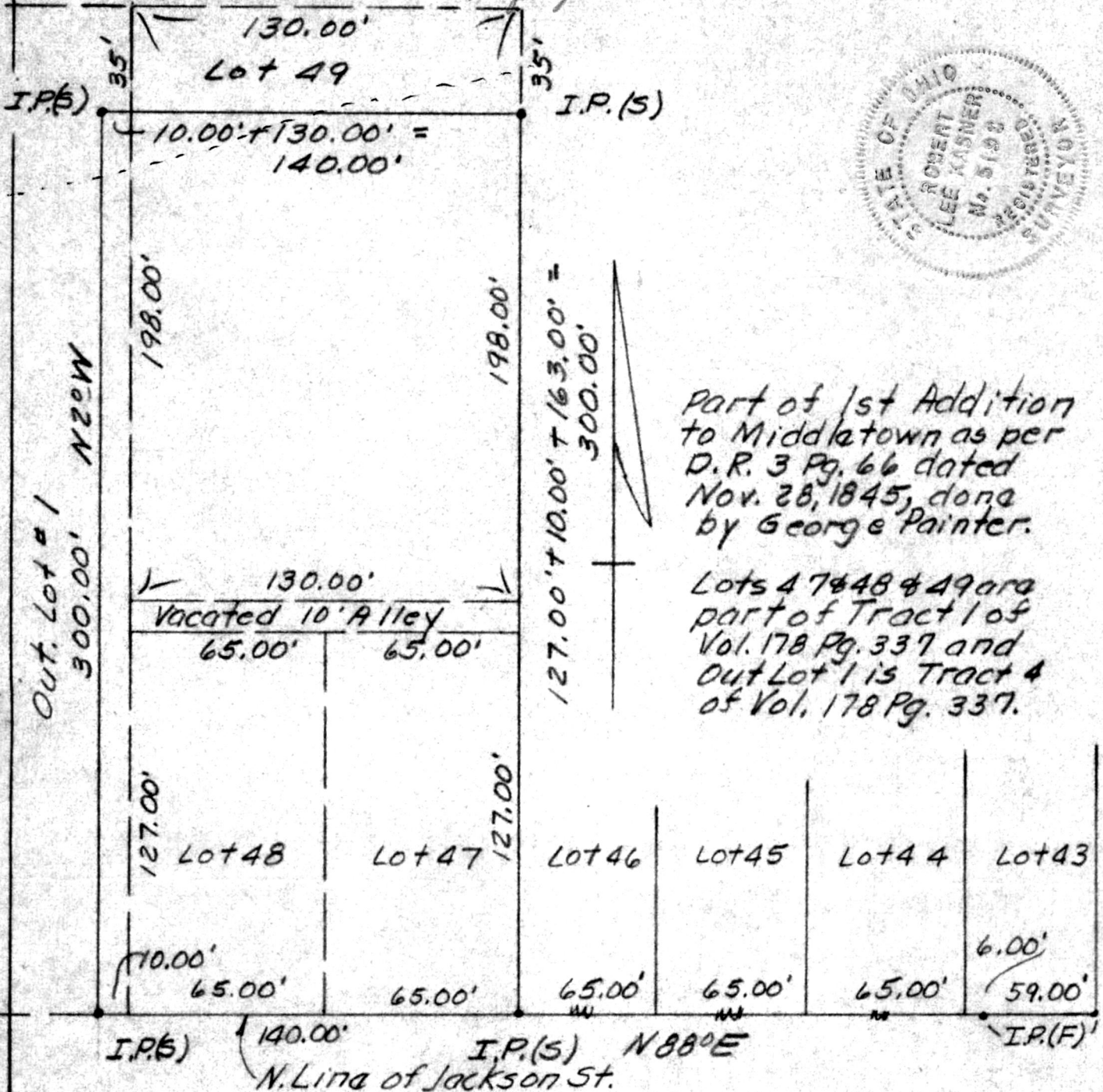
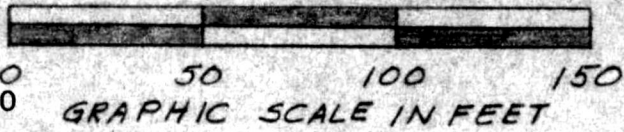
FEE: \$ 2.00

Deed Vol. 200

Page 597

Richard H. Hume RECORDERS

Mary E. Yoder



Part of 1st Addition to Middletown as per D.R. 3 Pg. 66 dated Nov. 28, 1845, done by George Painter.

Lots 47 & 48 & 49 are part of Tract 1 of Vol. 178 Pg. 337 and Out Lot 1 is Tract 4 of Vol. 178 Pg. 337.

Robert L. Kasner
R.S. 5193

PLAT OF A SURVEY FOR
MARY E. YODER

— Grantee —

Known as part of S.E. 1/4 S 2
T. 14 N R. 12 W of Salt Creek Twp.
Hol. Co., Ohio

MAP OFFICE COPY

8/29/77