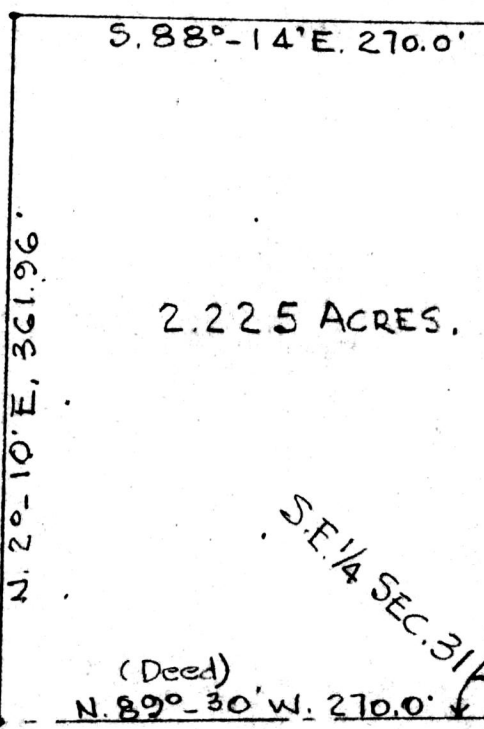


JOHN L. & SCHLABACH
VOL. 108, PG. 407

(Deed S. 0°-45'W)



TWP. RD. 216

S.E. 1/4 SEC. 31

S.W. 1/4 SEC. 32



112607

REC'D November 3, 1977
AT 2:18 O'CLOCK P.M.
RECORDED Nov. 4, 1977
HOLMES CO Plot VOL. 8 PG. 101
FEE: \$2.00
Richard Thomas RECORDER

Wayne Schlach
Deed Vol. 200-Pg. 269

PLAT OF A SURVEY OF A PART OF THE S.E. 1/4 OF SEC. 31, TWP. 15, RANGE 11, PAINT TOWNSHIP, HOLMES COUNTY, OHIO TO CONVEY A PARCEL FROM SCHLABACH TO SCHLABACH.
SCALE 1"=100'
OCT. 29, 1977
R.H. HUNSINGER, #3685, REGISTERED SURVEYOR.



MAP OFFICE COPY