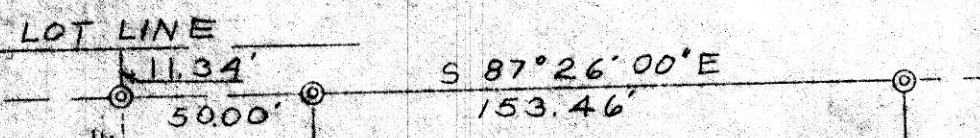


4 TWP. RD. 207



N 2° 34' 00" E

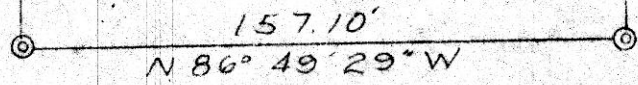
RHINE ROAD

N 2° 34' 00" E  
256.16'

LOT 1  
FIRST STUTZMAN  
SUBDIVISION

257.85'  
S 1° 46' 34" W  
LEE STEINER

0.916 Ac.



112588

REC'D: November 2, 1977  
AT 11:23 O'CLOCK A.M.  
RECORDED: Nov. 2, 1977  
HOLMES CO. Plat VOL. 8 PG. 97  
FEE: \$3.00  
Richard Krause RECORDED  
Deed Vol. 200-Pg. 254  
P. M. ...

CONCRET MONUMENT

SEE

PLAT VOL. 7, Page 733  
Plat. Vol. 2A, Page 167

PLAT OF A TRACT OF LAND  
IN

LOT 21, FIRST QUARTER  
RANGE 6W, TOWNSHIP 9N  
BERLIN TOWNSHIP  
HOLMES COUNTY  
OHIO



SCALE 1" = 50'

OCT. 14, 1977

*George H. Stewart*

REG. SURVEYOR 6357

MAP OFFICE COPY