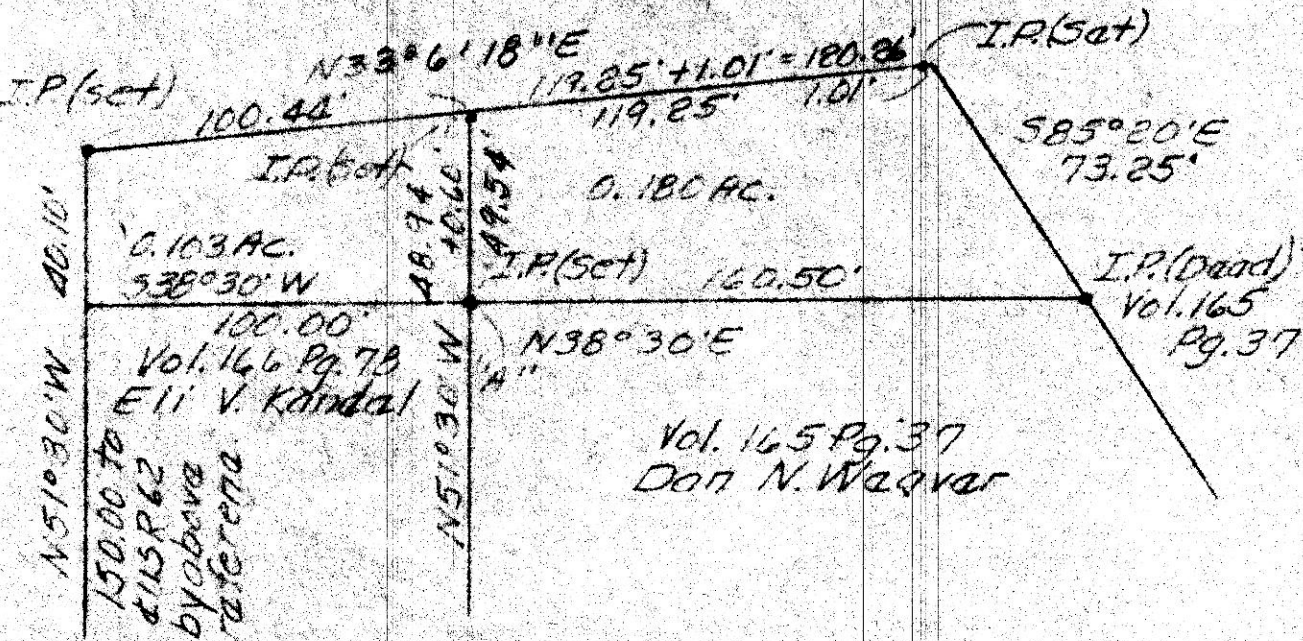
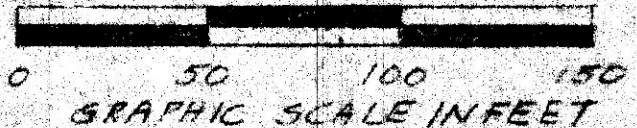


MAP OFFICE COPY



I.P. marked "A" is N74° 30' E 100.00', 583° E 264.00', N38° 30' E 529.5', and N51° 30' W 150.00' from the S.W. corner S.E. 1/4 S6 T9N R5W of Berlin TWP., Hol. Co., Ohio as per Vol. 165 Pg. 37.



112225

REC'D: September 29 1977
 AT 1:21 O'CLOCK P.M.
 RECORDED: Sept 29, 1977
 HES CO. Plat VOL. 8 PG. 20
 FEE: \$ 2.00

Richard ~~Yarn~~ RECORDER

Deed Vol. 199
 Pgs. 743-745



PLAT OF A SURVEY FOR
ELI V. KANDEL

- Grantee -
 Known as part of the S.E. 1/4
 of S6, T9N, R5W of Berlin
 TWP., Hol. Co., Ohio.
 Robert L. Kasner, P.S. 5193

8/29/77