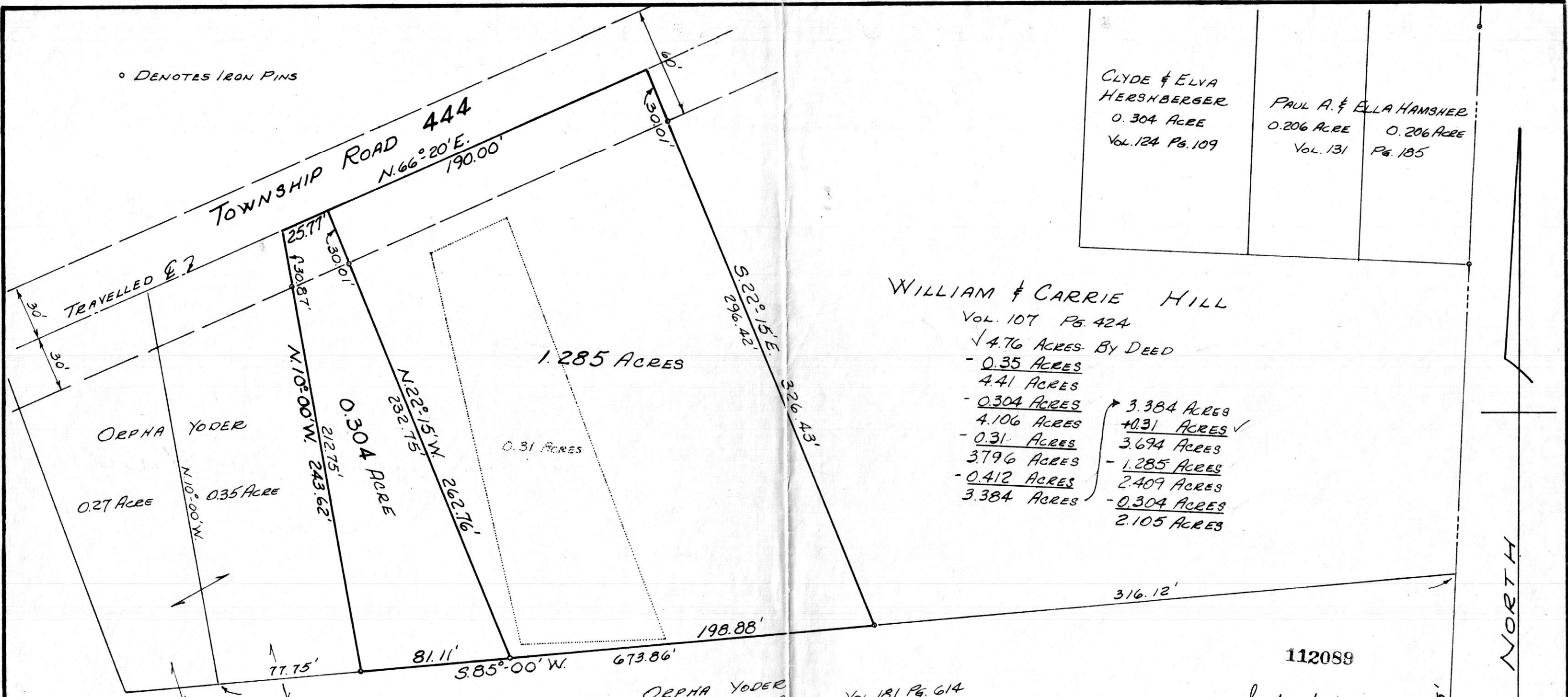


o DENOTES IRON PINS



CLYDE & ELVA HERSHBERGER 0.304 ACRE Vol. 124 Pg. 109	PAUL A. & ELLA HAMSHER 0.206 ACRE Vol. 131	0.206 ACRE Pg. 185
---	--	-----------------------

WILLIAM & CARRIE HILL

Vol. 107 Pg. 424
 ✓ 4.76 ACRES BY DEED
 - 0.35 ACRES
 4.41 ACRES
 - 0.304 ACRES
 4.106 ACRES
 - 0.31 ACRES
 3.796 ACRES
 - 0.412 ACRES
 3.384 ACRES
 3.384 ACRES
 + 0.31 ACRES ✓
 3.694 ACRES
 - 1.285 ACRES
 2.409 ACRES
 - 0.304 ACRES
 2.105 ACRES

ORPHA YODER
 TOTAL 13.66 ACRES Vol. 181 Pg. 614

NOTE:
 THE 0.31 ACRE TRACT WAS DEEDED TO WAYNE J. HOCHSTETLER BY WARRANTY DEED Vol. 136, Pg. 516 FROM WM. HILL. THE 0.31 ACRE TRACT IS TO BE DEEDED BACK TO WM. HILL PRIOR TO THE TRANSFER OF PROPERTY TO ANDREW MULLET.

BEING A PART OF THE SOUTHEAST QTR. OF THE NORTHWEST QTR. OF SECTION 20, TWP 9 (WALNUT CREEK), RANGE 5, COUNTY OF HOLMES, STATE OF OHIO.

PLAT OF SURVEY
 FOR
 WILLIAM & CARRIE HILL
 TO
 ORPHA YODER 0.304 ACRE
 ANDREW MULLET 1.285 ACRE

PREPARED BY:
 DONALD R. DUMMERMUTH
 REG. SURVEYOR # 5075

112089
 RECD: September 16, 1977
 AT 4:13 O'CLOCK P.M.
 RECORDED: September 19, 1977
 HOLMES CO. Plat Vol. 8 Pg. 62
 FEE: \$ 3.⁷⁴
 Richard Heaver RECORDER
 11X17X2
 Deed Vol. 99-Pg. 612, 610, 614
 SOUTHEAST CORNER OF THE
 NORTH WEST QTR. OF SECTION 20
 APPROVED BY
 THE HOLMES COUNTY HEALTH DEPARTMENT
 BY [Signature] D.W.S.
 DATE 9-15-77 Approved as rebuilding site.
 DATE: 26 AUGUST, 1977 SCALE: 1"=50'-0"

NORTH