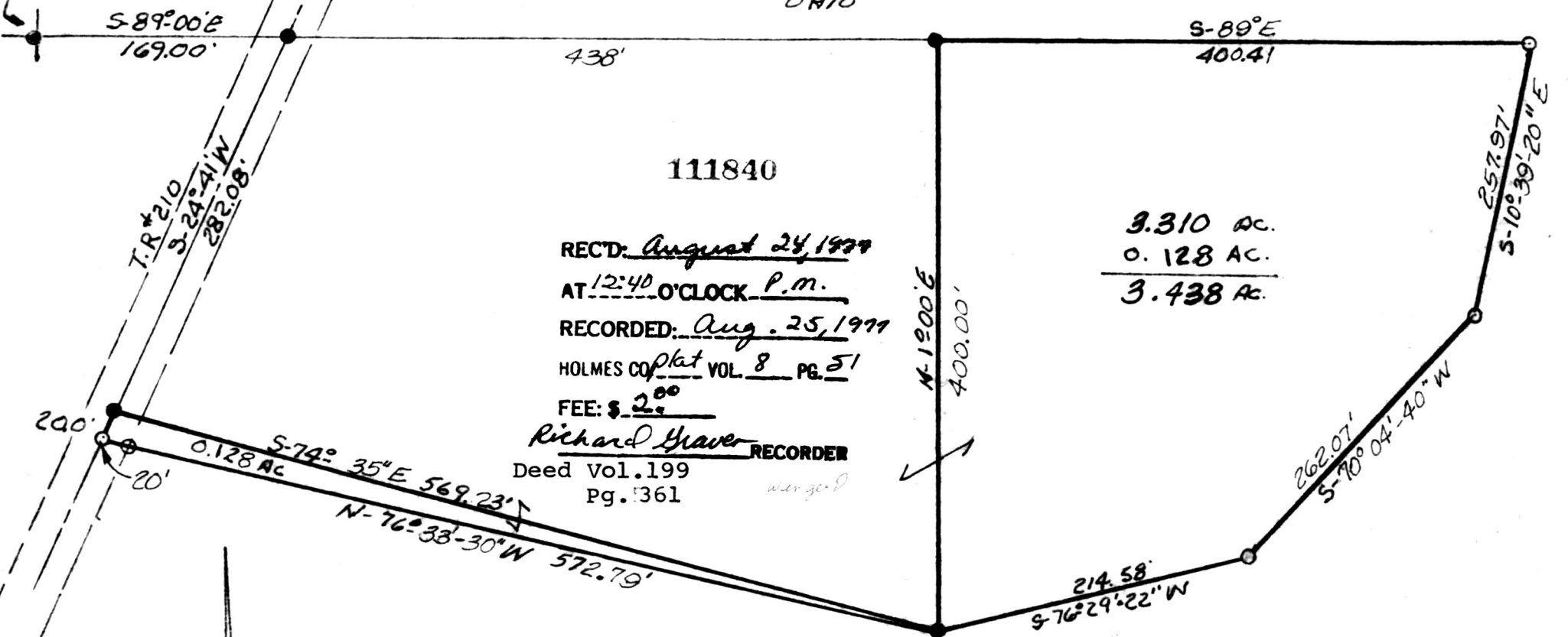


PAINT TOWNSHIP  
 PT. LOT #5 3<sup>4</sup> QTR. MILITARY LAND  
 TWP. 10 RANGES  
 HOLMES COUNTY  
 OHIO

JUNE 1977

N.W. COR.  
 LOT #5



111840

3.310 AC.  
 0.128 AC.  
 3.438 AC.

RECTD: August 24, 1977  
 AT 12:40 O'CLOCK P.M.  
 RECORDED: Aug. 25, 1977  
 HOLMES CO. plat VOL. 8 PG. 51  
 FEE: \$ 2.<sup>00</sup>

Richard Yeaver RECORDER  
 Deed Vol. 199 Pg. 361

200' 20'  
 S-74° 35' E 569.23'  
 0.128 AC.  
 N-76° 33'-30" W 572.79'

I CERTIFY THIS SURVEY TO BE CORRECT  
 TO THE BEST OF MY KNOWLEDGE.

APPROVED BY  
 THE HOLMES COUNTY HEALTH DEPARTMENT  
 BY [Signature]  
 DATE 7-21-1977 GWS.

Clyde E. Purdy  
 CLYDE PURDY R.S. #4900

APPROVED BY  
 THE HOLMES COUNTY HEALTH DEPARTMENT  
 BY 2 HOSPITAL DRIVE  
 MILLERSBURG, OHIO 44654  
 DATE 6 Sorry ↑

SCALE 1"=100  
 ○ I.P. SET  
 ● I.P. FOUND

MAP OFFICE COPY