

SE 1/4 of SW 1/4 S21 T9 N R5 W
 is Par. 2 of Tract 1 Vol. 186
 Pg. 801
 NE 1/4 of NW 1/4 S1 T8 N R5 W
 is Par. 3 of Tract 1 Vol. 186
 Pg. 801

0.352 AC SE 1/4
 of SW 1/4 S21
 T9 N R5 W &
 2.361 AC NE 1/4
 of NW 1/4 S1 T8 N
 R5 W

100786

REC'D May 19, 1977

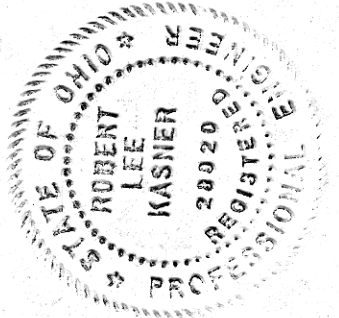
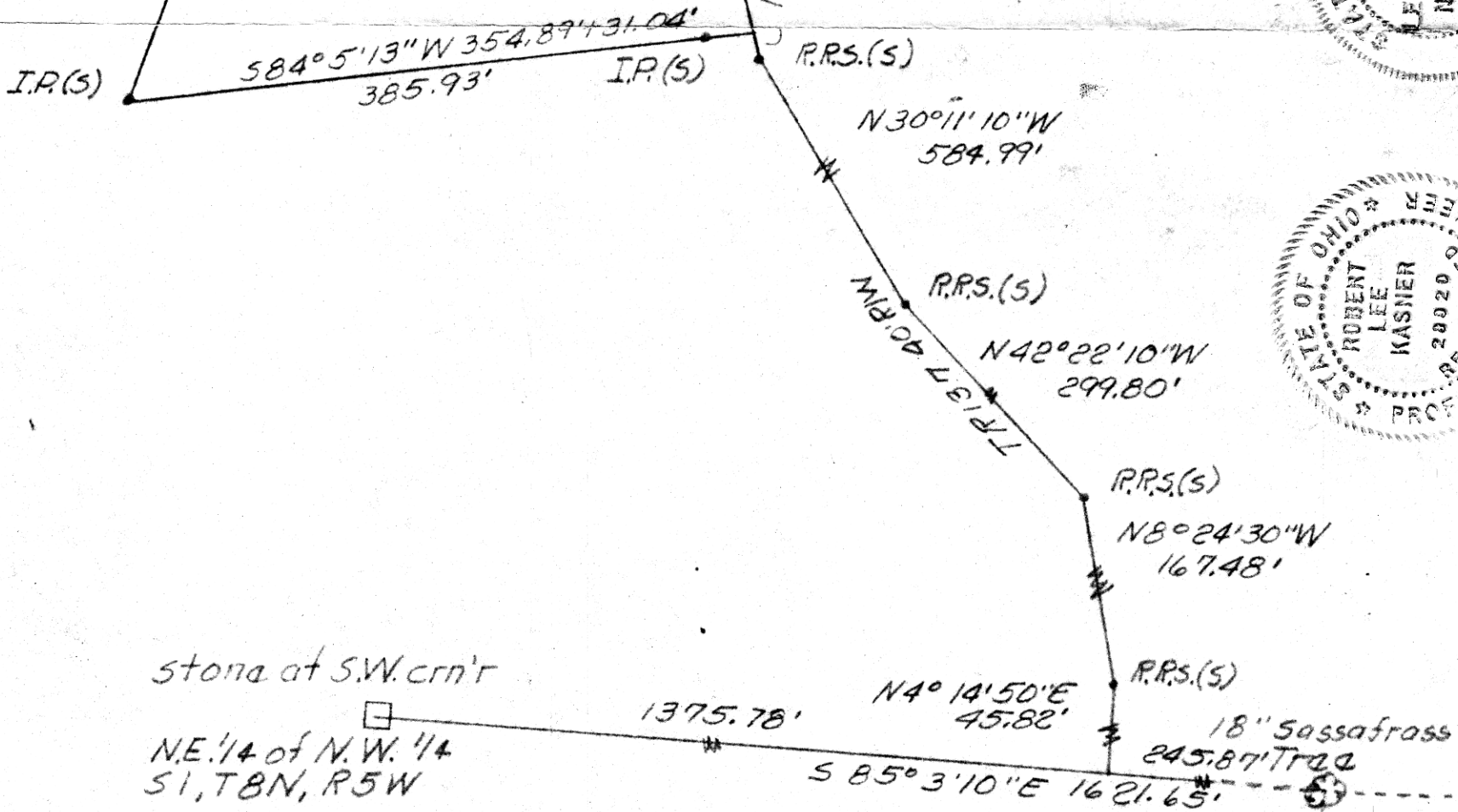
AT 2:58 O'CLOCK P.M.

RECORDED May 20, 1977

HOLMES CO. Plat. VOL. 7. PG. 812

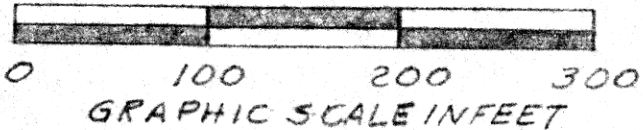
FEE: \$ 2.60

Richard Green RECORDER
 10 X 13 X 2



stone at S.W. cor'r

NE 1/4 of NW 1/4
 S1, T8 N, R5 W



PLAT OF A SURVEY FOR
RALPH L. KING
 — Grantee —

Known as part of the SE 1/4 of SW 1/4 of
 S21, T9 N, R5 W and NE 1/4 of NW 1/4 of
 S1, T8 N, R5 W of Walnutcreek Twp,
 Hol. Co. Ohio

5/6/77

MAP OFFICE COPY