

PAINT TOWNSHIP
 PT. LOT # 19
 TWP. 10 RANGE 4
 3rd QTR.
 HOLMES COUNTY
 OHIO

JULY 1976

109508

NOTE: LOT LINE WAS
 ESTABLISHED BY EXTENDING
 LOT LINE FROM THE SOUTH.

I.P. SET 2' SOUTH OF CORNER
 ON LINE

REC'D: December 8, 1976
 AT 2:34 O'CLOCK P.M.
 RECORDED: Dec. 9, 1976
 HOLMES CO. Plat VOL. 7 PG. 242
 FEE: \$2.00

Richard Heaven RECORDER
 Deed Vol. 196 Page 626

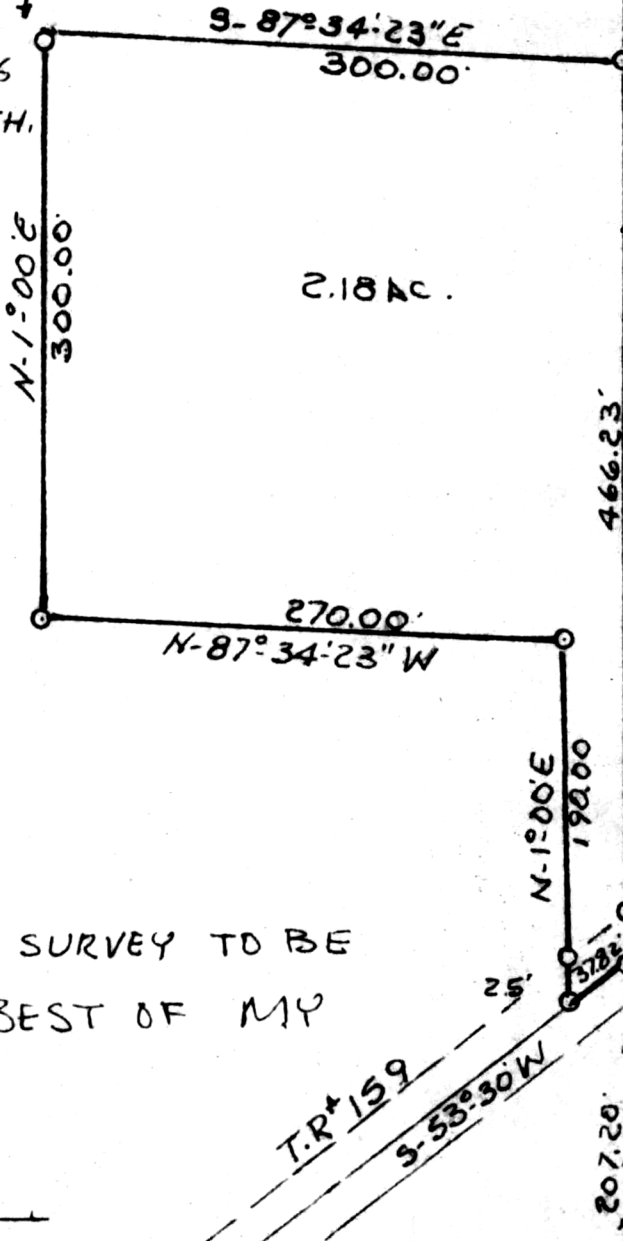


SCALE 1"=100'

O IRON PIN SET

I CERTIFY THIS SURVEY TO BE
 CORRECT TO THE BEST OF MY
 KNOWLEDGE.

Clyde E. Purdy
 CLYDE E. PURDY RS #4900



NO EVIDENCE OF LOT LINE

MAP OFFICE COPY