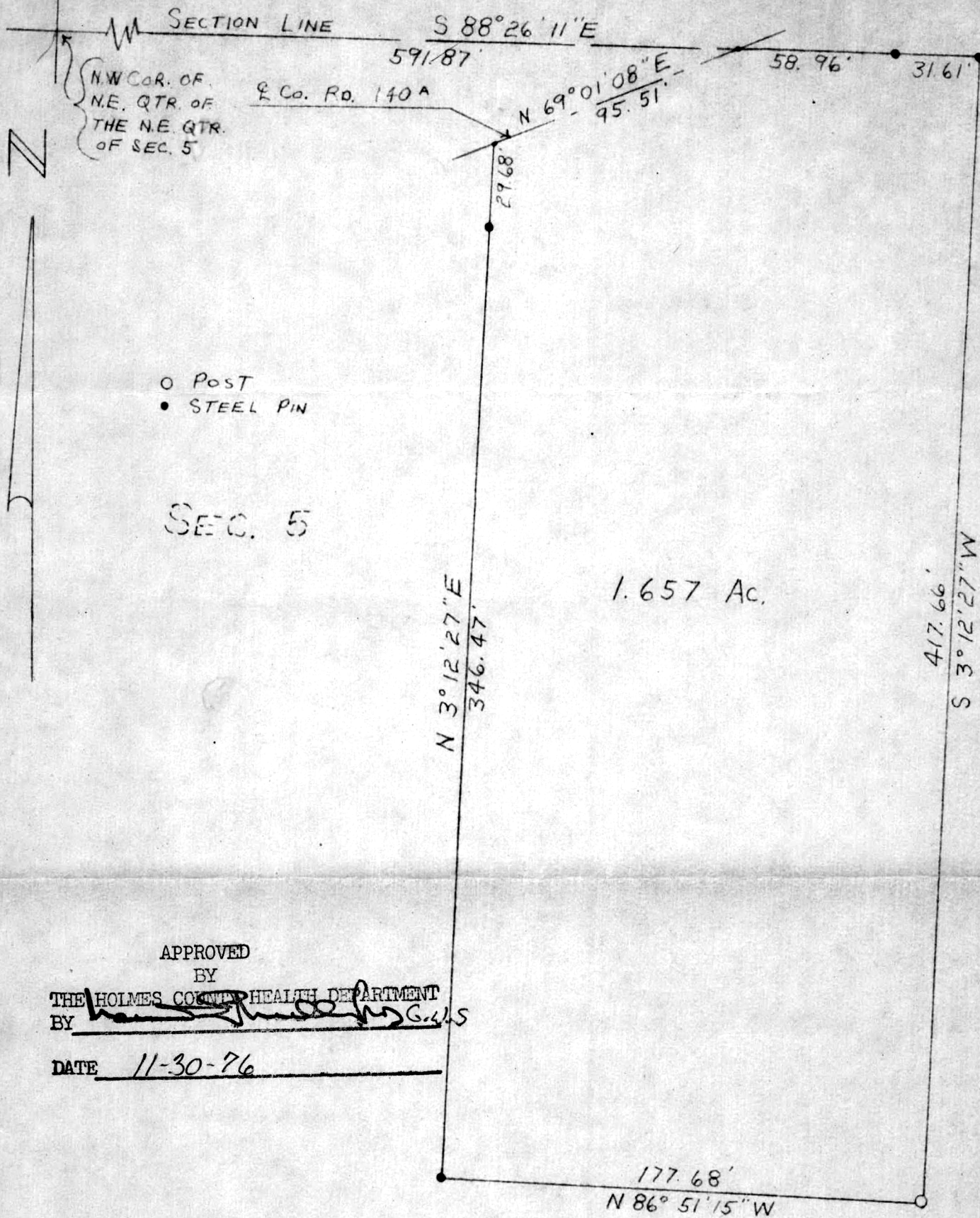


SEC. 25



○ Post  
 ● STEEL PIN

SEC. 5

1.657 Ac.

APPROVED  
 BY  
 THE HOLMES COUNTY HEALTH DEPARTMENT  
 BY [Signature] G.S.

DATE 11-30-76

Plat of a Tract of Land  
 in  
 Northeast Quarter, Section 5  
 Range 4W, Township 8N  
 Walnut Creek Township  
 Holmes County  
 Ohio

109427 Scale: 1" = 50' October 6, 1976  
G. J. Stewart Reg. Surveyor #414

REC'D: November 30, 1976

AT 3:51 O'CLOCK P.M.

RECORDED: December 1, 1976

HOLMES CO. Plat VOL. 7 PG. 137

FEE: \$2.<sup>00</sup>

Richard Gray RECORDER  
 Deed Vol. 196 Page 538