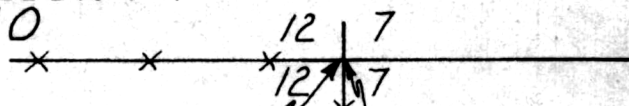


PRAIRIE TOWNSHIP  
 S.E. QTR., SEC. 12  
 T-13 N., R-13 W.  
 HOLMES COUNTY  
 OHIO



N.E. Cor.  
 S.E. Qtr.  
 Sec. 12

APPROVED  
 BY

THE HOLMES COUNTY HEALTH DEPARTMENT

BY [Signature]

DATE 10/19/76

109048

REC'D: October 19-1976

AT 4:13 O'CLOCK P.M.

RECORDED: October 20, 1976

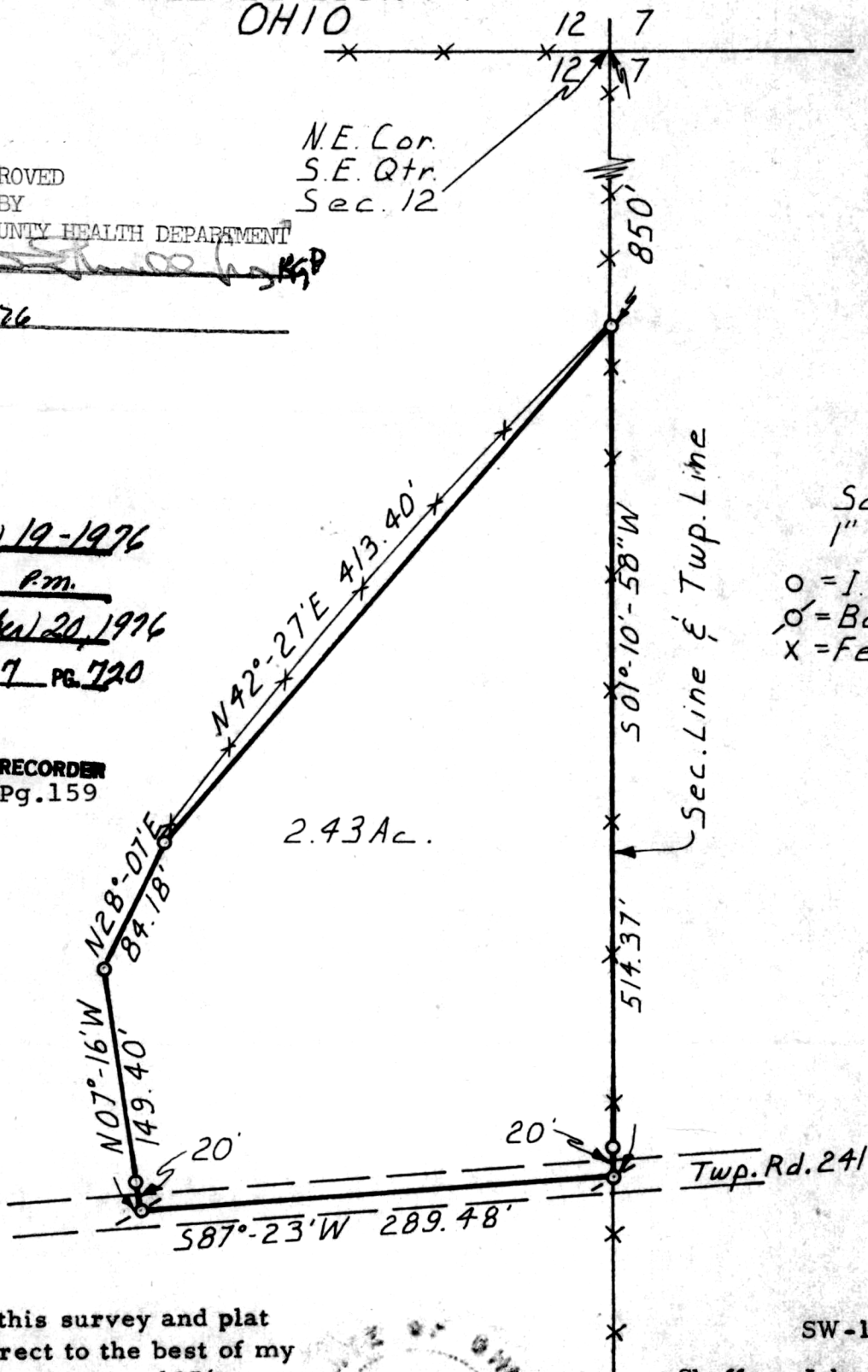
HOLMES CO. Plat VOL 7 PG. 720

FEE: \$ 2.00

Richard Graun RECORDER

Deed Vol. 196- Pg. 159

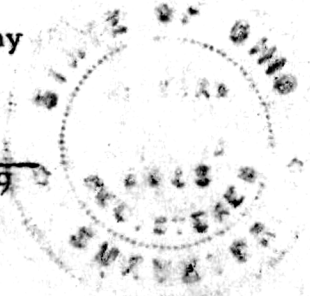
*JOHN WOLFMAN*



Scale  
 1" = 100'  
 O = I.P. Set  
 O with cross = Boat Spike Set  
 X = Fence Line

I certify this survey and plat  
 to be correct to the best of my  
 knowledge, August, 1976.

Richard J. McDaid  
 Richard J. McDaid R. S. 5009



SW-1728

Shaffer, Johnston, Lichtenwalter  
 & Associates

Wooster

Ohio