

CORNER POST FOUND

NORTH



NORTH LINE OF N.W. QTR., SECTION 31

108691

RECT. Sept. 8 - 1976

AT 2:35 O'CLOCK P.M.

RECORDED: Sept. 9 - 1976

HOLMES CO. Plat VOL. 7 PG. 699

FEE: \$ 2.00

Richard Gray RECORDER

MARJORIE R. KASER

Deed Vol. 195 Pg. 532

SCALE: 1"=100'

IRON PIN SET

208.71' N-89°15'00"-E

IRON PIN SET

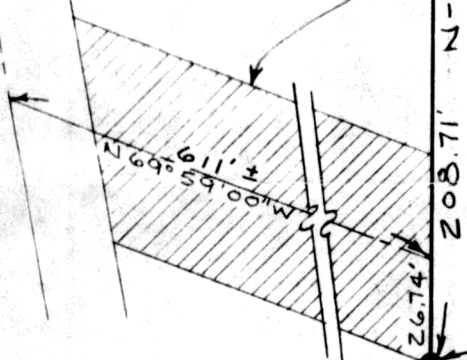
E TWP. HIGHWAY NO. 331

50' DRIVEWAY ACCESS EASEMENT

1.000 ACRES

208.71' S-0°45'00"-E

BEATRICE CRANE



IRON PIN SET

208.71' S-89°15'00"-W

IRON PIN SET

APPROVED

BY

THE HOLMES COUNTY HEALTH DEPARTMENT

BY [Signature] KGP

DATE 9/8/76

Charles D. Miller
REGISTERED SURVEYOR NO. 5691

PREPARED BY:
GRINDLE & BENDER
ARCHITECTURE,
ENGINEERING,
SURVEYING
ASHLAND, O 9-2-76

PLAT OF SURVEY FOR
MARJORIE R. KASER
PRAIRIE TWP., HOLMES CO., O.
PT. OF NW. QTR., SEC. 31, T-14, R-13

MAP OFFICE COPY