

107870

BERLIN TOWNSHIP
N.E. CORNER OF THE SOUTH
HALF OF LOT NO. 13
1ST. QTR. U.S. MILITARY LAND
TWP. 9 RANGE 5 6
HOLMES COUNTY
OHIO

RECT: June 21, 1976

AT 11:06 O'CLOCK A.M.

RECORDED: June 21, 1976

HOLMES CO. Vol. 7 PG. 633

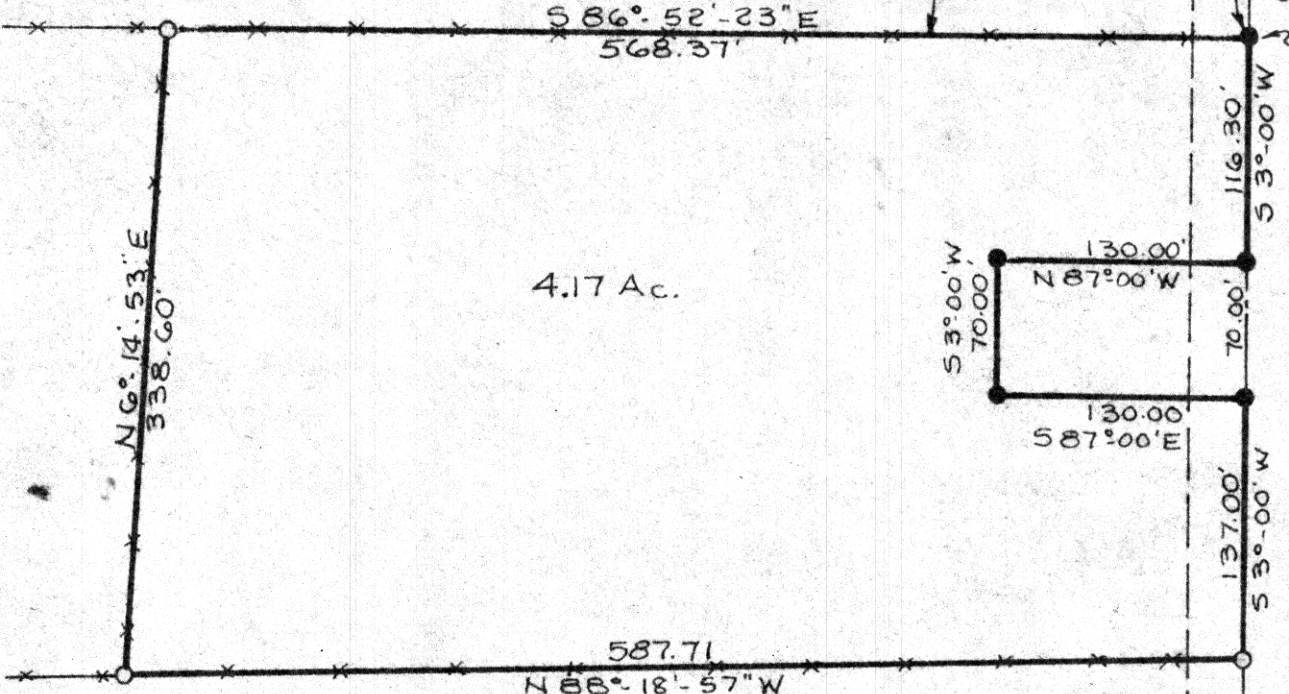
FEE: \$ 2.00

Richard Mauer RECORDER

Deed: Vol. 194 Pg. 464

NORTH LINE OF SOUTH
ONE HALF OF LOT # 13

N.E. CORNER OF
S. HALF LOT # 13



JUNE 1976

I CERTIFY THIS SURVEY TO BE CORRECT
TO THE BEST OF MY KNOWLEDGE.

Clyde E. Purdy
CLYDE E. PURDY R.S.#4900

SCALE: 1" = 100'

○ I.P. SET

● I.P. FOUND

MAP OFFICE COPY