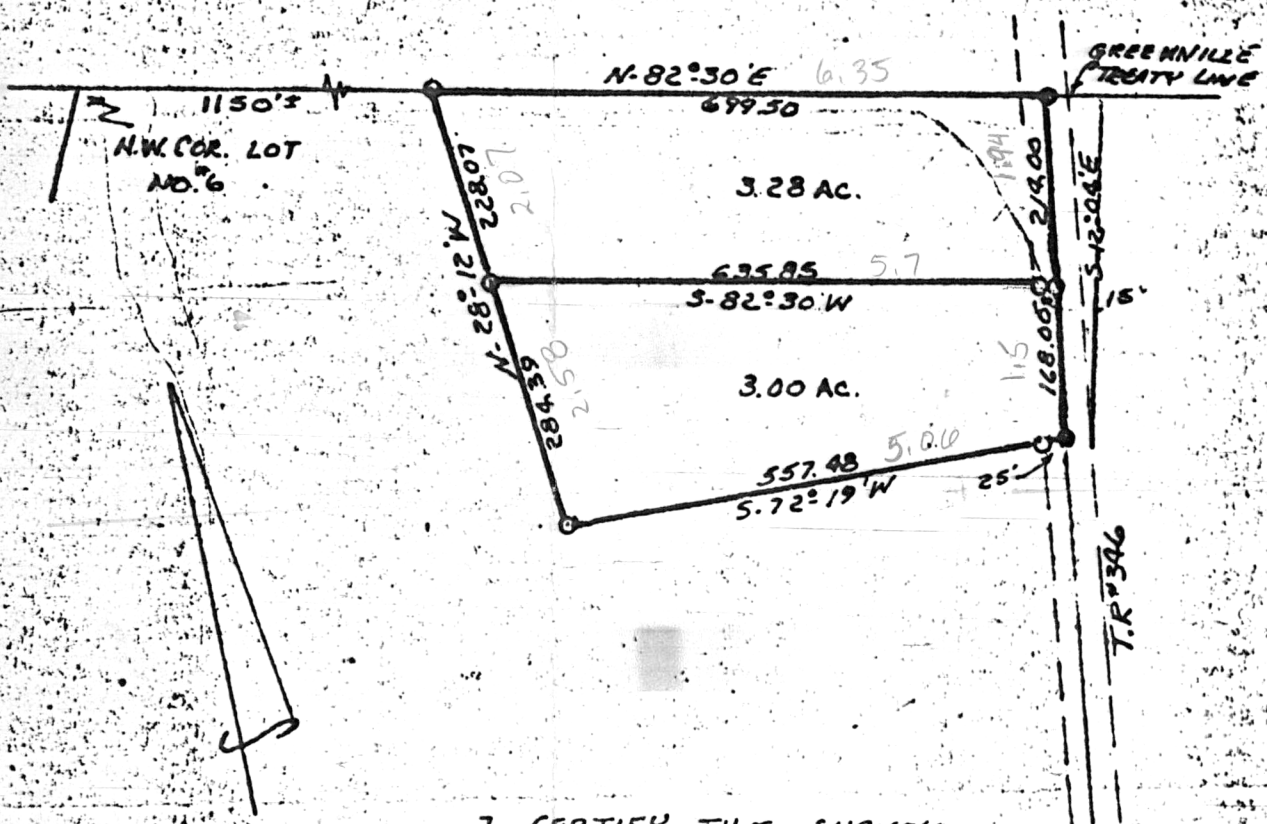


PRAIRIE TOWNSHIP
 P.T. LOT NO. 6
 TWP. 10 RANGE 7
 HOLMES COUNTY
 OHIO
 OCT. 1975



SCALE 1"=200'

● I.P. FOUND
 ○ I.P. SET

I CERTIFY THIS SURVEY

TO BE CORRECT TO THE BEST
 OF MY KNOWLEDGE.

107267

Clyde E. Purdy
 CLYDE E. PURDY R.S. #4900

REC'D: *April 9, 1976*
 AT 3:27 O'CLOCK *P.M.*
 RECORDED: *April 12, 1976*
 HOLMES COUNTY VOL. 7 P. 295
 FEE: \$ 2.00

Richard Graven
 RECORDER

Deed: Vol. 193 Pgs. 668 & 670
 Original Plat Filed With Map Office.
 Richard Graven, Recorder

MAP OFFICE COPY