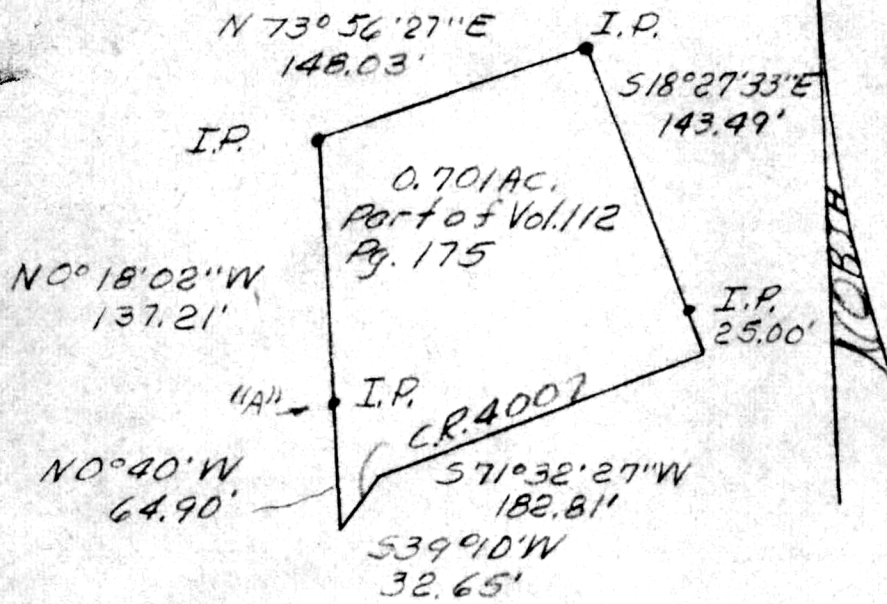


Point "A" is N3°30'E 250.00' &  
 S86°30'E 548.00' as per P.B. 3  
 Pg. 95 from S.W. corner Lot 1,  
 4th 1/4, T9N, 9 R8W.



Scale: 1" = 100'

PLAT OF A SURVEY FOR  
 TOM HANNA  
 Grantee  
 Lot 1, 4 1/4, T9N, 9 R8W, of  
 Monroe Twp. Hol. Co., Ohio  
 Robert L. Kasner P.S. 5193

107131

INDEXED



REC'D: March 26, 1976  
 AT: 1:54 O'CLOCK P.M.  
 RECORDED: March 29, 1976  
 HOLMES CO. Plat VOL. 7 PG. 588  
 FEE: \$2.00  
Richard Shaven RECORDER  
 (Gal)

6  
**MAP OFFICE COPY**

Deed: Vol. 193 Pgs. 489