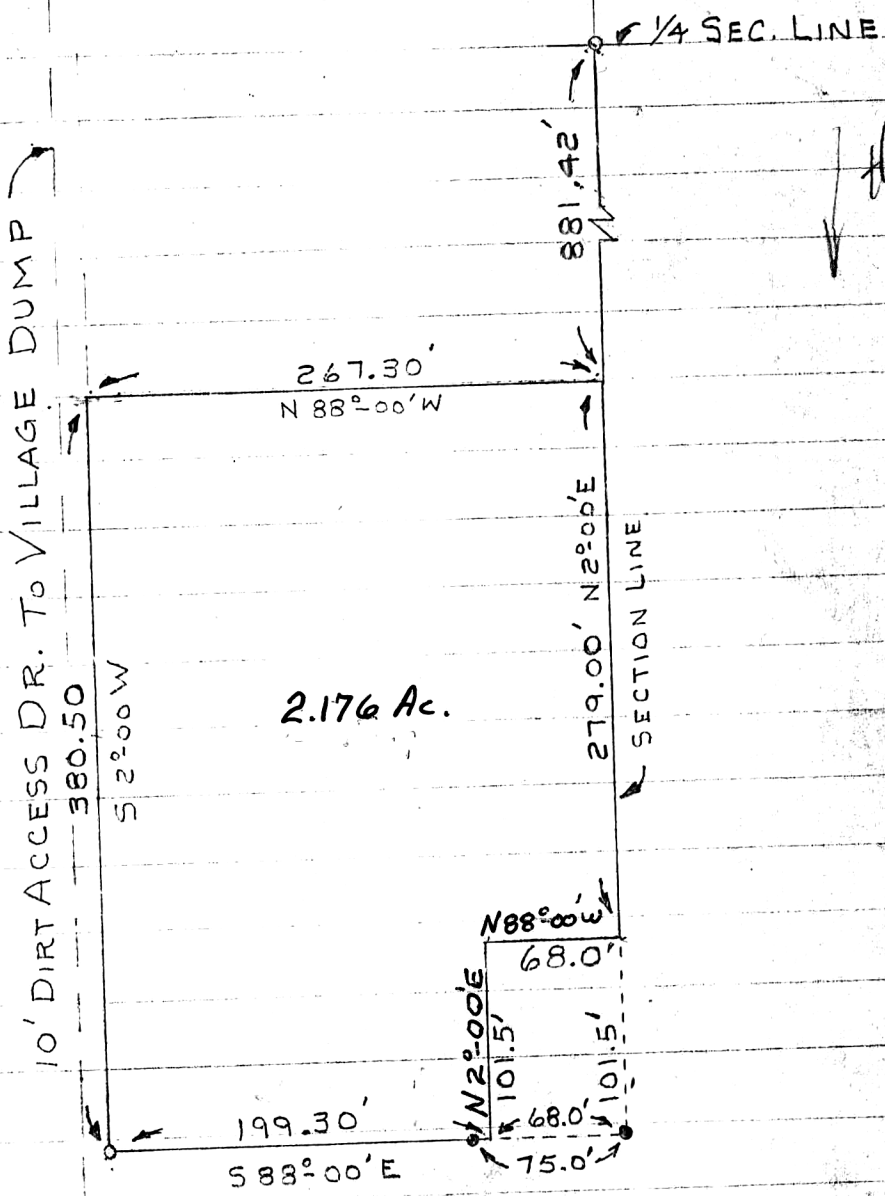


NE COR. OF
SE QTR. SEC. 26
WASHINGTON TWP. 40" MAPLE N.E. 3.0'



o I.P. SET
• I.P. Fd.
SCALE 1" = 100'

Plat approved although signer is not the author herein signed.

Robert L. Kasner P.S. 5193
Holmes Co. Engr.
BY: DICK SPRANG

106987 INDEXED

1-20-75

REC'D March 9, 1976
AT 4:11 O'CLOCK P.M.
RECORDED March 10, 1976
HOLMES CO. VOL. 7 PG. 580
FEE: \$ 2.00

RECORDER
Deed: Vol. 193 Pg. 345

MAP OFFICE COPY