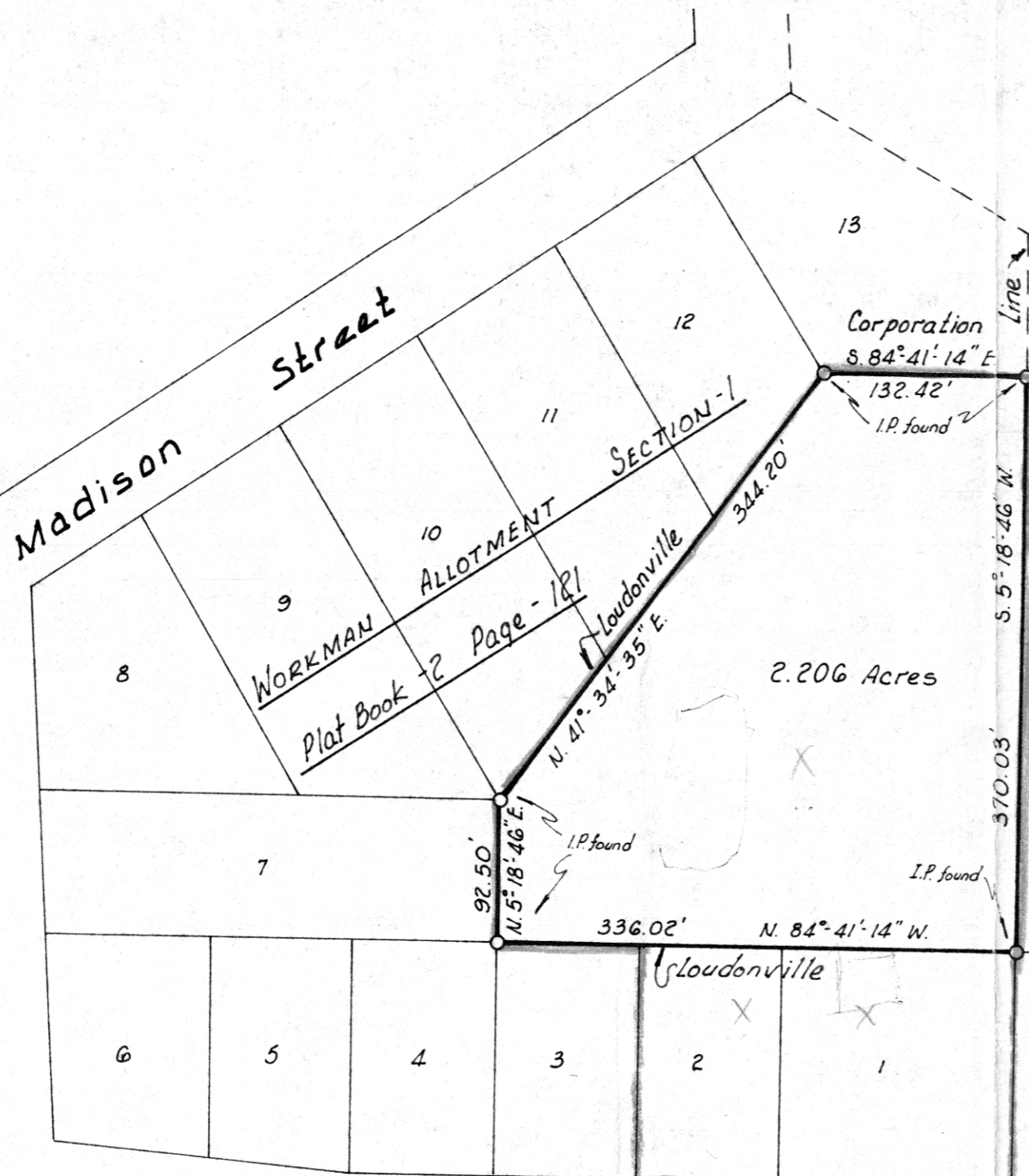




ASHLAND Co. HANOVER TWP. SEC-1  
HOLMES Co. WASHINGTON TWP. SEC-6



Loudonville Industrial Development Corp.

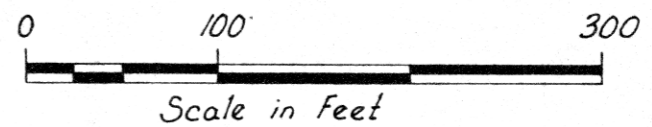
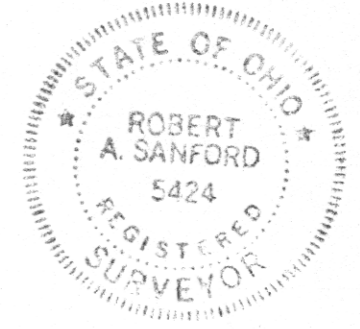
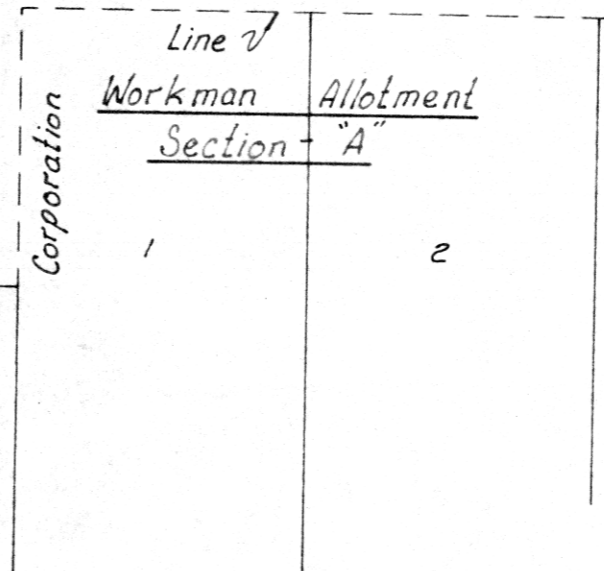
INDEXED 106928  
REC'D: March 2, 1976  
AT 10:14 O'CLOCK A.M.  
RECORDED: March 2, 1976  
HOLMES CO. Plat VOL. 7 PG. 525  
FEE: \$ 3.20  
Richard Brown RECORDER  
16x10 (pl)

APPROVED BY  
TAX MAP OFFICE  
Date 2-26-76 9M

I, Robert A. Sanford, P.S., hereby certify that this plat was made by me using the subdivision plat Workman Allotment Section-1 as recorded in Plat Book - 2 Page - 121 Holmes Co. records.  
Deed Vol. 193 Pg. 290

Date 9/22/75  
Robert A. Sanford P.S. #5424  
Robert A. Sanford, P.S., Reg. Sur. No. 5424

2.206 Acres



State Route - 39

Received \_\_\_\_\_ 1975  
Recorded \_\_\_\_\_ 1975  
Plat Book \_\_\_\_\_ Page \_\_\_\_\_  
Holmes County Survey Records  
Fee Paid \_\_\_\_\_

MAP OFFICE COPY

Holmes County Recorder

Survey Plat Map Washington Twp. NW 1/4 Sec-6 T-19N, R-15W, Holmes County, Ohio		
SCALE: 1" = 100'	APPROVED BY:	DRAWN BY R.A.S.
DATE: Sept. 18, 1975		REVISED
Plat & Description Made At Request Of Ross Snyder		
Sanford & Schneider, Surveyor Ashland, Ohio		DRAWING NUMBER <b>162</b>