

106481

REC'D. Dec. 23, 1975

AT 11:22 O'CLOCK a.m.

RECORDED Dec. 23, 1975

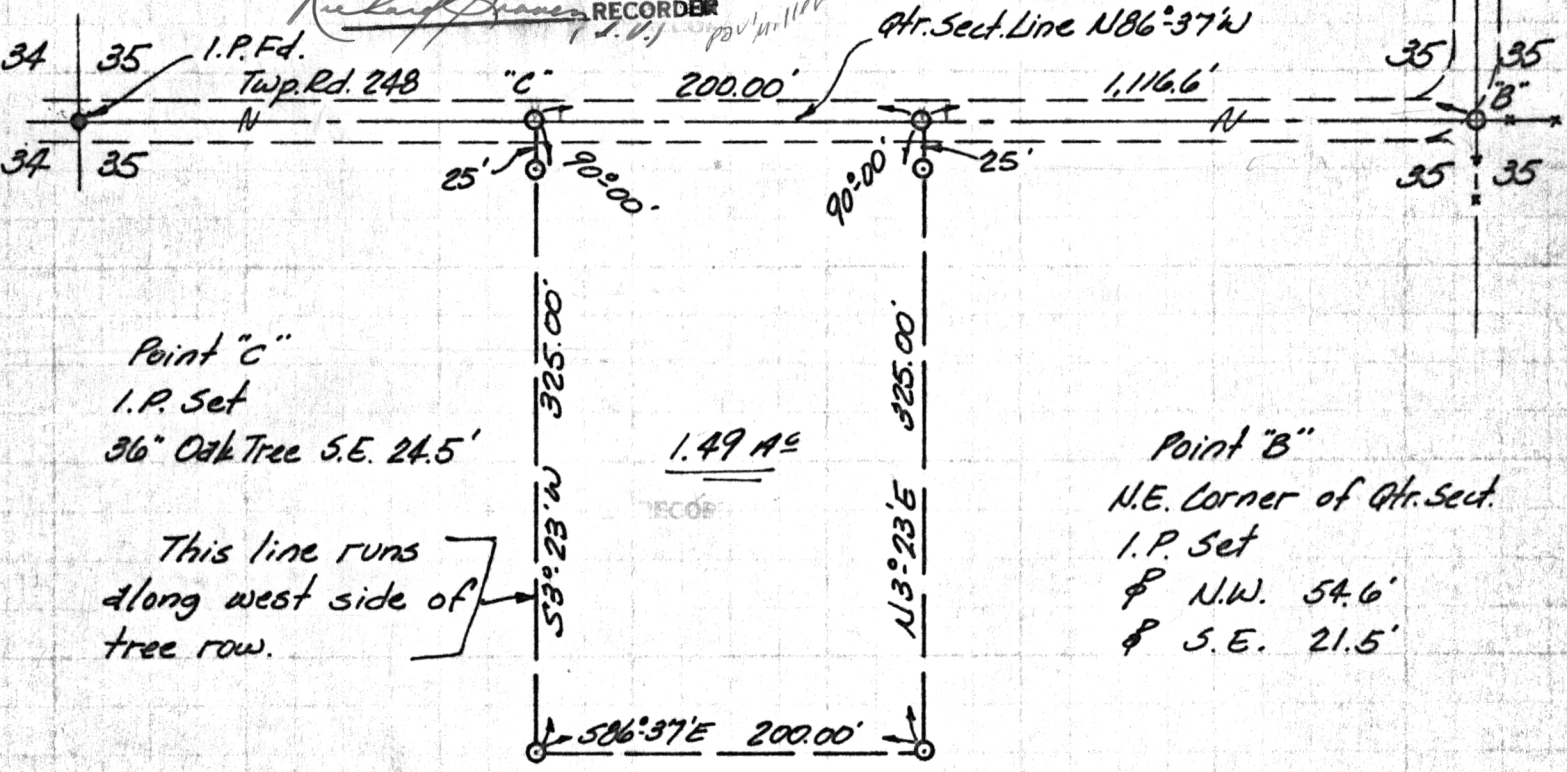
HOLMES CO. VOL. 7 PG. 557

FEE: \$ 2.00

INDEXED

Deed Vol. 192-Pg. 639

*Richard Kramer* RECORDER



Point "C"  
 I.P. Set  
 36" Oak Tree S.E. 24.5'

This line runs  
 along west side of  
 tree row.

Point "B"  
 N.E. Corner of Qtr. Sect.  
 I.P. Set  
 & N.W. 54.6'  
 & S.E. 21.5'

Survey for:  
 Harry D. Hostetter &  
 Harry D. Hostetter Jr.

November 1, 1975

S.W. QUARTER  
 SECTION 35  
 PRAIRIE TWP.  
 T-14 ; R-13  
 HOLMES COUNTY  
 OHIO



I certify this survey to be  
 correct to the best of my knowledge.

*George C. Mullet*

Reg. Sur #5796

Scale: 1" = 100'

○ - Iron Pin Set

GEORGE C. MULLET  
 Engineer & Land Surveyor  
 4432 WILSON DRIVE  
 WOOSTER, OHIO 44691

MAP OFFICE COPY