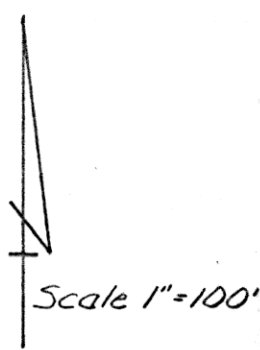


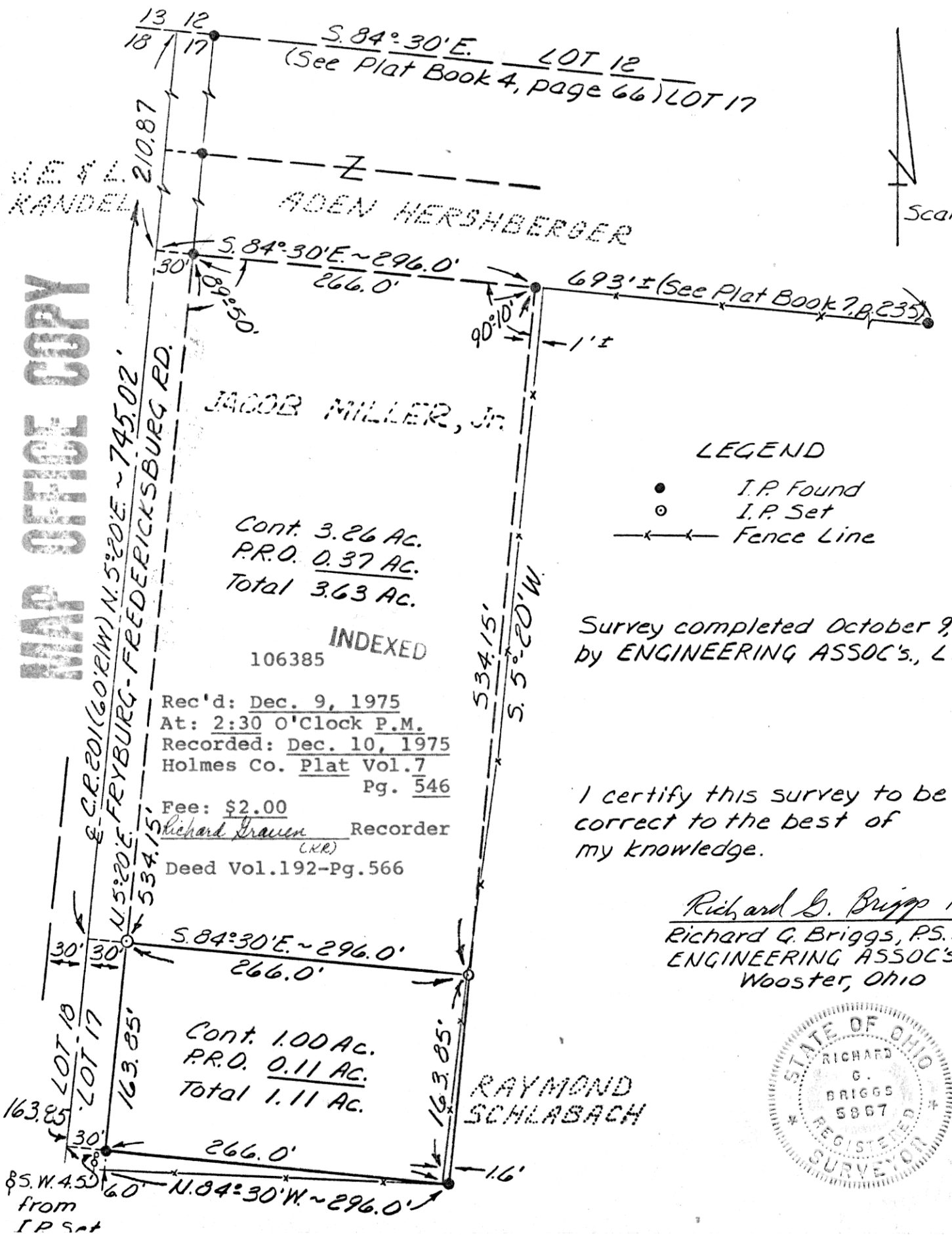
SURVEY PLAT

SITUATED IN LOT 17 OF 1st QTR. TWP., T-9-N., R-6-W., BERLIN TOWNSHIP
HOLMES COUNTY, OHIO

NE 1/4
KANDEL



MAP OFFICE COPY



Cont. 3.26 AC.
P.R.O. 0.37 AC.
Total 3.63 AC.

INDEXED
106385

Rec'd: Dec. 9, 1975
At: 2:30 O'Clock P.M.
Recorded: Dec. 10, 1975
Holmes Co. Plat Vol. 7
Pg. 546
Fee: \$2.00
Richard Trauer Recorder
(C.R.R.)
Deed Vol. 192-Pg. 566

Cont. 1.00 AC.
P.R.O. 0.11 AC.
Total 1.11 AC.

RAYMOND
SCHLABACH

LEGEND

- I.P. Found
- I.P. Set
- x—x— Fence Line

Survey completed October 9, 1975
by ENGINEERING ASSOC'S., LTD.

I certify this survey to be
correct to the best of
my knowledge.

Richard G. Briggs 10/17/75
Richard G. Briggs, P.S. 5867
ENGINEERING ASSOC'S., LTD.
Wooster, Ohio

