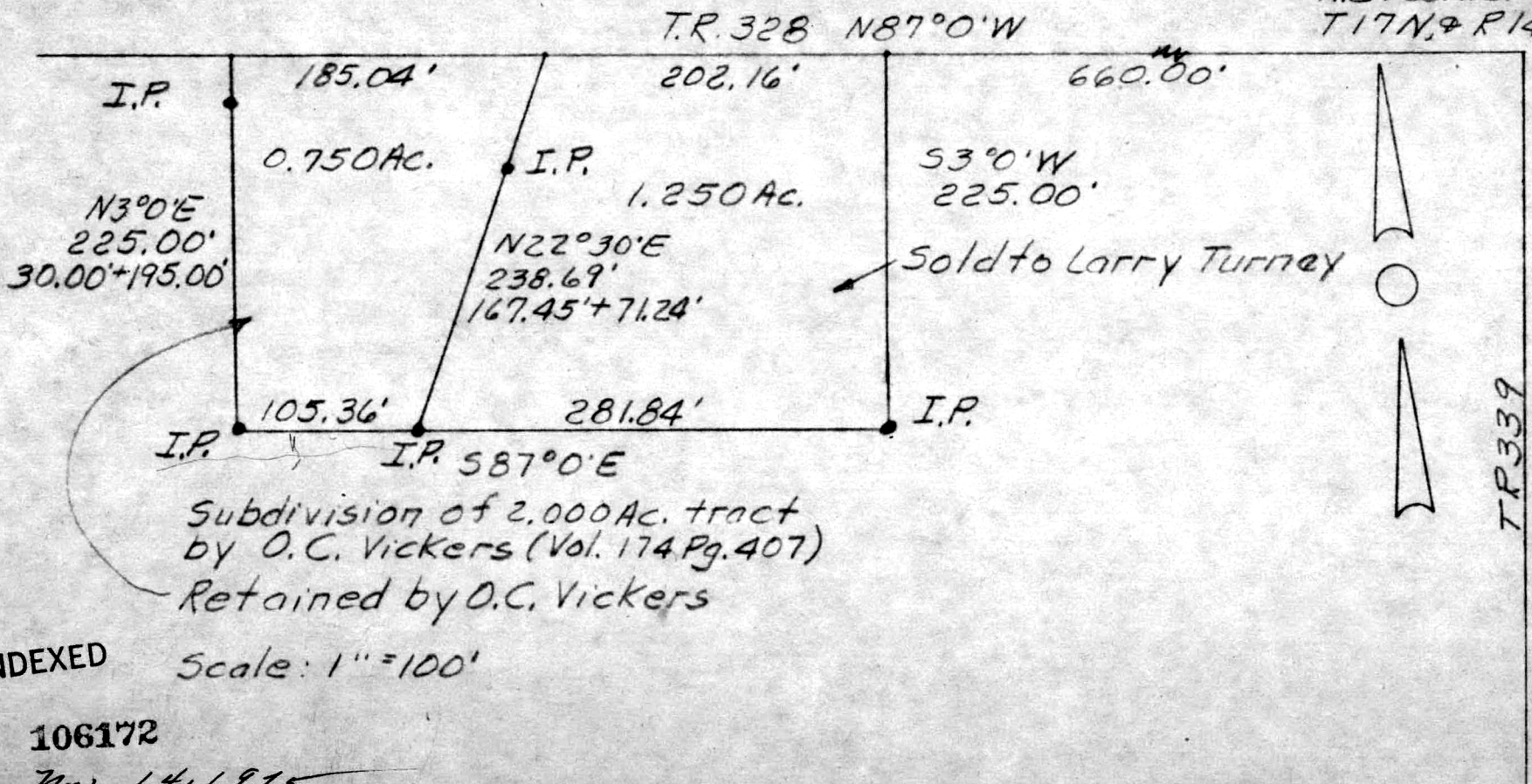


NE. corner S2,
T17N, R14W



Subdivision of 2.000 Ac. tract
by O.C. Vickers (Vol. 174 Pg. 407)
Retained by O.C. Vickers

T.R. 339

INDEXED

Scale: 1" = 100'

106172

REC'D: Nov. 14, 1975

AT 2:09 O'CLOCK P.M.

RECORDED: Nov. 17, 1975

HOLMES CO. PLAT VOL. 7 PG. 529

FEE: \$ 2.00

Robert L. Kasner RECORDER
(P.O.)



PLAT OF A SURVEY FOR
O.C. VICKERS
Grantor
S2, T17N, R14W of Ripley
Twp., Hol. Co. & State of Ohio.
Robert L. Kasner P.S. 5193

MAP OFFICE COPY

10/28/75