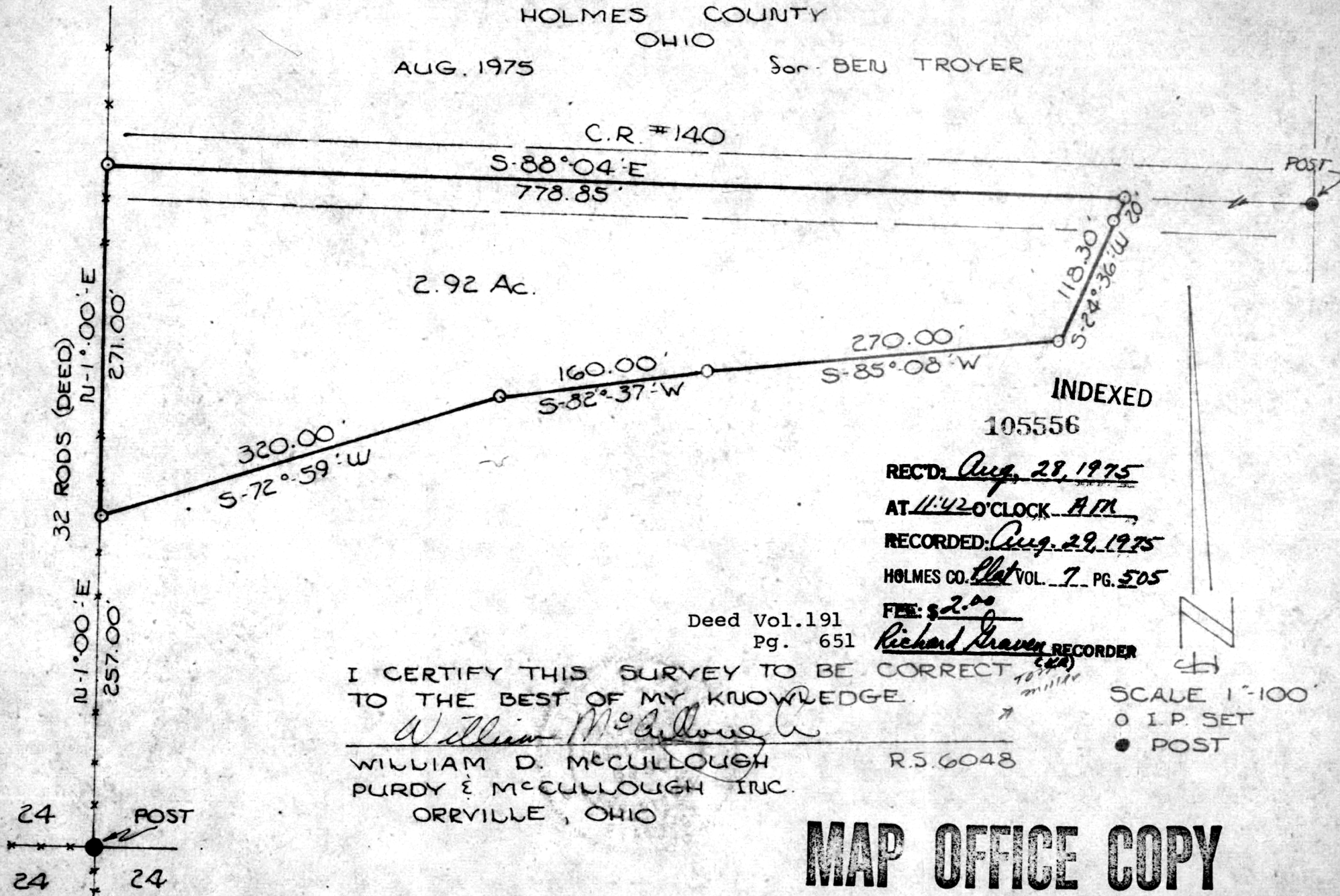


WALNUT CREEK TOWNSHIP
 N.E. QTR. SEC. - 24
 TWP. - 9 RANGE - 4
 HOLMES COUNTY
 OHIO

AUG. 1975

Sur. BEN TROYER



2.92 Ac.

C.R. #140

S-88°-04'-E
 778.85'

320.00'
 S-72°-59'-W

160.00'
 S-82°-37'-W

270.00'
 S-85°-08'-W

118.30'
 S-24°-36'-W

INDEXED
 105556

RECTD: Aug. 28, 1975
 AT 11:42 O'CLOCK AM
 RECORDED: Aug. 29, 1975
 HOLMES CO. Plat VOL. 7 PG. 505

Deed Vol. 191
 Pg. 651

FEE: \$2.00
Richard Traver RECORDER

I CERTIFY THIS SURVEY TO BE CORRECT
 TO THE BEST OF MY KNOWLEDGE.

William McCullough
 WILLIAM D. McCULLOUGH
 PURDY & McCULLOUGH INC.
 ORRYVILLE, OHIO

R.S. 6048

SCALE 1"=100'
 0 I.P. SET
 ● POST

MAP OFFICE COPY