

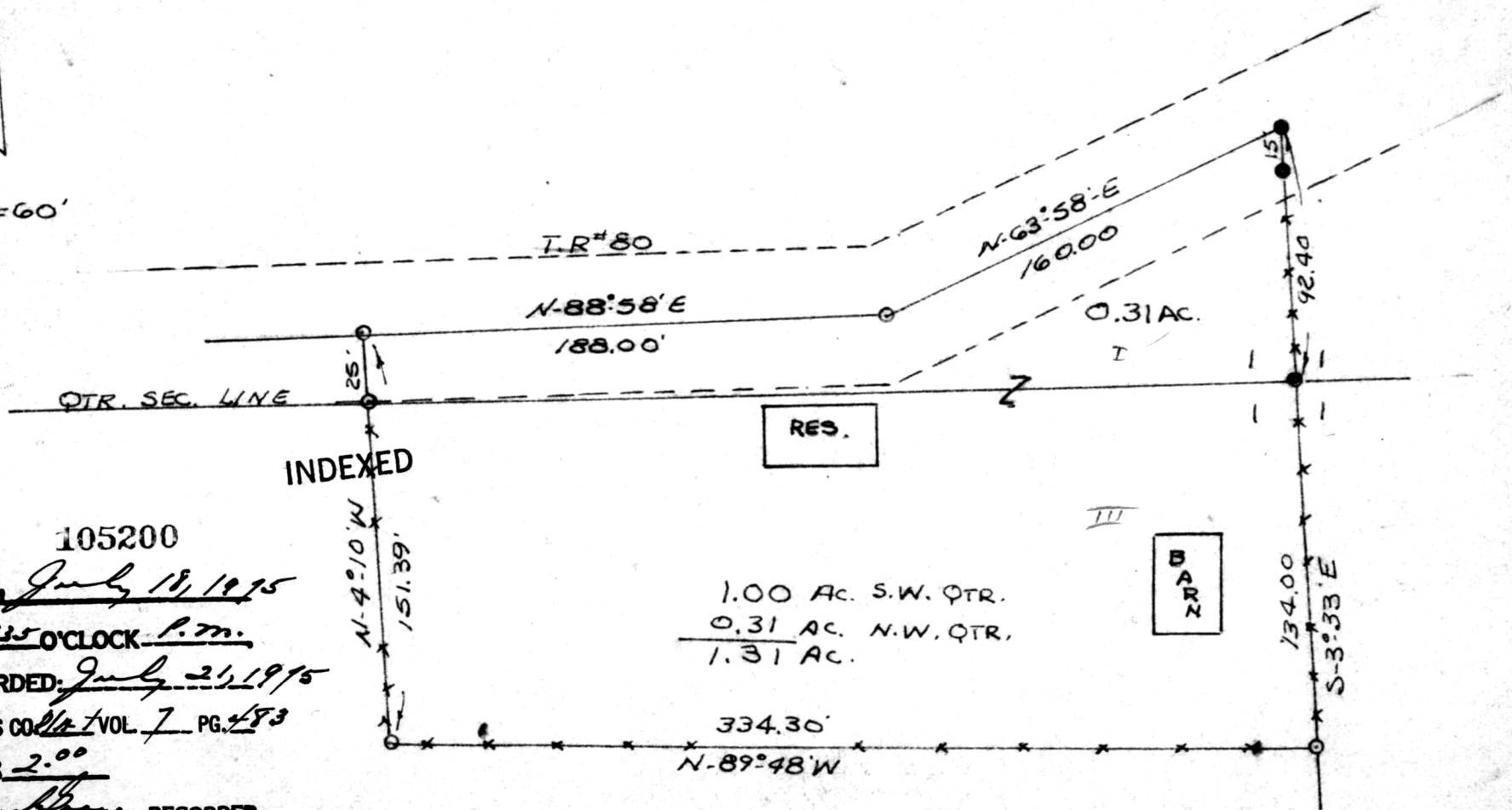
JUNE 1975

MECHANIC TOWNSHIP  
N.W. & S.W. QTR. SEC. 1  
TWP. 8 RANGE 7  
HOLMES COUNTY  
OHIO

SURVEY MERLE HOOD



SCALE 1"=60'



105200  
 RECD: July 18, 1975  
 AT 4:35 O'CLOCK P.M.  
 RECORDED: July 23, 1975  
 HOLMES CO. VOL. 7 PG. 483  
 FEE: \$ 2.00

1.00 AC. S.W. QTR.  
 0.31 AC. N.W. QTR.  
 1.31 AC.

Richard J. Purdy RECORDER  
 (P.V.)

Deed Vol. 191 Page 305

I CERTIFY THIS SURVEY TO BE CORRECT  
 TO THE BEST OF MY KNOWLEDGE.

MAP OFFICE COPY

Clyde E. Purdy  
 CLYDE E. PURDY R.S. 4900