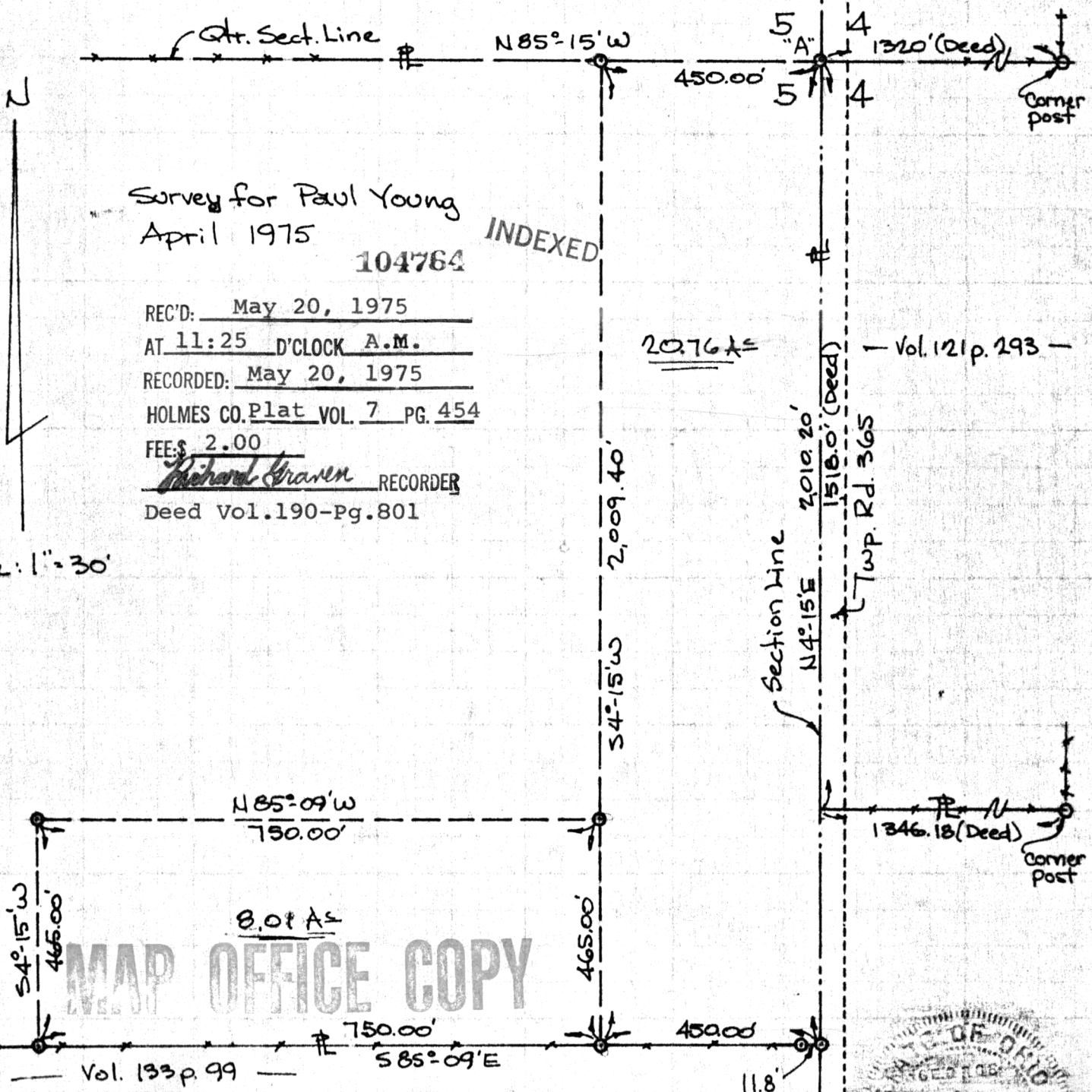


S.E. QUARTER  
SECTION 5  
RIPLEY TOWNSHIP  
T-17, R-14  
HOLMES COUNTY  
OHIO

Pt. "A" - Qtr. Sect. Corner  
I.P. Set  
30" Maple N.E. 22.8'  
15" Hickory N. 98.3'  
8" W. Cherry S.E. 2.2'



Survey for Paul Young  
April 1975

104764

INDEXED

REC'D: May 20, 1975

AT 11:25 D'CLOCK A.M.

RECORDED: May 20, 1975

HOLMES CO. Plat VOL. 7 PG. 454

FEE: \$ 2.00

Richard Kraven RECORDER

Deed Vol. 190-Pg. 801

20.76 AS

Vol. 121 p. 293

Section line  
N4°-15'E  
2010.20'  
1518.0' (Deed)  
Twp. Rd. 365

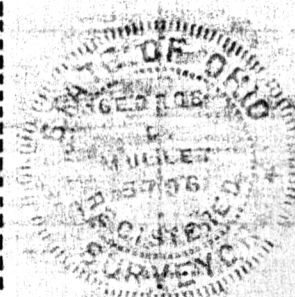
Scale: 1" = 30'

MAP OFFICE COPY

Vol. 133 p. 99

I certify this survey to be correct  
to the best of my knowledge.

George C. Mullett  
Reg. Sur. #5796



Job No. S-8-75