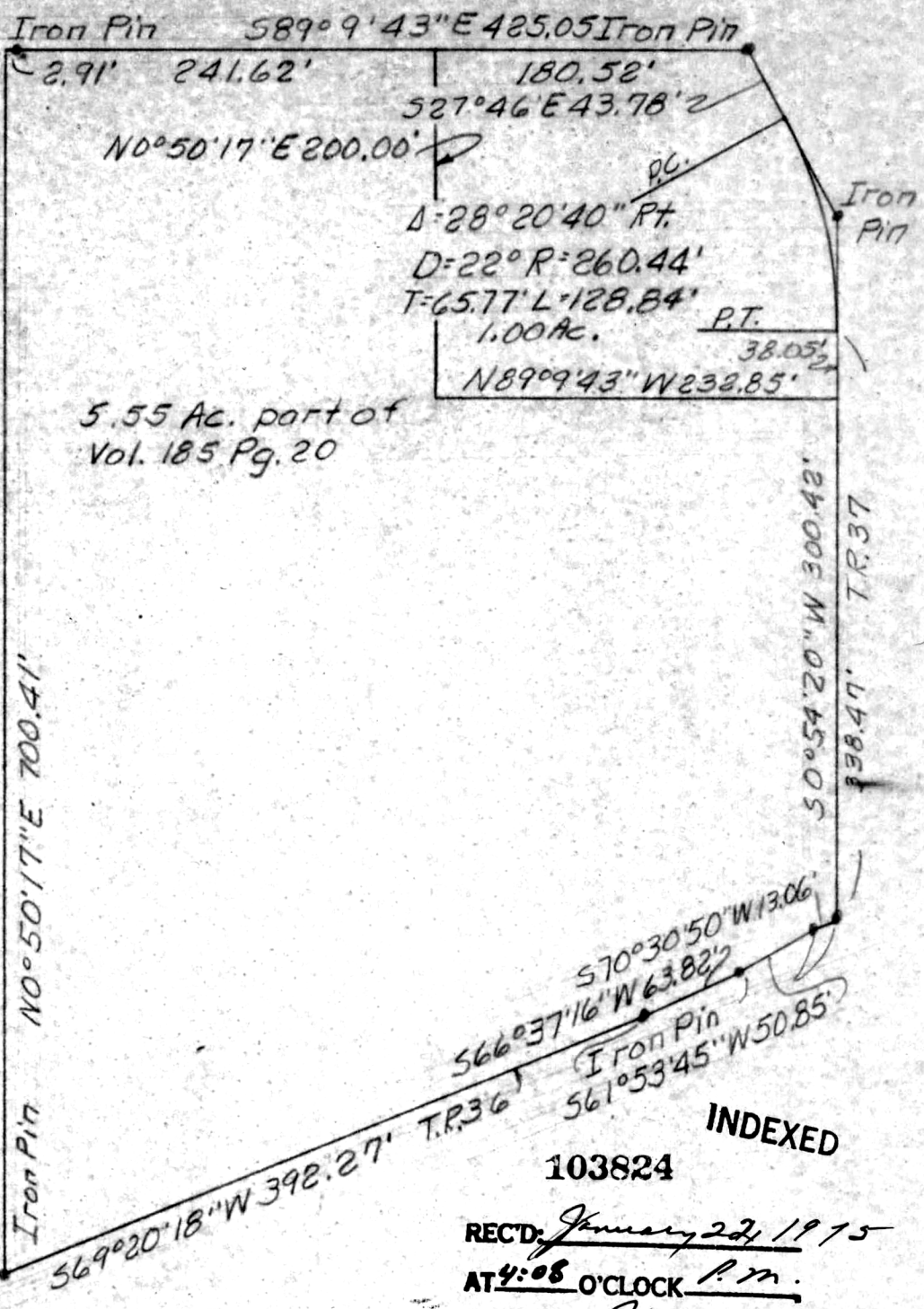


From stone at N. W. corner S23, T8 N, & R8 W to A is as follows;
 S1°46'9"W 1316.13' stone
 S89°4'51"E 165.00' I.P.
 S1°46'9"W 528.00' I.P.
 S89°4'51"E 165.00' I.P.
 S1°46'9"W 226.97' I.P.
 N86°32'37"E 72.23' P.K.
 N69°20'18"E 467.17' "A"



INDEXED

103824

REC'D: January 22, 1915
 AT 4:08 O'CLOCK P.M.
 RECORDED: Jan. 23, 1915
 HOLMES CO. Plat VOL. 7 PG. 385
 FEE: \$ 2.00
Richard [Signature] RECORDER (S. H.)

Scale: 1"=100'



PLAT OF A SURVEY FOR Deed Vol. 189-
 JOE POPA (Grantor) Pg. 632
 Known as part of SW 1/4 S23
 T8 N, & R8 W of Killbuck Twp,
 Holmes Co. Ohio
 Robert L. Kasner, P.S. 5193
 8/4/74