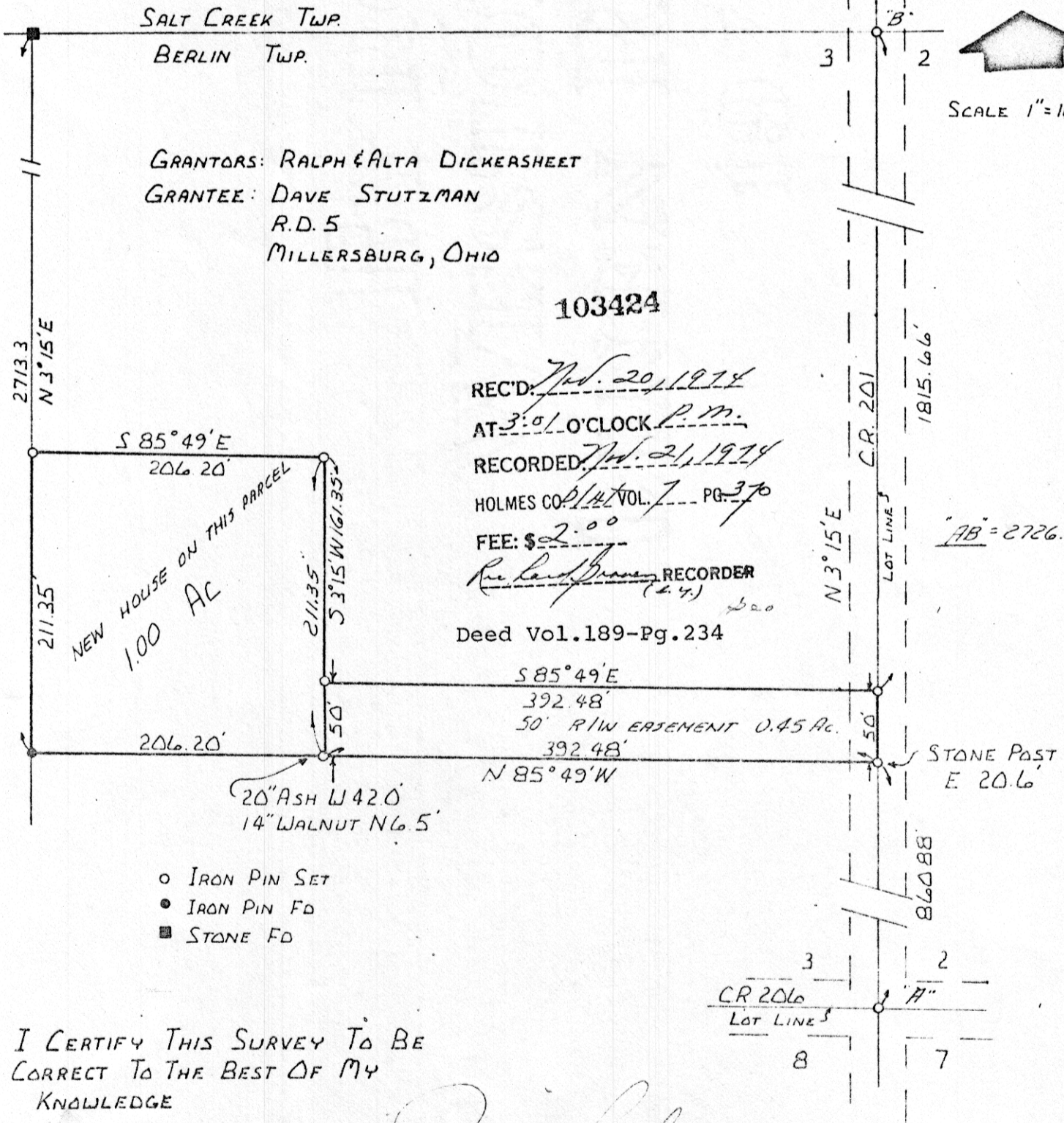


BERLIN TOWNSHIP
LOT 3
1ST ΔTR; T-9N; R-6W
HOLMES COUNTY, OHIO



SCALE 1"=100'



R. W. Gasbarre
 RAY W. GASBARRE P.S. 4153
 R. W. GASBARRE & ASSOC. INC.
 P.O. BOX 44
 WOOSTER, OHIO 44691

S-533-74

MAP OFFICE COPY