

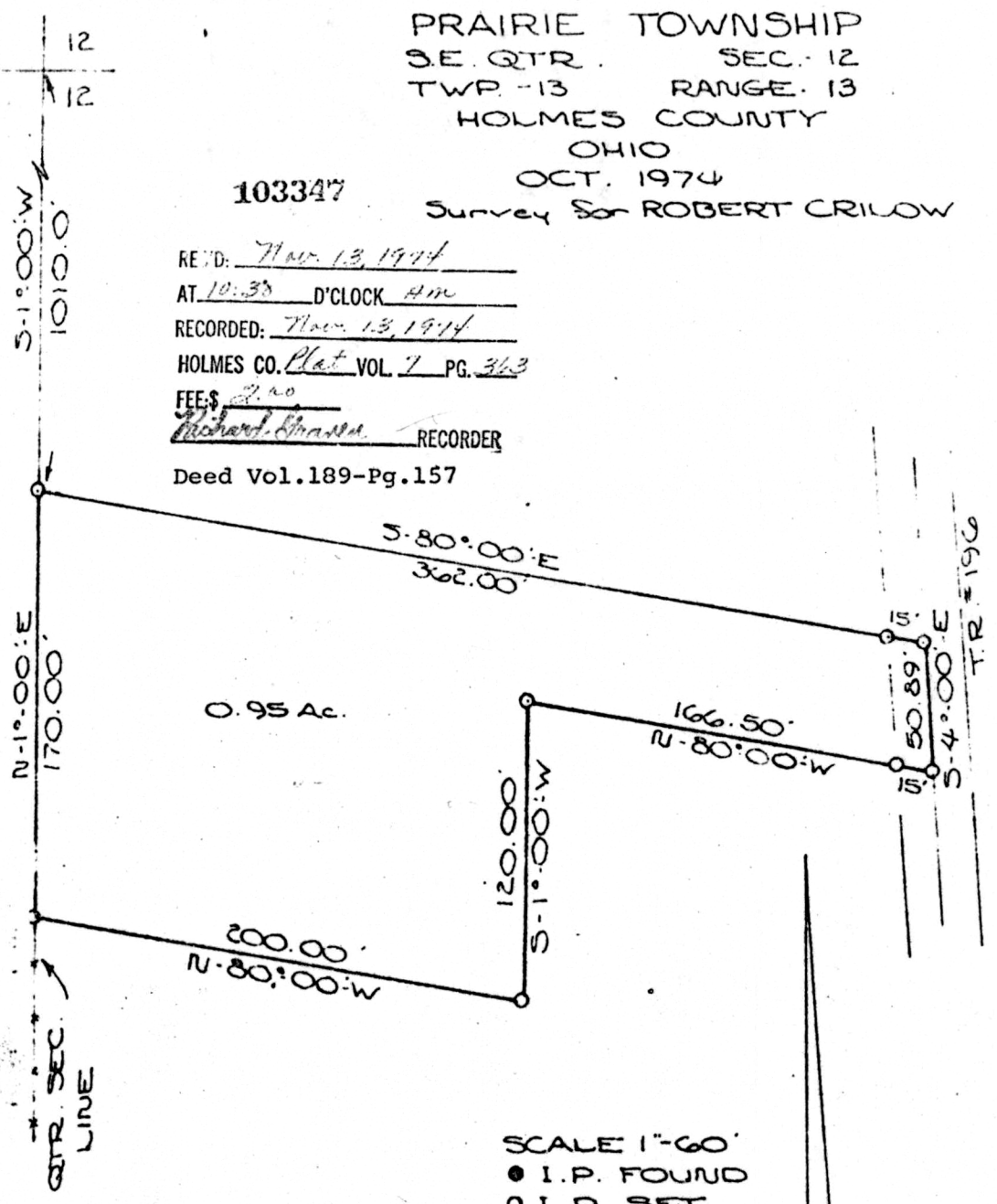
12 12
12 12

PRAIRIE TOWNSHIP
SE. QTR. SEC. 12
TWP. 13 RANGE. 13
HOLMES COUNTY
OHIO

103347

OCT. 1974
Survey for ROBERT CRILLOW

RE'D: Nov. 13, 1974
AT 10:35 O'CLOCK AM
RECORDED: Nov. 13, 1974
HOLMES CO. Plat VOL. 7 PG. 363
FEE \$ 2.00
Richard Strass RECORDER
Deed Vol. 189-Pg. 157



SCALE 1"=60'
● I.P. FOUND
○ I.P. SET
I CERTIFY THIS SURVEY TO BE CORRECT
TO THE BEST OF MY KNOWLEDGE.
Clyde Purdy
CLYDE E. PURDY R.S. #4900

MAP OFFICE COPY