

103263

REC'D: Oct. 31, 1974
AT 3:46 D'CLOCK PM
RECORDED: Nov. 1, 1974
HOLMES CO. Plat VOL. 7 PG. 354
FEES 2.00
Richard Krause RECORDER
Deed Vol. 189-Pg. 76

- PLAT OF SURVEY -

TRACT A OF 1.208 ACRES, W. & J. LANG
TO H. & L. L. FOWLER

TRACT B OF 1.117 ACRES FOR NEW
HOUSE & DRIVEWAY FOR W. & J. LANG

ALL BEING A PART OF THE S.E. 1/4 - SEC. 7
RIPLEY TWP. 17, RANGE 14 HOLMES COUNTY,
OHIO

I HEREBY CERTIFY THIS PLAT OF
SURVEY OF TRACTS A & B TO BE
CORRECT TO A SURVEY MADE BY ME
JANUARY 24, 1974

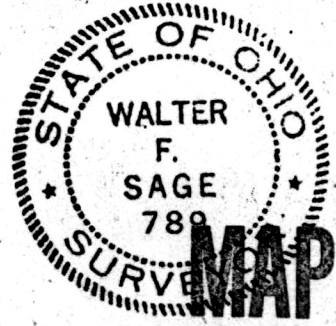
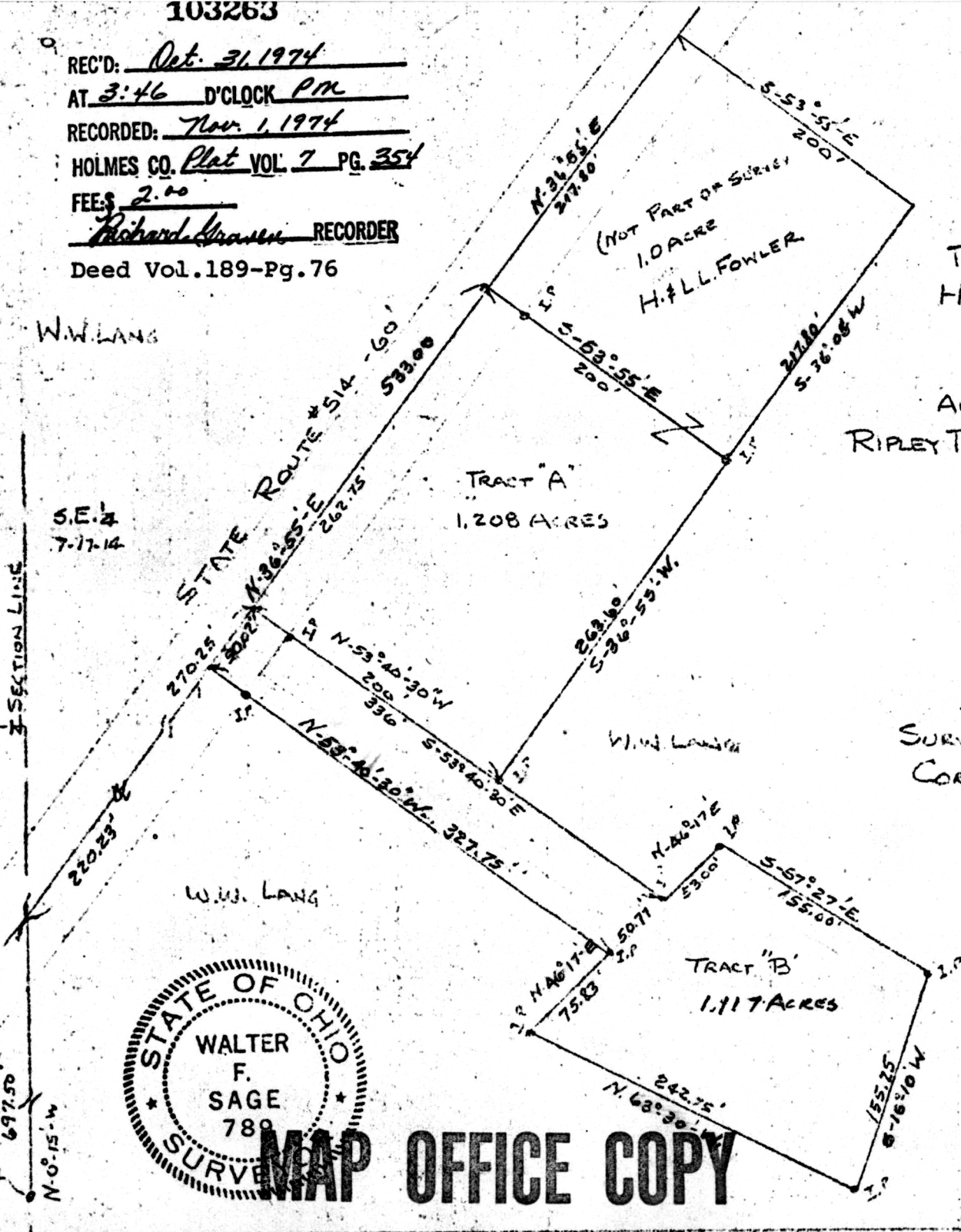
Walter F. Sage

REVISED 2-8-74 50' STRIP
INSTEAD OF 30' STRIP

WALTER F. SAGE
REGISTERED SURVEYOR #789
3904 Darlington Rd. N.W.
CANTON 8, OHIO

DATE: 1-28-73 SCALE: 1"=100'

B. P. DWG. NO. SK 1338



MAP OFFICE COPY

VOL 7 PAGE 354

VOL

S.W. CORNER
S.E. 1/4 - 7-17-14

SW 1/4
7-17-14

SE 1/4
7-17-14

SECTION LINE

W.W. LANG

W.W. LANG

TRACT A
1.208 ACRES

TRACT B
1.117 ACRES

W.W. LANG

(NOT PART OF SURVEY)
1.0 ACRE
H. & L. L. FOWLER