

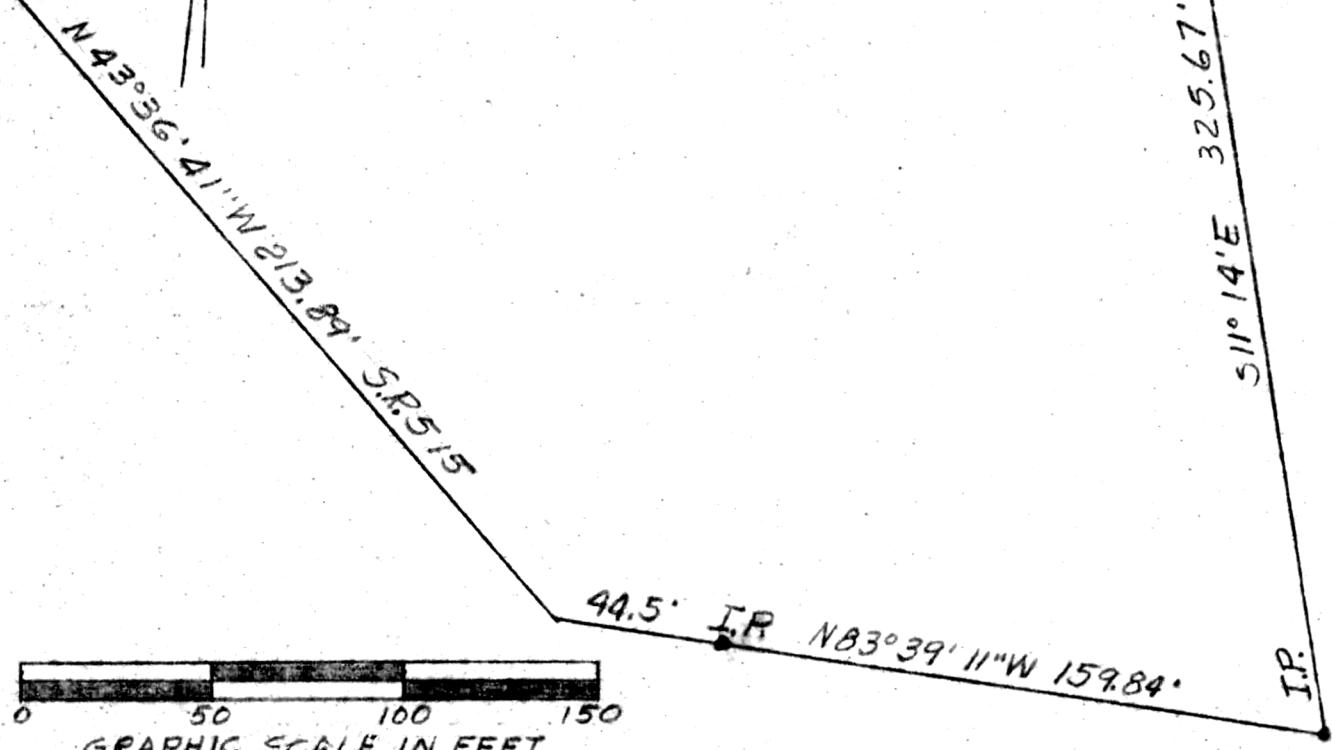
Point "A"

Point A is N86°W 1636.7', S6°18'W 316.3',
S19°19'W 152.8', S38°34'W 213.8', S19°54'W
131.8' E S78°48' E 253.25' from NE crnr
NW 1/4 520, T9N R5W (from Vol. 162 Pg. 252)

Harry N. & Mary Miller 133/549
255.58' I.P. 583°32'03"E

Dan R. & Marilyn Yoder 1.35 Ac 162/529
Nail I.P. 486' 125.11' 202.69' I.P.

1.99 Ac. part of Vol. 133 Pg. 549
Henry N. & Mary Miller to
Milo Miller



Known as part of NW 1/4 520, T9N,
R5W of Walnut Creek Twp., Hd. Co., Ohio.
Robert L. Kasner, P.S. 5193 PE. 28820
9/11/74

MAP OFFICE COPY