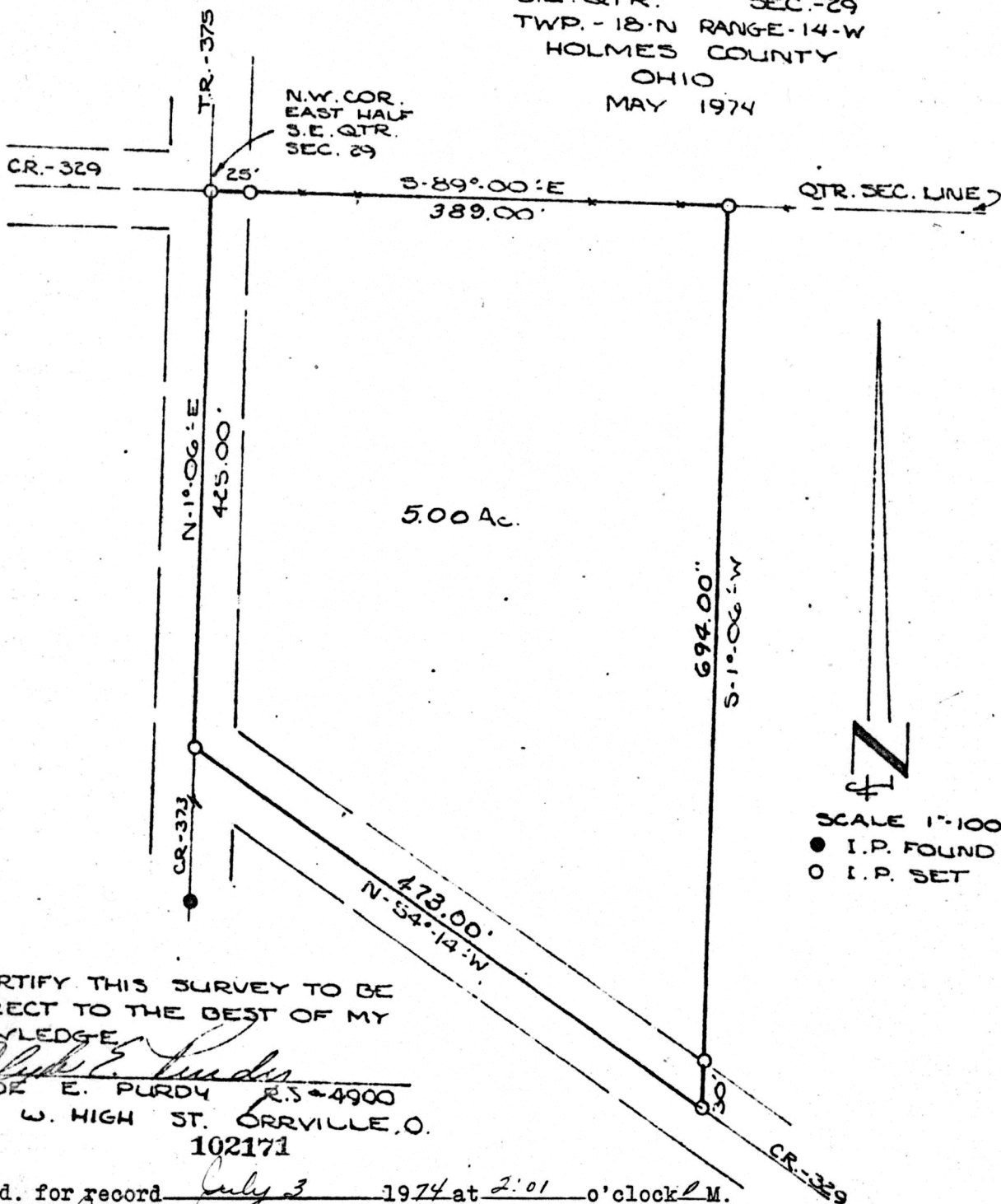


RIPLEY TOWNSHIP
S.E. QTR. SEC. 29
TWP. - 18-N RANGE - 14-W
HOLMES COUNTY
OHIO
MAY 1974



I CERTIFY THIS SURVEY TO BE CORRECT TO THE BEST OF MY KNOWLEDGE

Clyde E. Purdy
CLYDE E. PURDY R.S. 4900
320 W. HIGH ST. ORRVILLE, O.
102171

Rec'd. for record July 3 1974 at 2:01 o'clock P.M.
Recorded July 5 1974 in Plat Vol. 7 Pg. 291.
Holmes County, Ohio Richard Graves Recorder. Fee: \$2.00.

Deed Vol. 187 Page 733

MAP OFFICE COPY