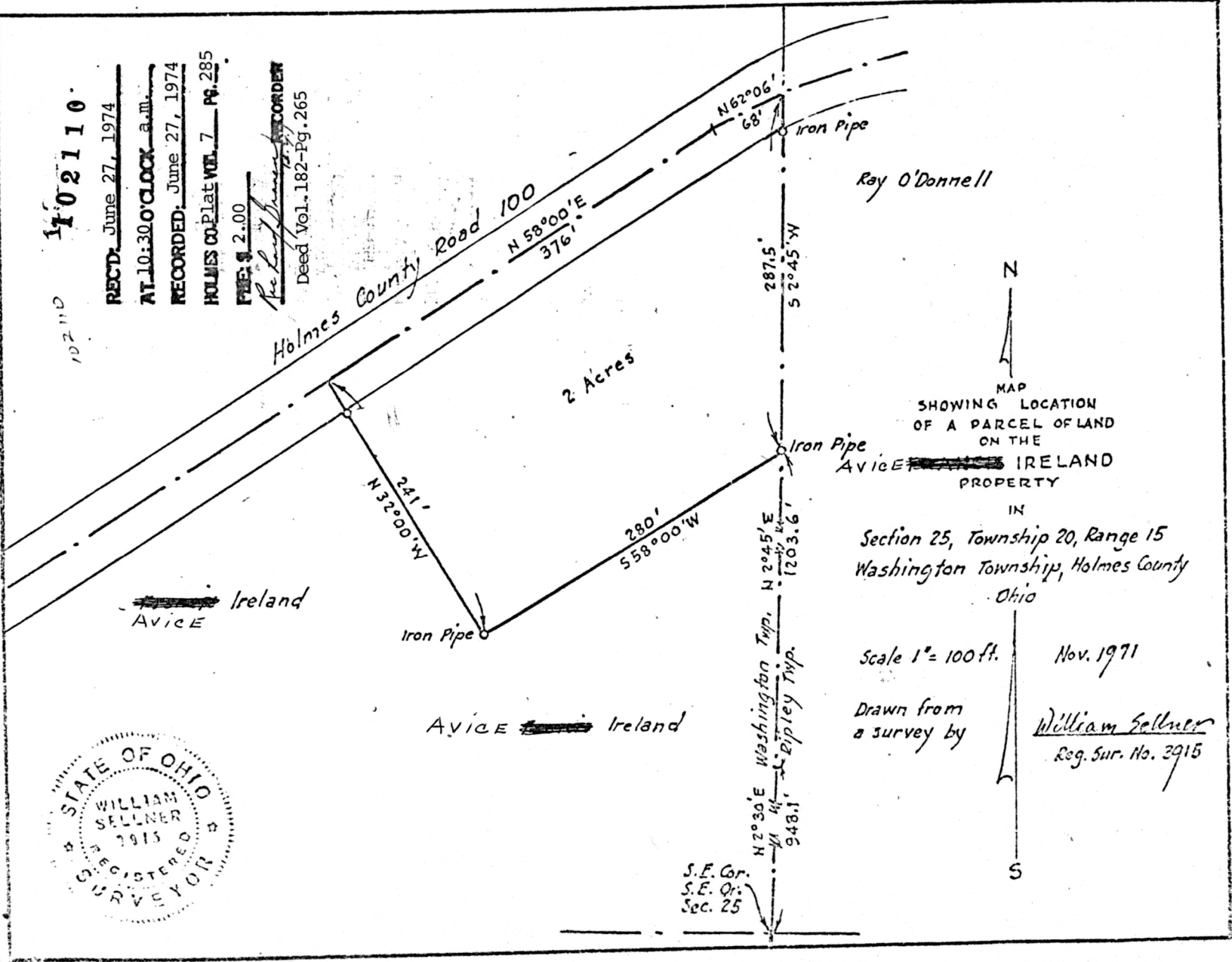


102110

RECTD. June 27, 1974
AT 10:30 O'CLOCK a.m.
RECORDED. June 27, 1974
HOLMES CO. Plat Vol. 7 Pg. 285
FEE \$ 2.00
Deed Vol. 182-Pg. 265



MAP
SHOWING LOCATION
OF A PARCEL OF LAND
ON THE
AVICE IRELAND
PROPERTY

IN
Section 25, Township 20, Range 15
Washington Township, Holmes County
Ohio

Scale 1" = 100 ft.

Nov. 1971

Drawn from
a survey by

William Sellner
Reg. Sur. No. 2915



MAP OFFICE COPY