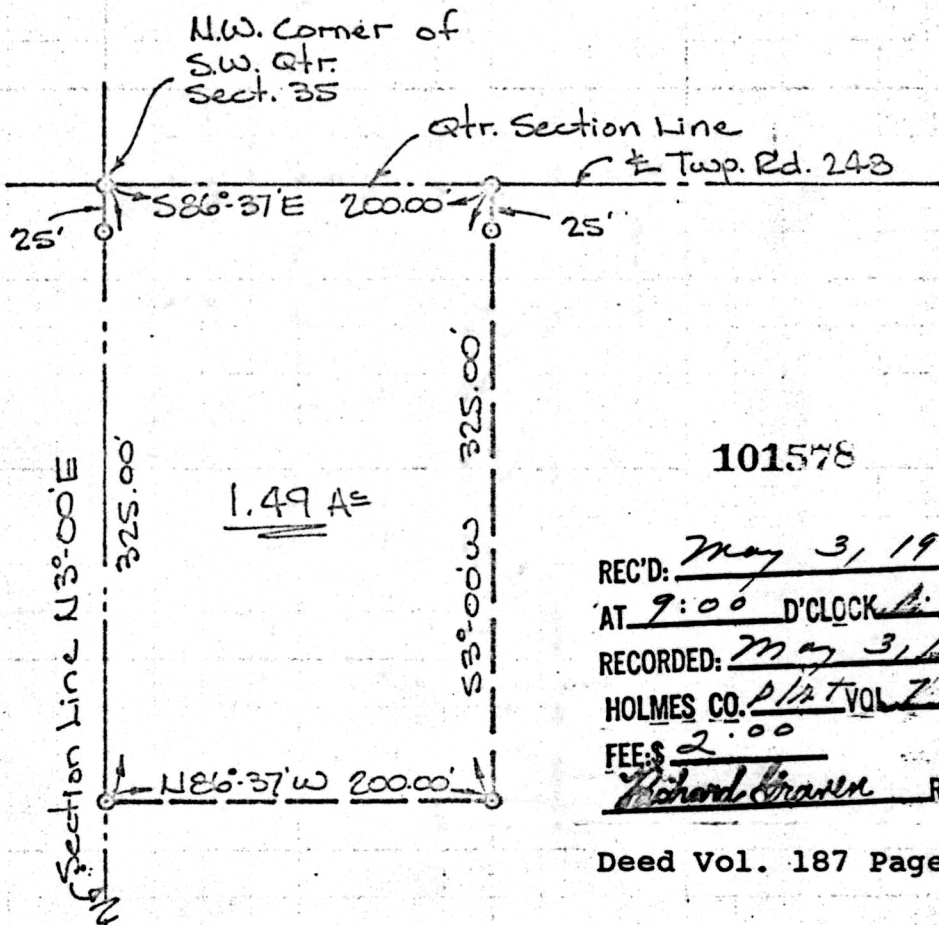


N



Scale: 1" = 100'

○ - Iron Pin Set

Survey for:
Harry D. Hostetler &
John H. Hostetler
March 2, 1974

Corner Post
TL

S.W. QUARTER
SECTION 35
PRAIRIE TWP.
T-14; R-13
HOLMES COUNTY
OHIO

101578

REC'D: May 3, 1974
AT 9:00 D'CLOCK A.M.
RECORDED: May 3, 1974
HOLMES CO. PLAT VOL 7 PG 243
FEES: 2.00
Richard Craven RECORDER

Deed Vol. 187 Page 83

I certify this survey to be correct
to the best of my knowledge.

George C. Mullet

Reg. Sur. # 5796



Ro. No. S-8-74
F.B. 1-10

MAP OFFICE COPY