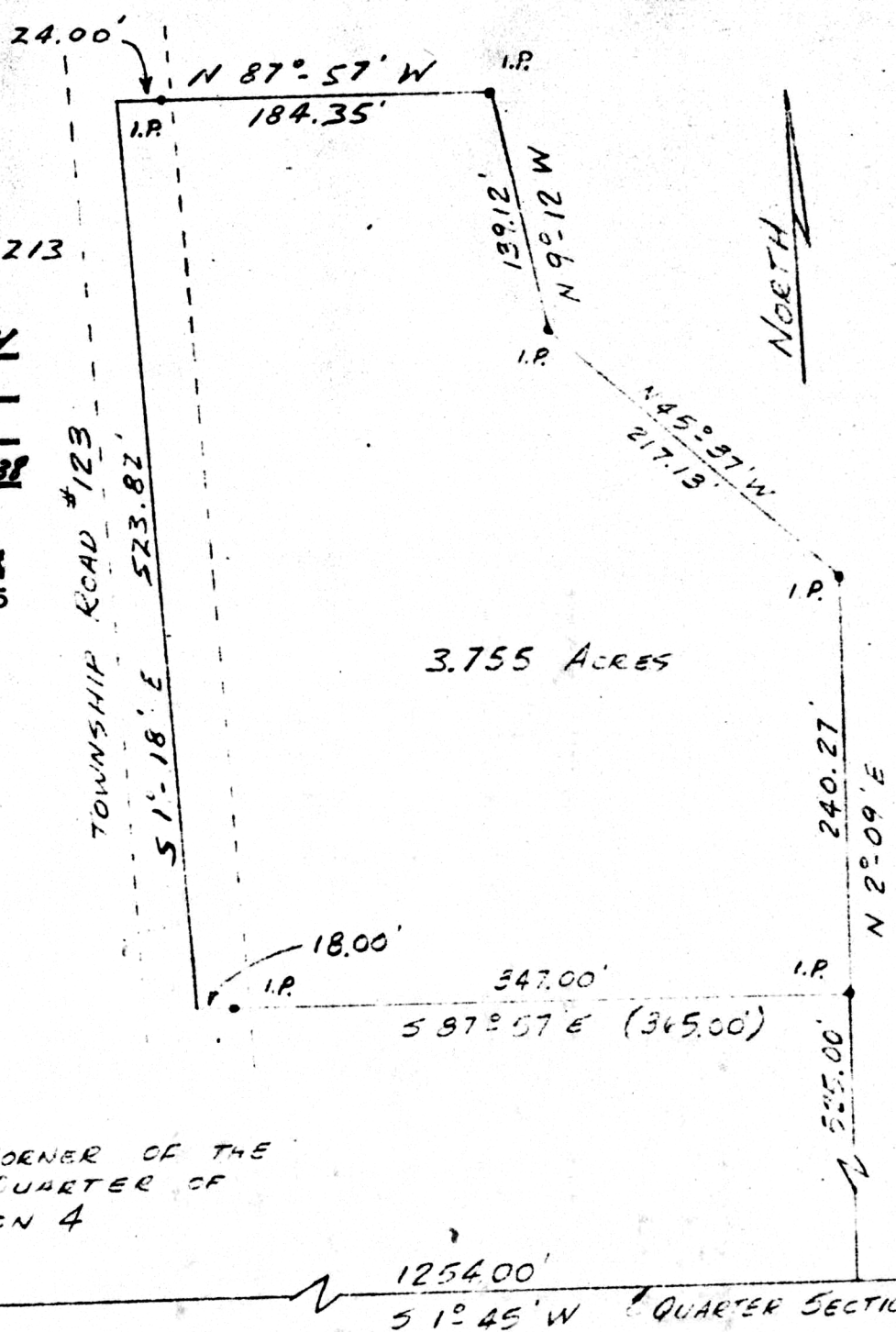


MELVIN & KATIE  
RABER

VOLUME 107, PG 213  
101552

REC'D: April 30<sup>th</sup>, 1974  
AT 10:08 D'CLOCK a.m.  
RECORDED: April 30, 1974  
HOLMES CO. Plat VOL 7 PG 238  
FEE: \$ 2.00

Richard Craven RECORDER  
Deed Vol. 187 Page 55



SECTION LINE

5 4

5 4

S.W. CORNER OF THE  
N.W. QUARTER OF  
SECTION 4

N.W. CORNER OF THE  
S.W. QUARTER OF  
SECTION 4

1254.00'  
S 1° 45' W QUARTER SECTION LINE

SCALE: 1"=100' DATE: 5 DEC. 1973

NORTHWEST QUARTER OF SECTION 4  
TOWNSHIP 8, RANGE 5  
CLARK TOWNSHIP, HOLMES COUNTY

PREPARED BY  
DONALD R. DIMMERMUTH  
REG. SURVEYOR #5075

MAP OFFICE COPY