

101486

REC'D: April 25, 1974

AT 11:38 D'CLOCK A.M.

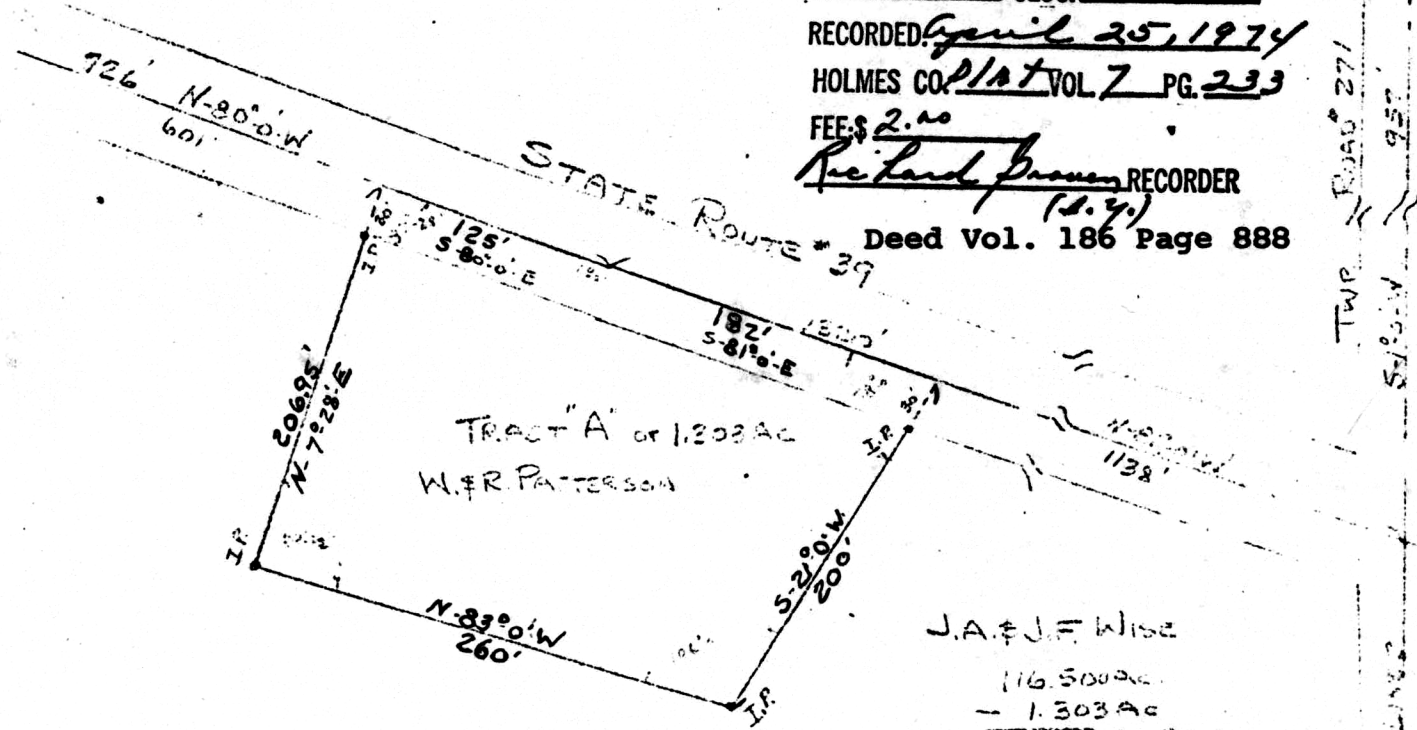
RECORDED: April 25, 1974

HOLMES CO. PLAT VOL 7 PG. 233

FEE: \$ 2.00

Richard J. ... RECORDER
(S.Y.)

Deed Vol. 186 Page 888



NE CORNER
NE 1/4-15-19-15



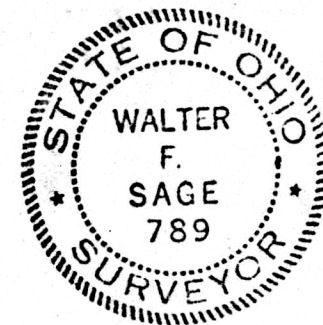
- PLAT OF SURVEY -

J.A. & J.E. WISE
 116.5000 ac.
 - 1.303 ac.
 115.197 ac. Remainder

1.303 Acre Tract A For W. & R. Patterson

BEING A PART OF THE NE 1/4-SEC#15, WASHINGTON TWP#19
RANGE#15, HOLMES COUNTY, OHIO.

I HEREBY CERTIFY THE ABOVE PLAT OF SAID TRACT A
TO BE CORRECT TO A SURVEY, MADE BY ME NOVEMBER 23, 1973



WALTER F. SAGE
 REGISTERED SURVEYOR #789
 3904 Darlington Rd. N.W.
 CANTON 8, OHIO

DATE: 11-23-73 SCALE: 1"=100'

B. P. DWG. NO. SK-1272

MAP OFFICE COPY

Walter F. Sage