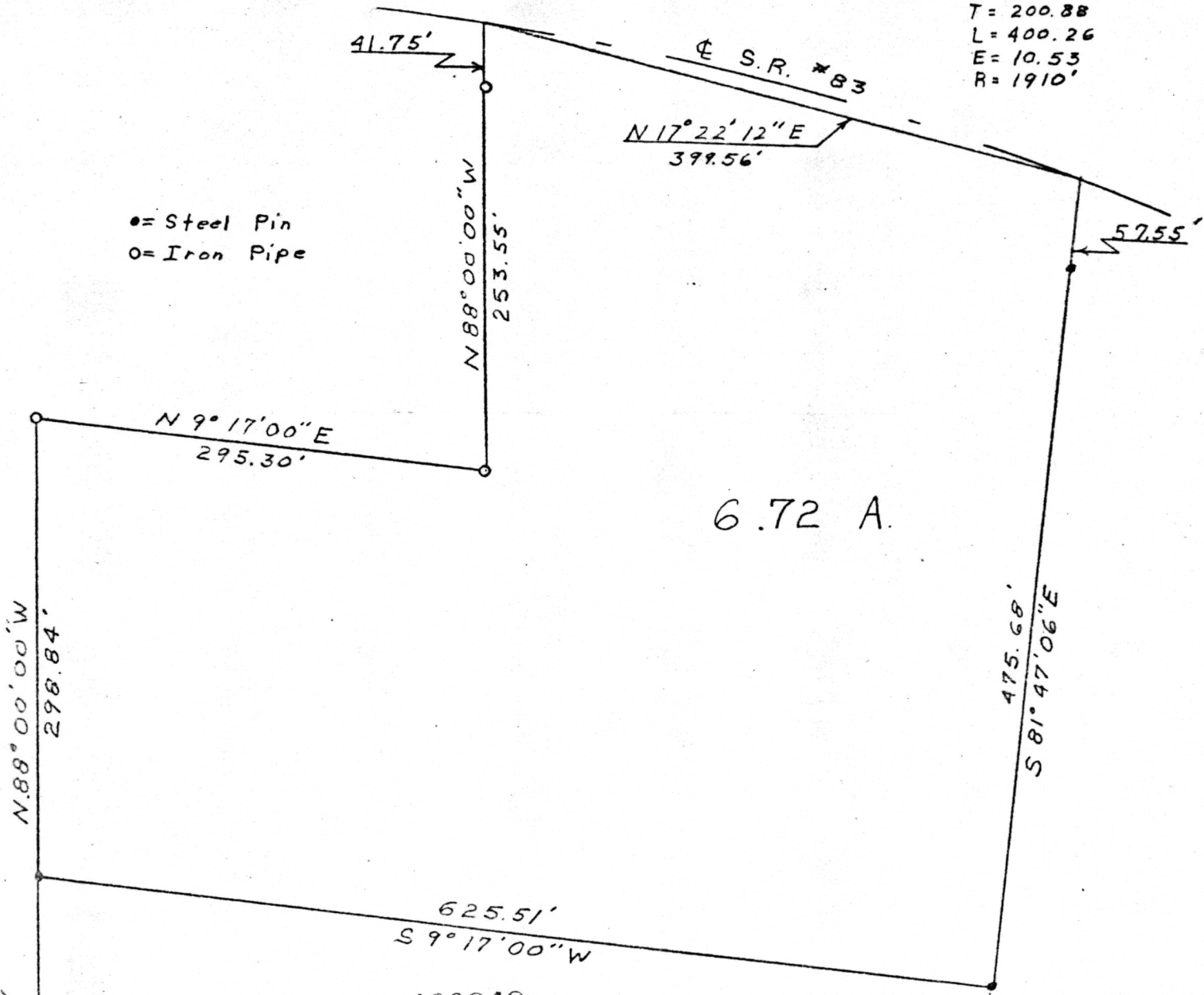


$\Delta = 12^{\circ}00'28''$
 $D = 3'$
 $T = 200.88$
 $L = 400.26$
 $E = 10.53$
 $R = 1910'$

● = Steel Pin
 ○ = Iron Pipe



6.72 A.

611.66'
 N.88°00'00\"/>

100848
 REC'D: Jan. 28, 1974
 AT 3:32 O'CLOCK PM
 RECORDED: Jan. 29, 1974
 HOLMES CO. Plat VOL. 7 PG 194
 FEE: \$ 2.00
Richard Craven RECORDER

Plat of a Tract of Land
 in
 Section 10
 Range 7W Township 8N
 Mechanic Township
 Holmes County
 Ohio

Scale: 1"=100'
 October 26, 1973

MAP OFFICE COPY