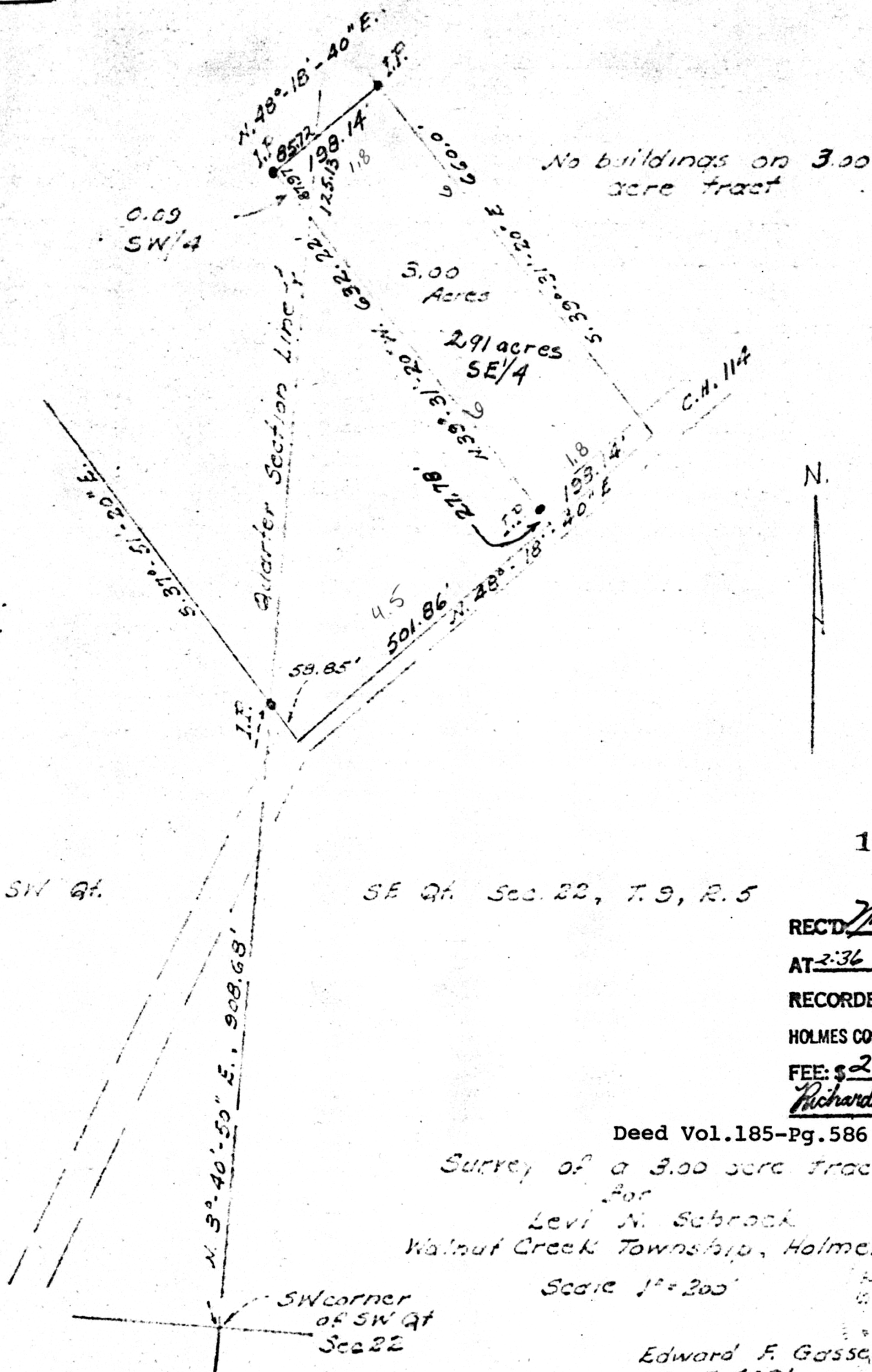


Jacob D. & Lydia Ann Schwartz



No buildings on 3.00 acre tract



100392

REC'D Nov. 20, 1973  
 AT 2:36 O'CLOCK P.M.  
 RECORDED Nov. 21, 1973  
 HOLMES CO. 1/4 VOL 7 PG. 158  
 FEE: \$ 2.00  
Richard Kraven RECORDER

Deed Vol. 185-Pg. 586

Survey of a 3.00 acre tract

for Levi N. Schrock

Walnut Creek Township, Holmes Co., Ohio

Scale 1" = 200'

Edward F. Gasser  
P.S. # 4681

Acreage added July 14, '73

June 14, 1973

MAP OFFICE COPY