

Stone at NW corner NW 1/4, NE 1/4  
S15, T8N, R8W

99918

REC'D *Sept. 17, 1973*

AT 3:16 O'CLOCK *P.M.*

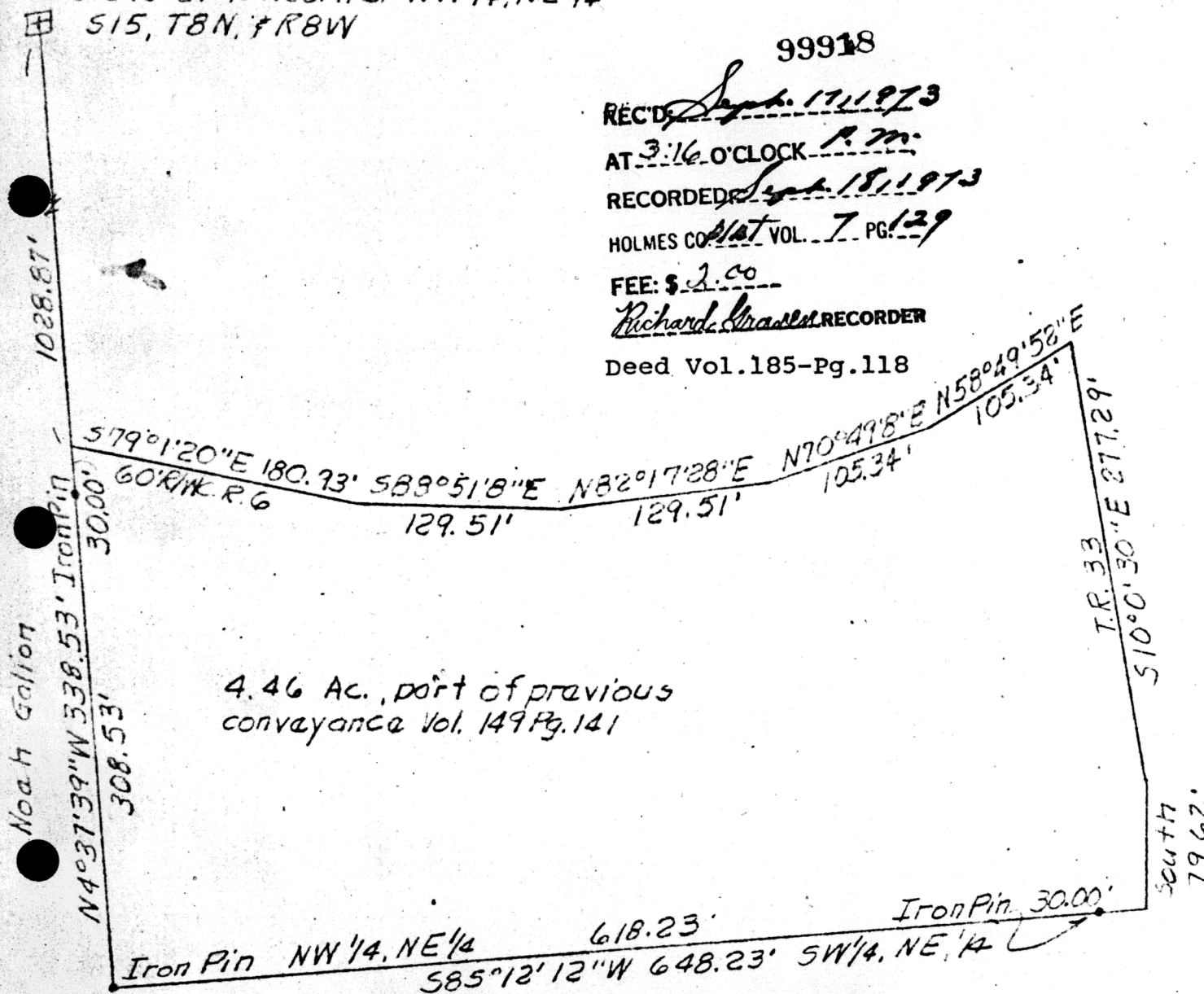
RECORDED *Sept. 18, 1973*

HOLMES CO. *Vol. 7* PG. *129*

FEE: \$ *2.00*

*Richard Crider* RECORDER

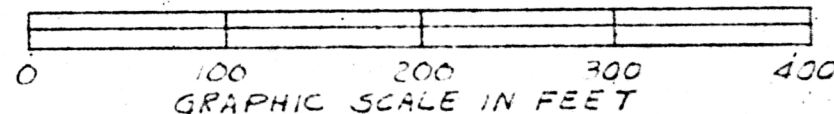
Deed Vol. 185-Pg. 118



4.46 Ac. part of previous conveyance Vol. 149 Pg. 141

Sam Crider

MAP OFFICE COPY



PLAT OF A SURVEY FOR  
LEWIS O. GLISSON (Grantor)  
Known as part of NW 1/4, NE 1/4 S15, T8N, R8W  
of Richland Township, Holmes Co., Ohio  
Robert L. Kasner, Reg. Surv. #5193

9/12, 1973

Josephine Wail  
pickup

VOL 7  
PAGE 129