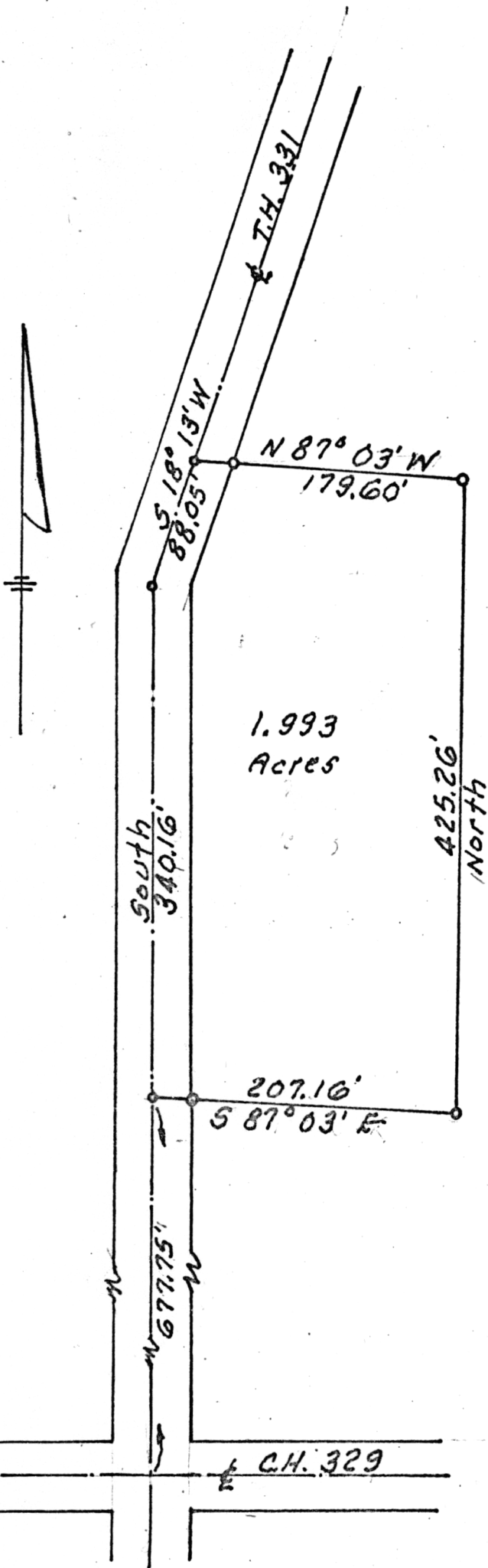


PLAT SHOWING SURVEY OF  
 1.993 ACRES  
 SOUTHWEST QUARTER, SECTION 6  
 PRAIRIE TOWNSHIP  
 HOLMES COUNTY, OHIO



99872

REC'D Sept. 12, 1973  
 AT 11:41 O'CLOCK a.m.  
 RECORDED Sept. 12, 1973  
 HOLMES CO. 1/2 VOL 7 PG 126  
 FEE: \$ 2.00  
Richard Craven RECORDER  
 Deed Vol. 185-Pg. 79

August 25, 1973  
 Scale 1"=100'  
 By: Shelby J. Edwards  
 Registered Surveyor  
 3925

*David P. Jones*

MAP OFFICE COPY