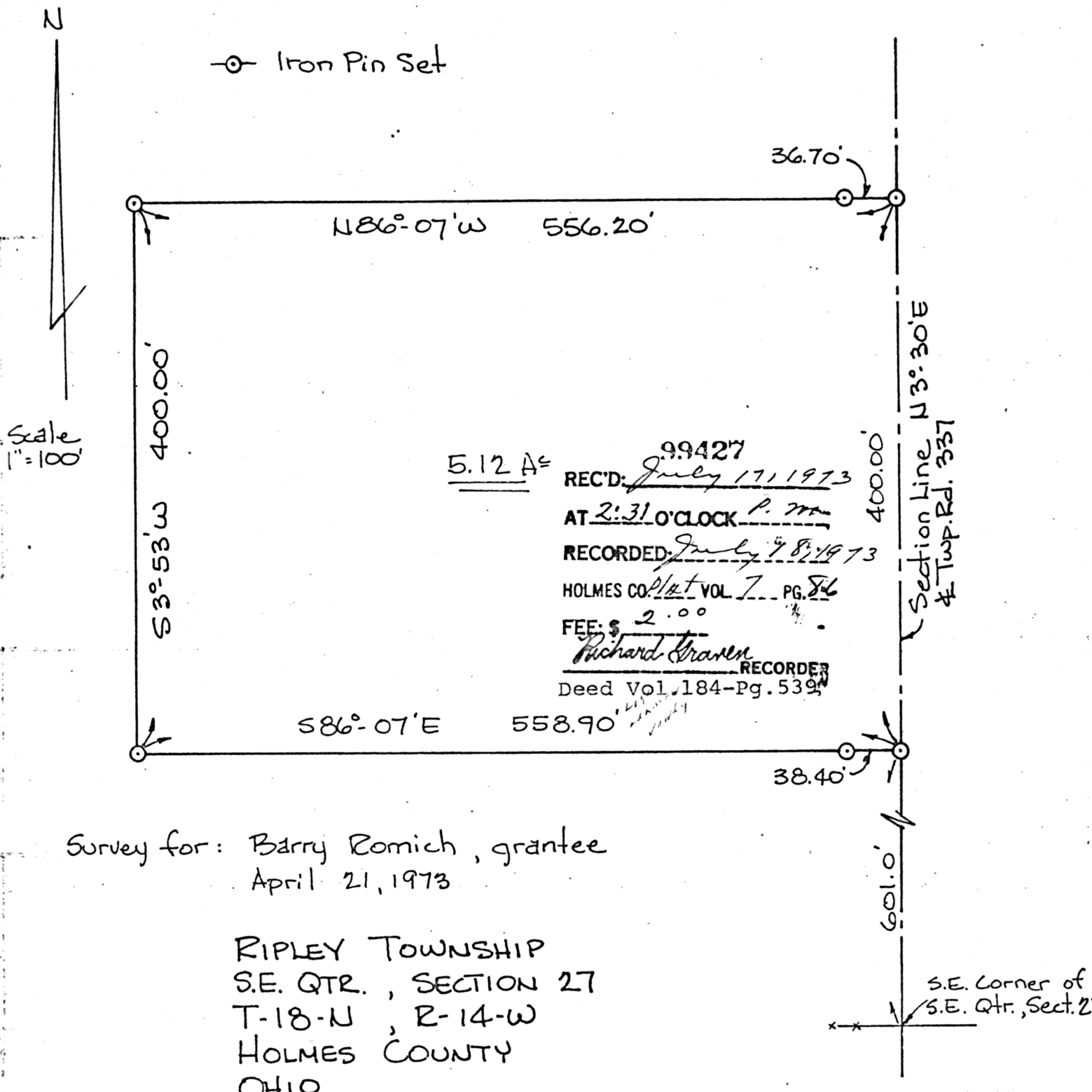


Iron Pin Set



5.12 A[±] REC'D: 99427
July 17, 1973
 AT 2:31 O'CLOCK P. M.
 RECORDED: *July 18, 1973*
 HOLMES CO. Plat VOL 7 PG. 86
 FEE: \$ 2.00
Richard Cranen RECORDER
 Deed Vol. 184-Pg. 539

Survey for: Barry Romich, grantee
 April 21, 1973

RIPLEY TOWNSHIP
 S.E. QTR., SECTION 27
 T-18-N, R-14-W
 HOLMES COUNTY
 OHIO

S.E. Corner of
 S.E. Qtr., Sect. 27

I certify this survey to be correct
 to the best of my knowledge.

George C. Mullet, R.S. #5796

GEORGE C. MULLET
 Engineer & Land Surveyor
 4832 WILSON DRIVE
 WOOSTER, OHIO 44691



Job No. S-16-73

MAP OFFICE COPY

149.53
 5.35
 5.12
 160.00

200