

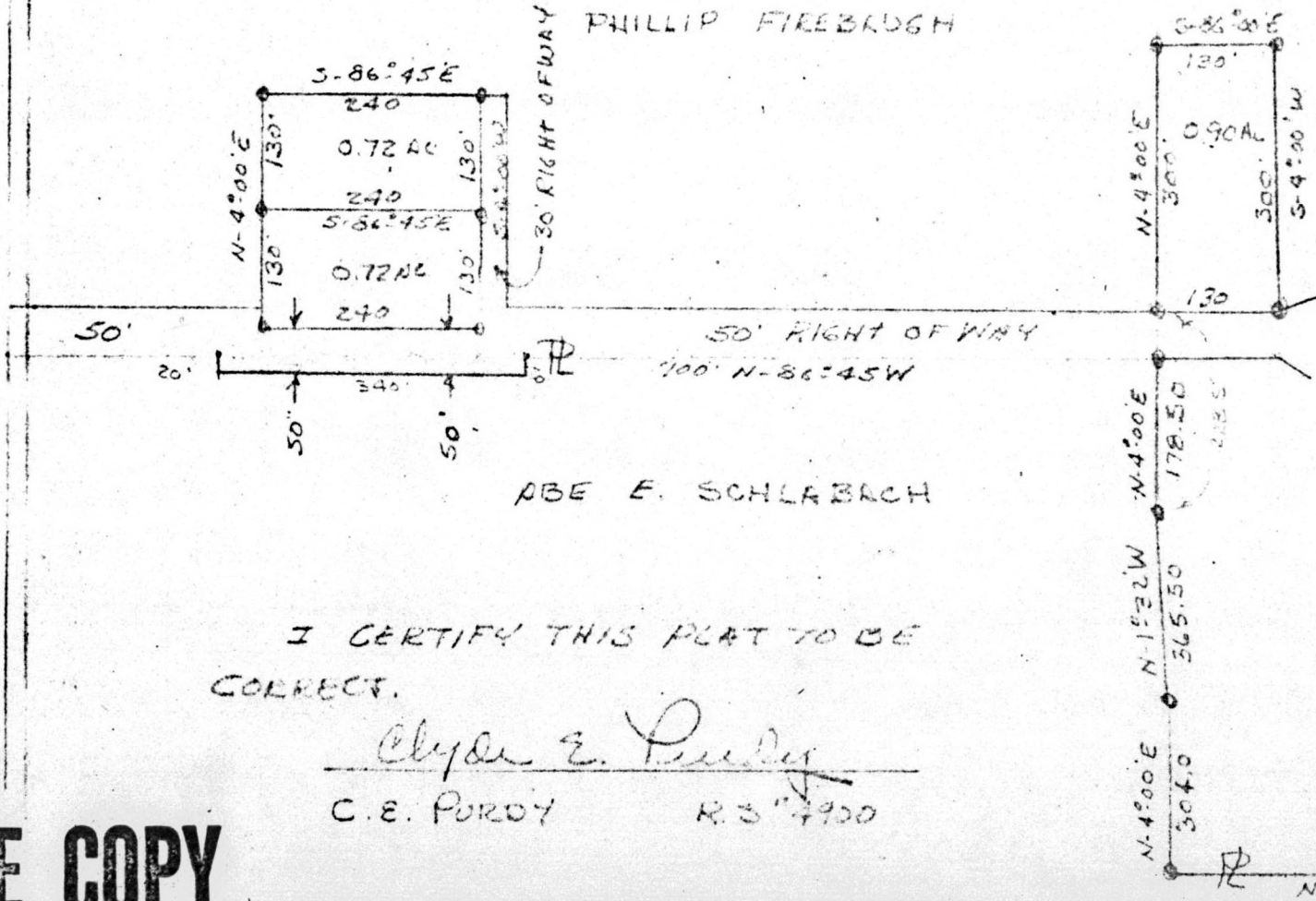
PRAIRIE TOWNSHIP
 N.E. QTR. SEC. 32
 TWP. 14 RANGE 13
 HOLMES COUNTY
 OHIO

INDEXED 99057

REC'D: June 12, 1973
 AT 10:37 O'CLOCK AM
 RECORDED: June 12, 1973
 HOLMES CO. PLAT VOL. 7 PG. 53
 FEE: \$ 2.00
Richard Graner
 RECORDER
 Deed Vol. 184-Pg. 236

ANDY MLOT

TR # 323



SCALE 1"=200'
 ● IRON PINS

I CERTIFY THIS PLAT TO BE
 CORRECT.

Clyde E. Purdy
 C.E. PURDY R.S. # 7900

S.E. COR
 N.E. QTR
 SEC 32

MAP OFFICE COPY

VOL 7 PAGE 53