

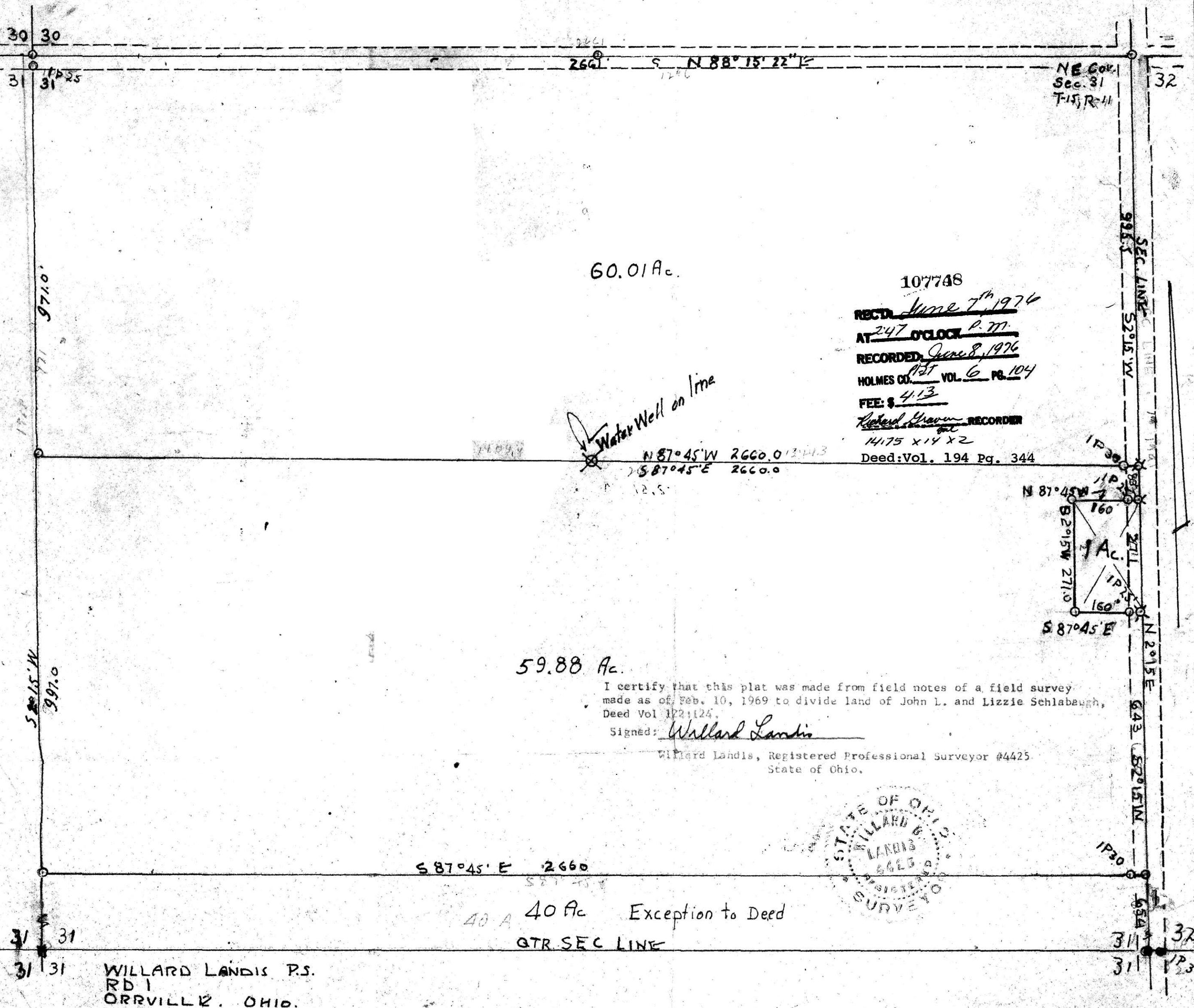
- A. IP set; IP 30 ft south
 Tripple Elm SE 64.5-spike in tree
 Electric pole NW 134.6 ft
 18" Wild Cherry with spike E. 74.5 ft
- B. 14" Oak with spike on DE side, SW 41.0 ft
 Elec Pole NE 22.5 ft
 Tel Pole SE 89.0

PAINT TOWNSHIP--HOLMES XCOUNTY

PART OF THE NORTHEAST QUARTER, SECTION 31, T-15, R-11

- IP Set
- IP Found
- ✕ Drive Spike set
- Stone Found

Scale 1"=200 ft



60.01 Ac.

59.88 Ac.

107748
 RECD June 7th 1976
 AT 2:47 O'CLOCK P.M.
 RECORDED June 8, 1976
 HOLMES CO. 1957 VOL. 6 PG. 104
 FEE: \$ 4.13
 Richard Brown RECORDER
 14.75 x 14 x 2
 Deed: Vol. 194 Pg. 344

Water Well on line
 N 87° 45' W 2660.0
 S 87° 45' E 2660.0

I certify that this plat was made from field notes of a field survey made as of Feb. 10, 1969 to divide land of John L. and Lizzie Schlaubaugh, Deed Vol 122:124.

Signed: Willard Landis

Willard Landis, Registered Professional Surveyor #4425
 State of Ohio.



S 87° 45' E 2660

40 A 40 Ac Exception to Deed

GTR SEC LINE

WILLARD LANDIS P.S.
 RD 1
 ORRVILLE, OHIO.