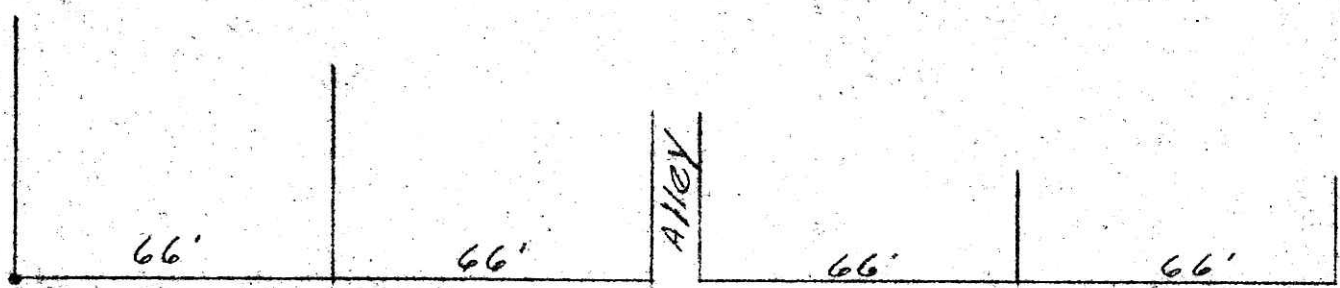


JM

NORTH GRANT ST.  
49.5'  
N1030'E

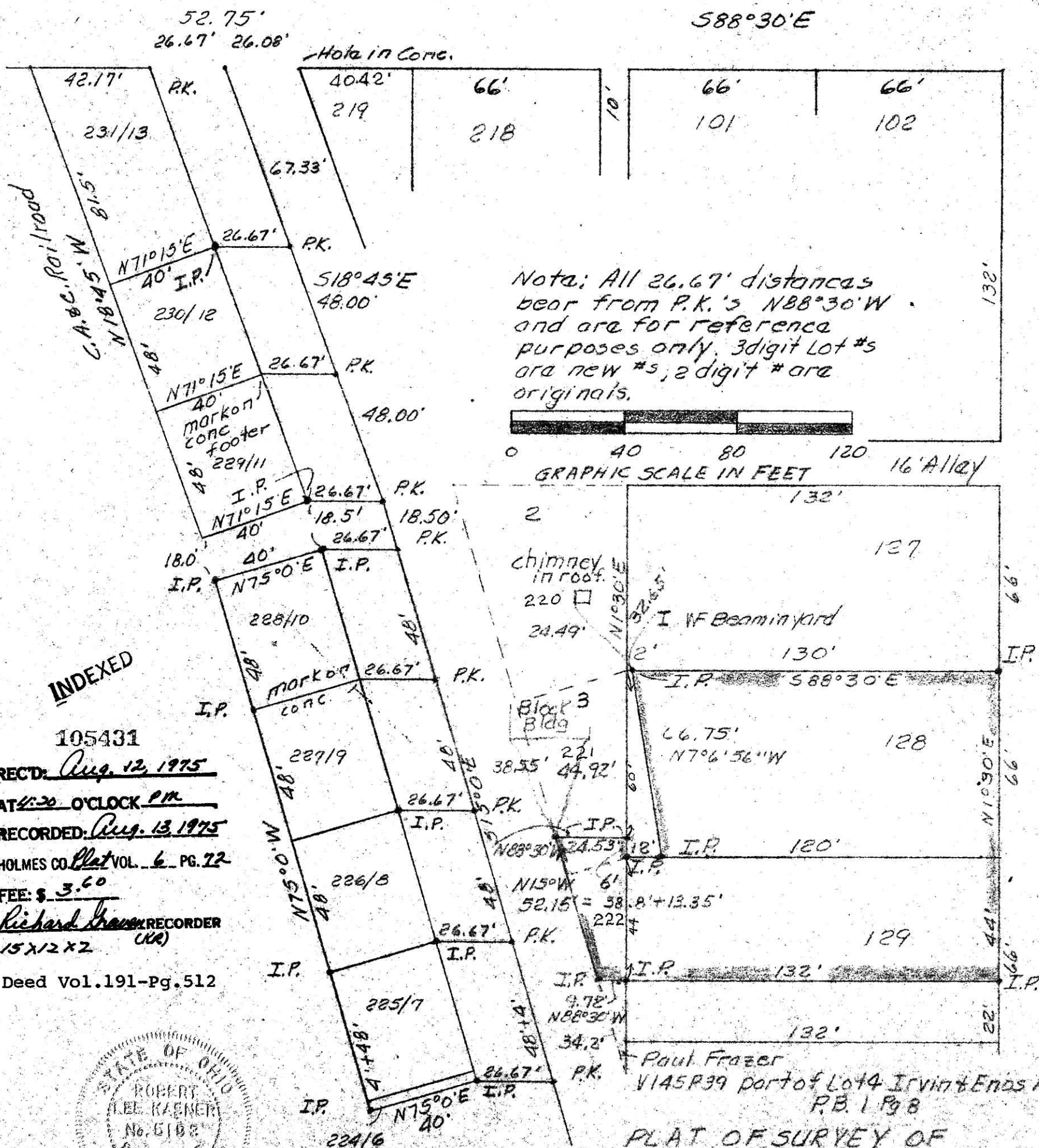


I.P.

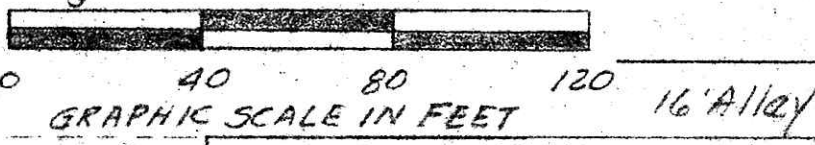
WEST JACKSON ST. 66'  
588°30'E

SOUTH MADANTHONY ST. 49.5'  
N1030'E

Stone



Note: All 26.67' distances bear from P.K.'s N88°30'W and are for reference purposes only. 3 digit Lot #s are new #s, 2 digit # are originals.



INDEXED

105431

REC'D: Aug. 12, 1975  
AT 4:20 O'CLOCK P.M.  
RECORDED: Aug. 13, 1975  
HOLMES CO. Plat VOL. 6 PG. 22  
FEE: \$ 3.60  
Richard Kraus RECORDER  
15 X 12 X 2 (CR)  
Deed Vol. 191-Pg. 512



MAP OFFICE COPY

PLAT OF SURVEY OF IRVIN & ENOS ADDITION TO MILLERS BURG see P.B. 1 Pg. 849 as Laid out June 1853 Robert L. Kasner P.S. 5193

Paul Frazer  
V145P39 part of Lot 4 Irvin & Enos Addition  
P.B. 1 Pg 8