

W.C. & IONA M. PYERS

LOT No. 799

PAUL & RUTH MAST

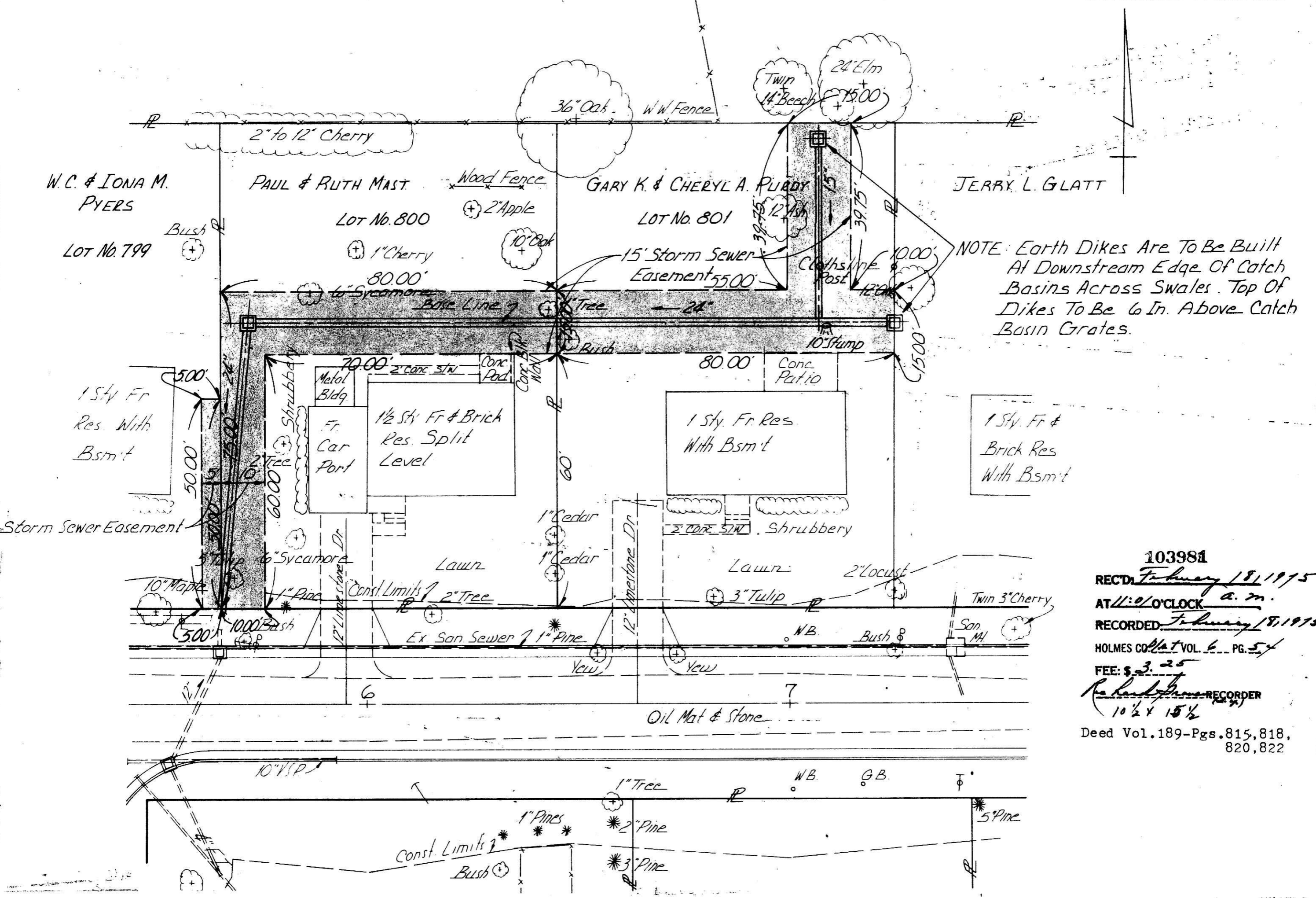
LOT No. 800

GARY K. & CHERYL A. PURDY

LOT No. 801

JERRY L. GLATT

NOTE: Earth Dikes Are To Be Built At Downstream Edge Of Catch Basins Across Swales. Top Of Dikes To Be 6 In. Above Catch Basin Grates.



103981

REC'D February 18, 1915

AT 11:01 O'CLOCK a.m.

RECORDED February 18, 1915

HOLMES CO. Plat VOL. 6 PG. 54

FEE: \$3.25

Re-handled by Recorder

10 1/2 x 15 1/2

Deed Vol. 189-Pgs. 815, 818, 820, 822