

S.W. QUARTER  
SECTION 12  
HARDY TWP.  
T-9, R-7  
HOLMES COUNTY  
OHIO

Survey for: John C. Hipp, grantor  
Holmes County Commissioners  
June 29, 1974

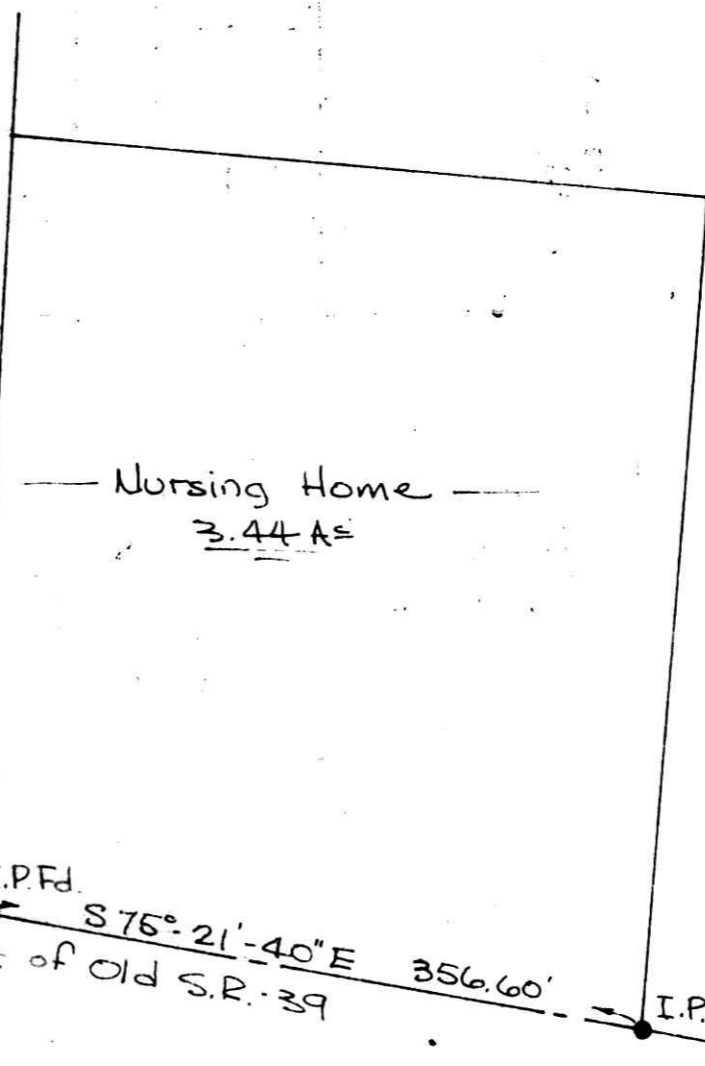
1058 A<sub>s</sub>

Holmes County Commissioners  
9.47 A<sub>s</sub>

Deed Vol. 132 p. 511  
Plat Vol. 3 p. 15

Deed Vol. 160 p. 409

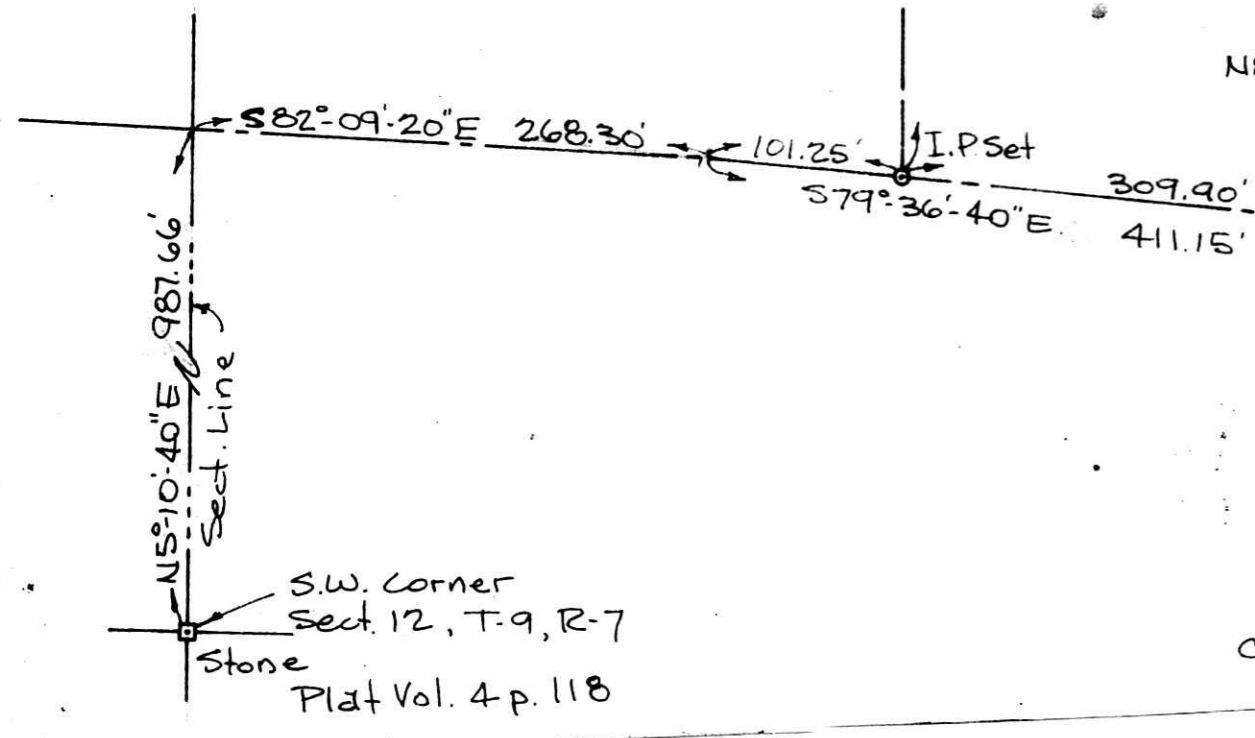
102751  
RECD: Sept. 3, 1974  
AT 1:53 O'CLOCK P.M.  
RECORDED: Sept. 4, 1974  
HOLMES COLLET VOL. 6 PG. 36  
FEE: \$ 9.16  
Richard Craven RECORDER  
24x17x02  
Deed Vol. 188 Page 490



Job No S-21-74  
FB. # 1 p. 27

I certify this survey to be  
correct to the best of my knowledge.

George C. Mullett  
Reg. Sur. # 5796  
GEORGE C. MULLETT  
Engineer & Land Surveyor  
462 WILSON DRIVE  
WOOSTER, OHIO 44691



N5°-10'-40\"/>

S.W. Corner  
Sect. 12, T-9, R-7  
Stone  
Plat Vol. 4 p. 118