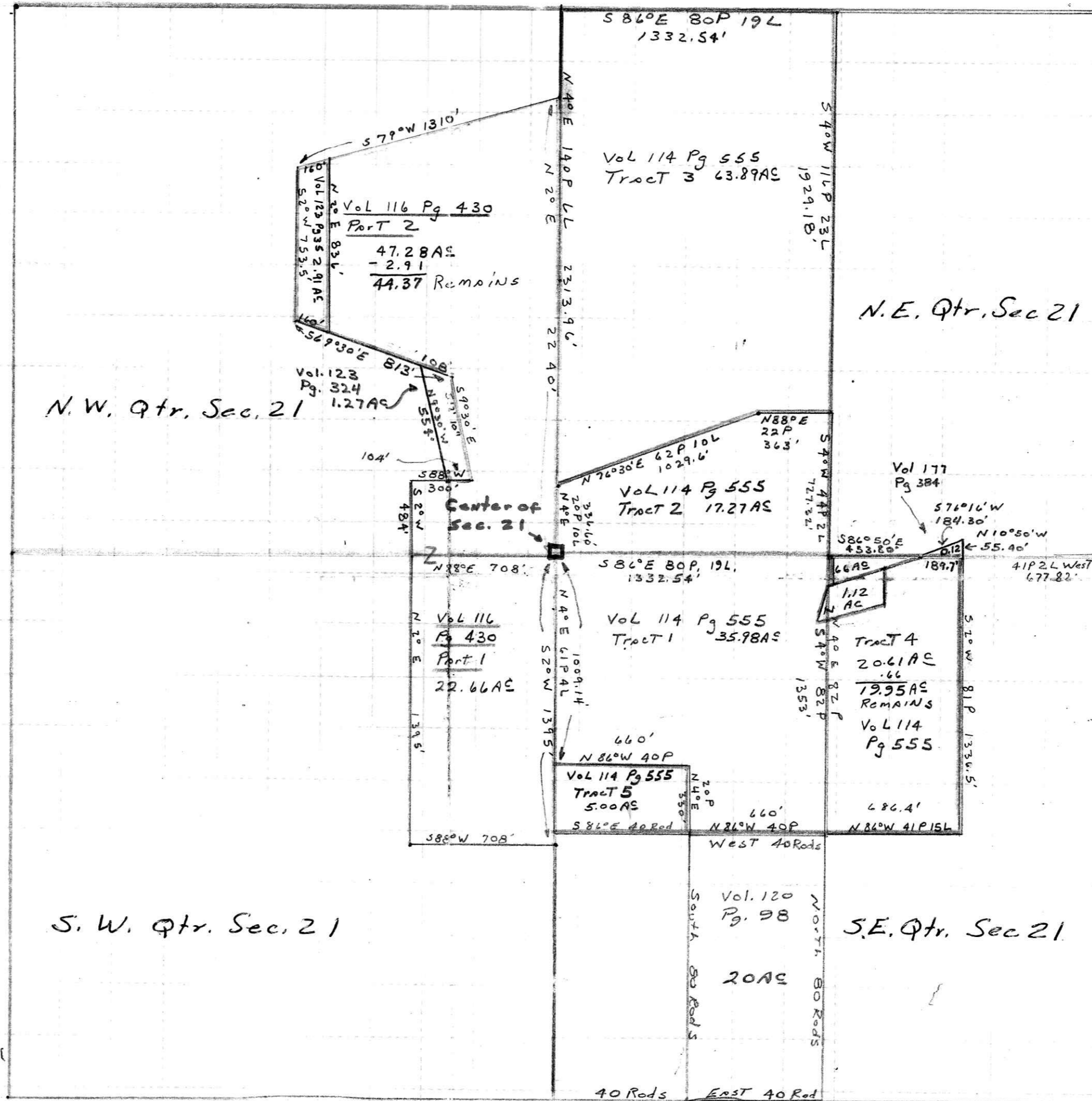


Volume 123 Pg 35 = 2.91 AC  
 To be Excepted from Vol. 116 Pg 430

My Survey 8/23/70 = 1.12 AC  
 Marked Rober To Yoder has:

0.95 AC Lies in Tract 4 Vol 114 Pg 555  
 0.17 AC Lies in Tract 1 Vol 114 Pg 555  
1.12 AC Total

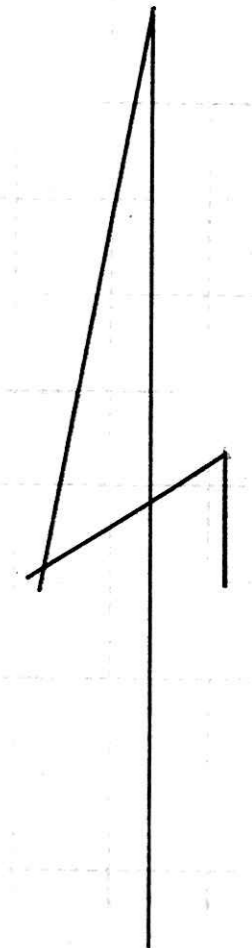
The 0.66 AC Part of The Survey I did in June, 1971 - Marked Rober & Brenly is part of The Excepted Piece of The 0.66 AC Exception in Tract 4 Vol 114 Pg 555, Thus it appears Rober didn't own it in the first place. When I was down there Rober claimed he owned it & Brenly's Agreed with him. Then They came up with The Idea of Trading Parcels. Brenly's couldn't come up with a deed to show ownership of The 0.66 AC so we surveyed it off so Brenly would have everything on the North Side of the Road & Rober have everything on the South Side.



102176

RECORDED July 3, 1974  
 AT 3:32 O'CLOCK PM  
 RECORDED July 5, 1974  
 HOLMES CO. Plat VOL. 6 PG. 33  
 FEE \$ 4.90  
 Richard Brown RECORDER  
 12 7 20

Deed Vol. 187 Pages 736  
 740  
 744



Scale 1" = 500'  
 Deed Lines  
 Exception Lines