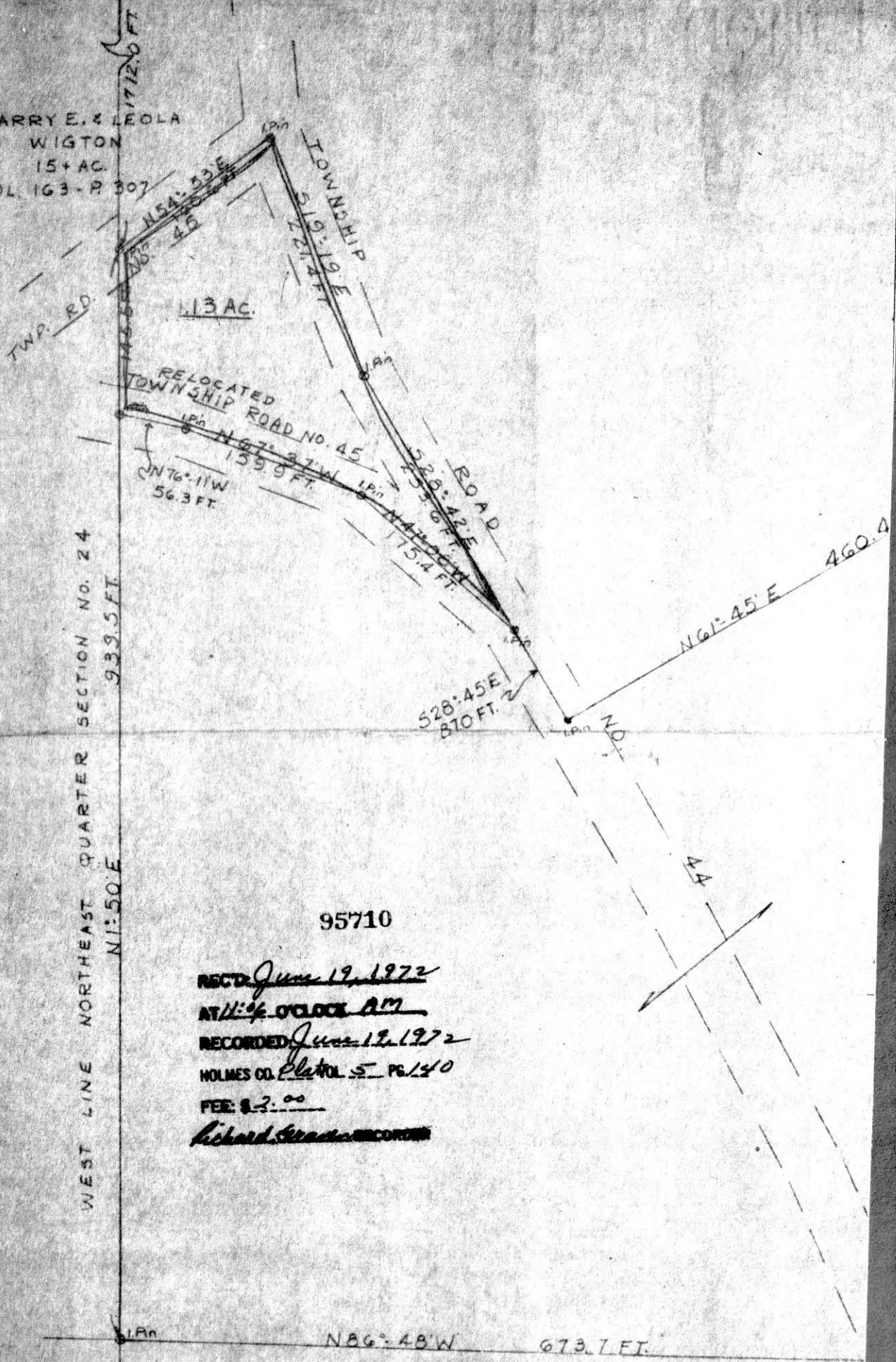


STN. MON.
N.W. COR.
S.W. QR.
S.E. QR
SEC. 17

HARRY E. & LEOLA
WIGTON
15+ AC.
VOL. 163-P 307



95710

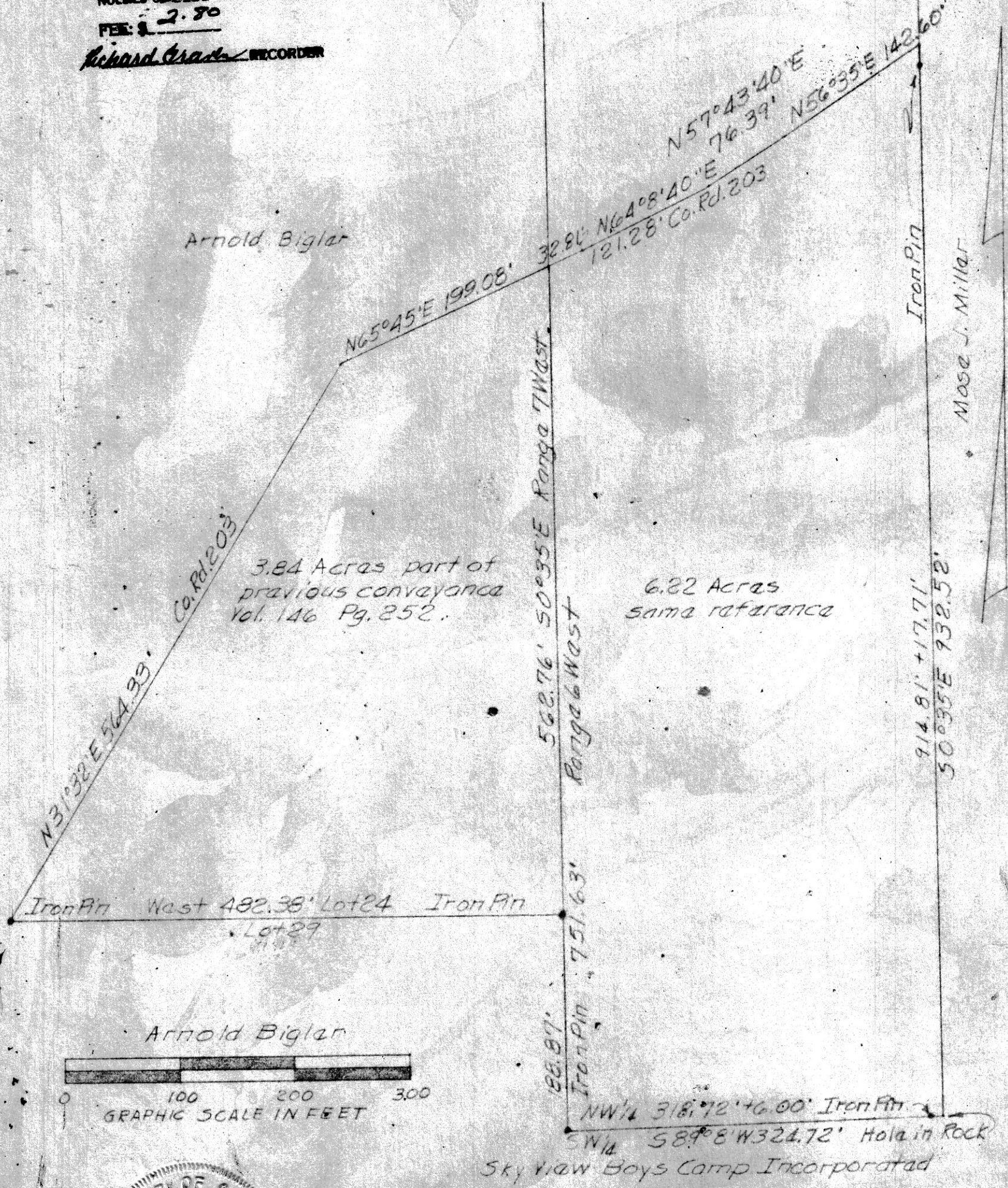
RECTD June 19, 1972
 AT 11:06 O'CLOCK AM
 RECORDED June 19, 1972
 HOLMES CO. Plat Vol 5 PG 140
 FEE: \$ 2.00
Richard ...

95740

RECTD June 22, 1972
AT 10:12 O'CLOCK P.M.
RECORDED June 22, 1972
HOLMES CO. Plat VOL 5 PG 140
FEE: \$ 2.80
Richard Crabb RECORDER

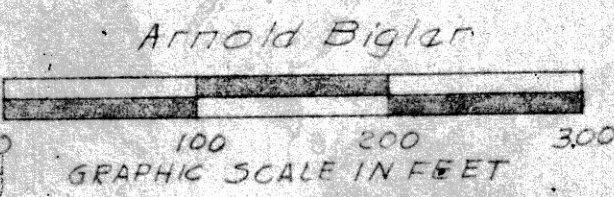
Bessie Haffhil

Arnold Biglar



3.84 Acres part of previous conveyance Vol. 146 Pg. 252.

6.22 Acres same reference



PLAT OF A SURVEY FOR
BESSIE HAFFHIL
 Situated in Hardy Township, Holmes Co., Ohio.
 Known as part of Lot 24, 1st 1/4 T9N, & R7W, and part
 of N.W. 1/4 Fract. 516, T9N, & R6W.

Robert L. Kasner, Reg. Surveyor #5193

