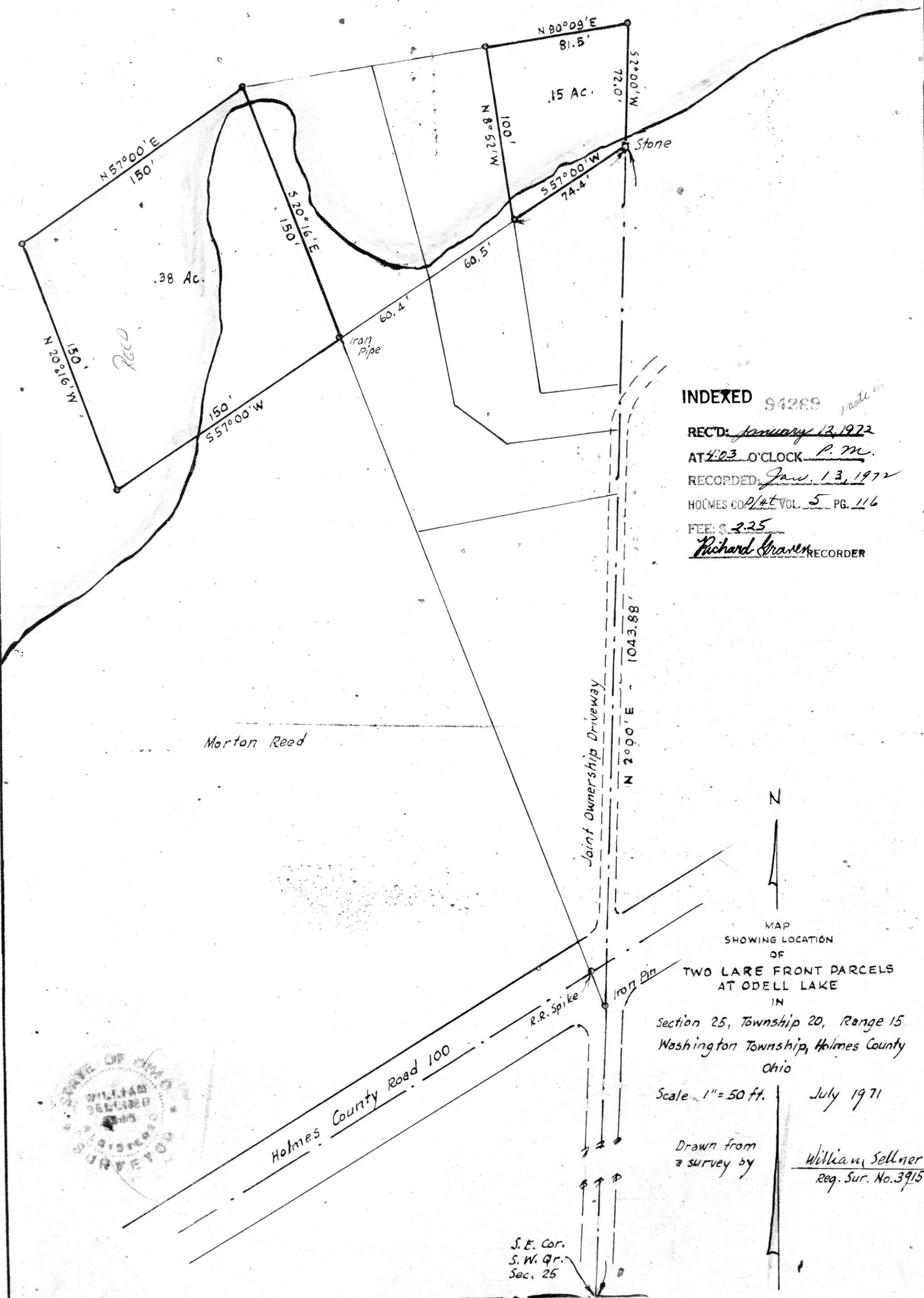


Odell Lake



INDEXED 94289 *made in*
 REC'D: January 13, 1972
 AT 4:03 O'CLOCK P.M.
 RECORDED: Jan. 13, 1972
 HOLMES CO. VOL. 5 PG. 116
 FEE: \$ 2.25
Richard Craven RECORDER

MAP
 SHOWING LOCATION
 OF
 TWO LARE FRONT PARCELS
 AT ODELL LAKE
 IN
 Section 25, Township 20, Range 15
 Washington Township, Holmes County
 Ohio

Scale 1" = 50 ft. July 1971

Drawn from
 a survey by
William Sellner
 Reg. Sur. No. 3915



S.E. Cor.
 S.W. Qr.
 Sec. 25

S