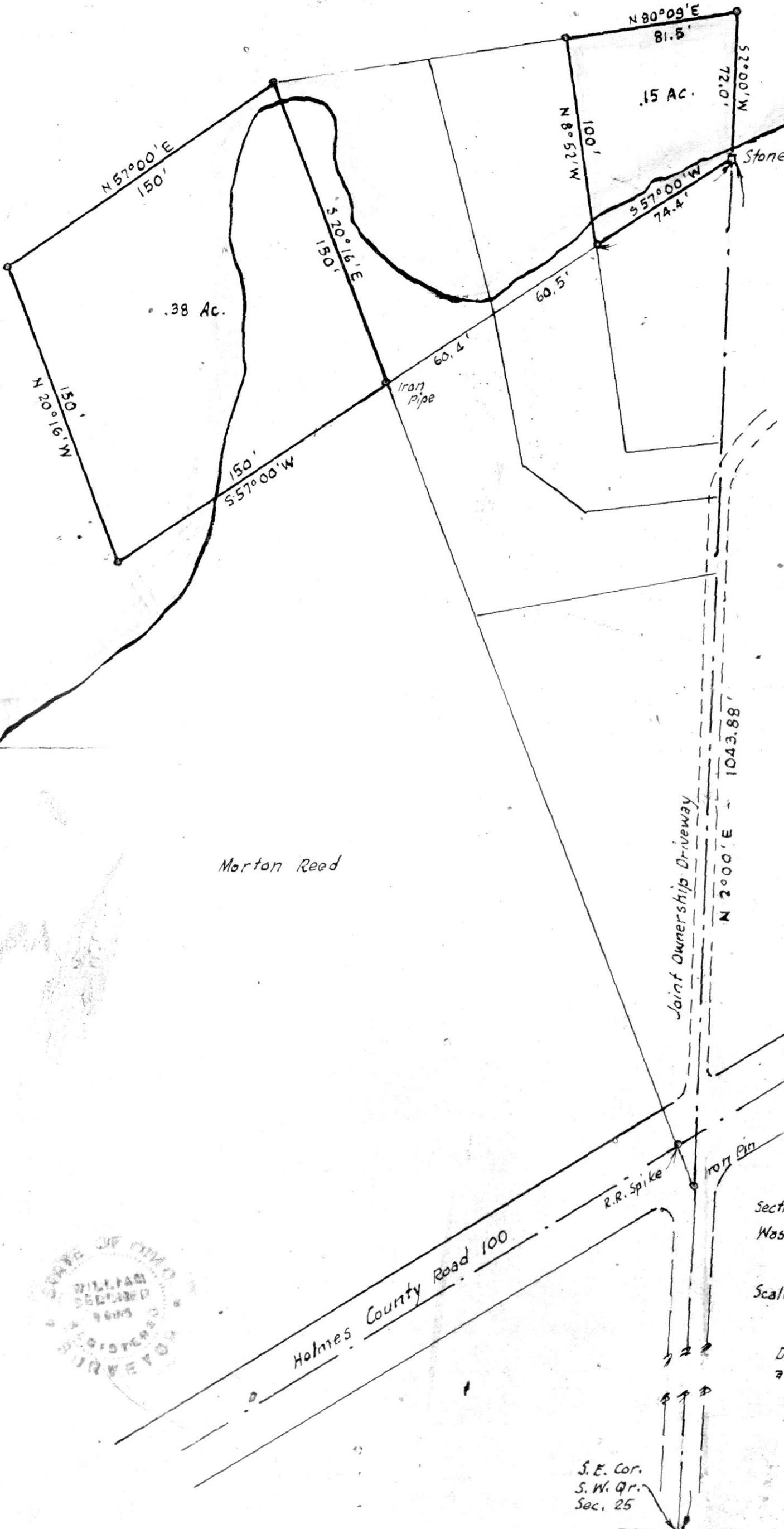


Odell Lake



9 4 2 7 0 INDEXED

REC'D: *January 12, 1912*

AT 4:04 O'CLOCK *P.M.*

RECORDED: *Jan. 13, 1912*

HOLMES CO. 2nd VOL. 5 PG. 115

FEE: \$ 2.25

Richard Strawn RECORDER

Morton Road

N



MAP
SHOWING LOCATION
OF

TWO LARE FRONT PARCELS
AT ODELL LAKE
IN

Section 25, Township 20, Range 15,
Washington Township, Holmes County
Ohio

Scale 1" = 50 ft.

July 1911

Drawn from
a survey by

William Sellner
Reg. Sur. No. 3915

S.E. Cor.
S.W. Qr.
Sec. 25

