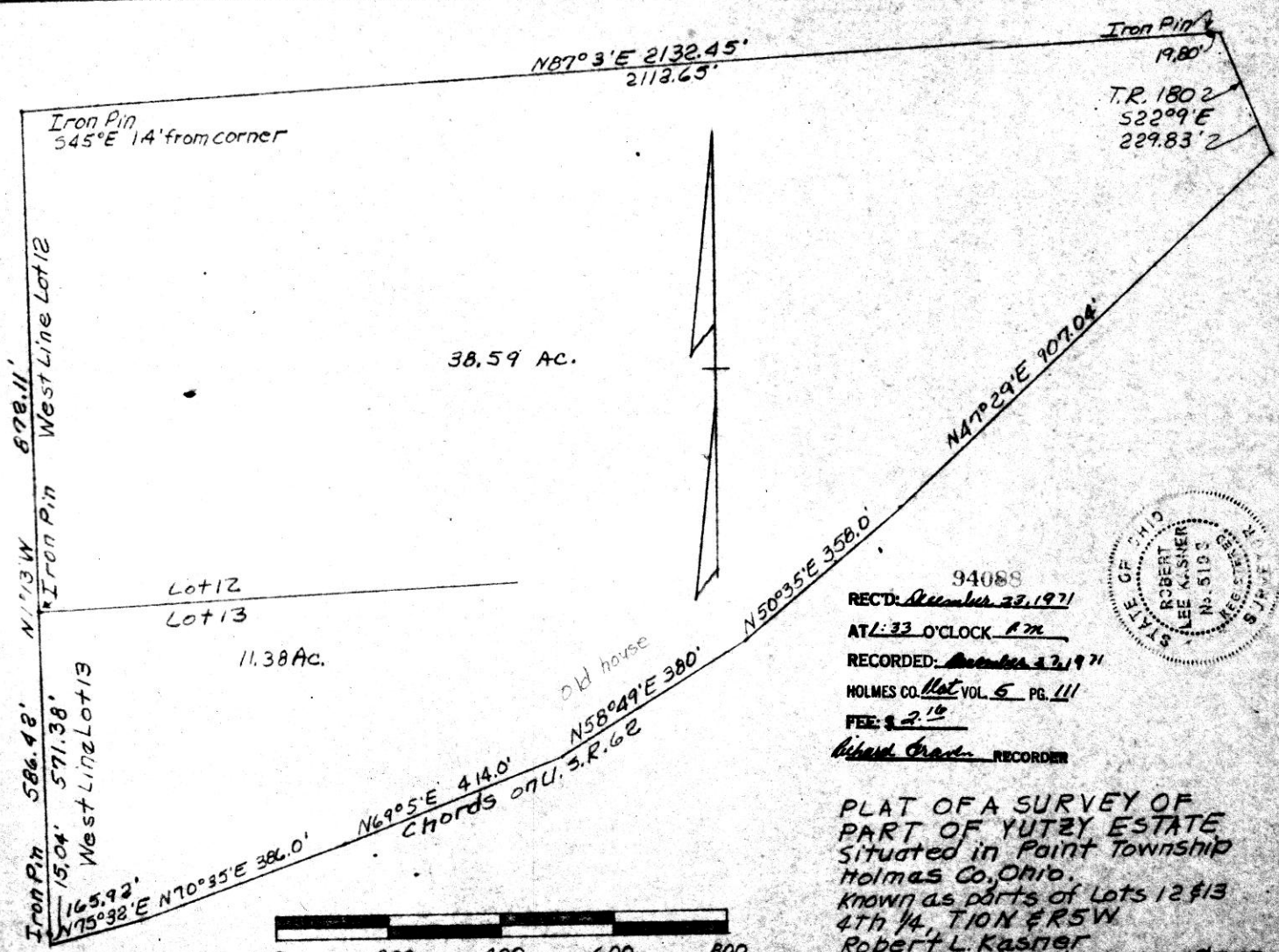


9x12



Iron Pin 545°E 14' from corner

Iron Pin 19.80'

T.R. 1802  
S22°09'E  
229.83'2

38.59 Ac.

Lot 12  
Lot 13  
11.38 Ac.

Old house

Chords on U.S.R. 62

Iron Pin 586.48' N1°13'W 678.11' West Line Lot 12

Iron Pin 15.04' 571.38' West Line Lot 13

Iron Pin 165.92' N75°38'E N70°35'E 386.0'

N69°05'E 414.0'

N58°49'E 380.0'

N50°35'E 358.0'

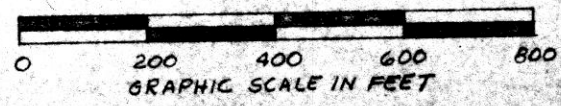
N47°29'E 907.04'

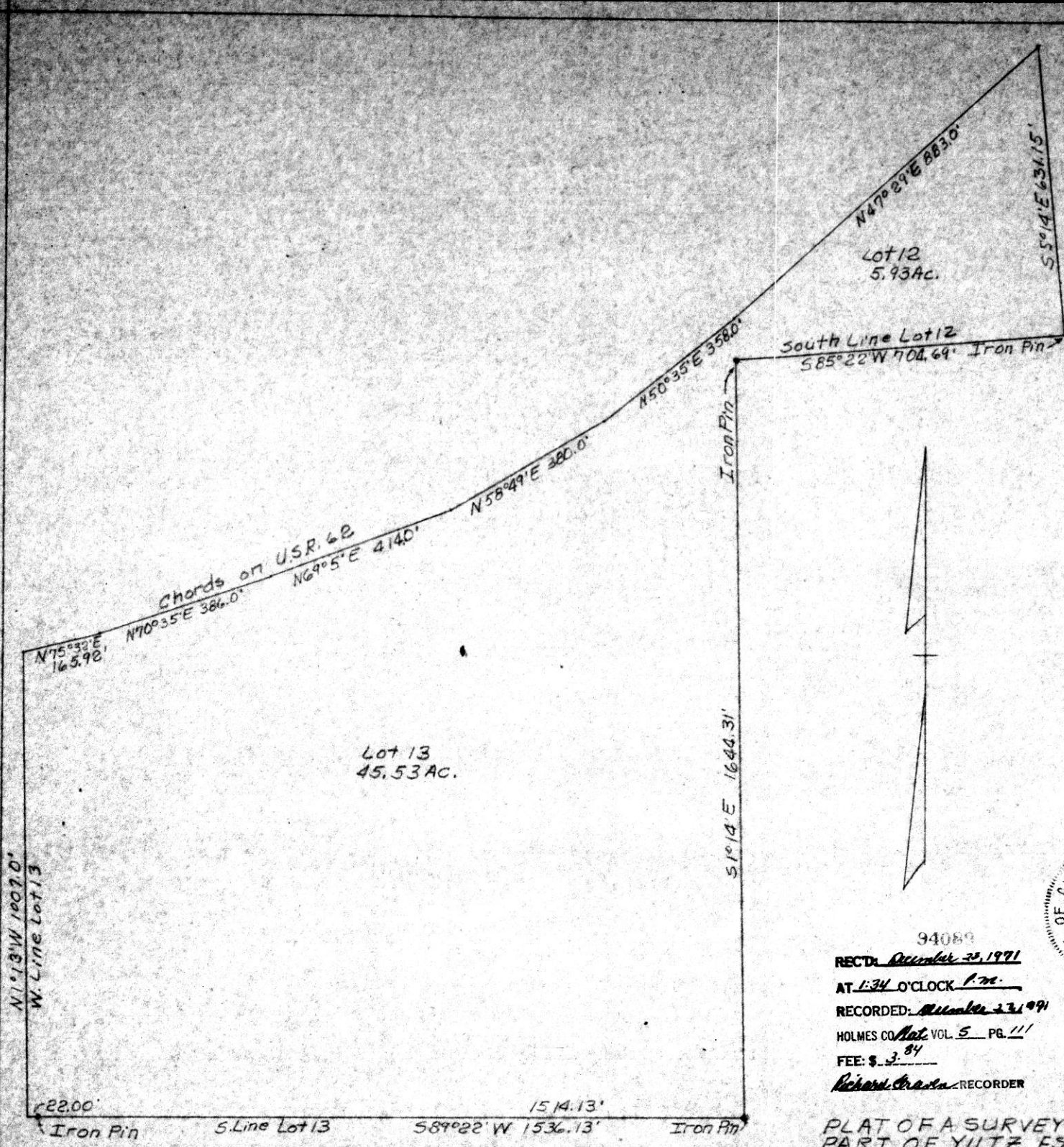
N87°3'E 2132.45'  
2112.65'



94088  
 REC'D: December 22, 1971  
 AT: 3:33 O'CLOCK P.M.  
 RECORDED: December 22, 1971  
 HOLMES CO. Lot VOL. 5 PG. 111  
 FEE: \$ 2.10  
Richard Grant RECORDER

PLAT OF A SURVEY OF  
 PART OF YUTZY ESTATE  
 SITUATED IN PAINT TOWNSHIP  
 HOLMES CO., OHIO  
 KNOWN AS PARTS OF LOTS 12 & 13  
 4TH 1/4, T10N R5W  
 Robert L. Kasner  
 Registered Surveyor #593





Lot 13  
45.53 Ac.

Lot 12  
5.93 Ac.

South Line Lot 12  
585°22'W 704.69' Iron Pin

S 1°14' E 1644.31'

N 75°30' E  
165.98'

N 70°35' E  
386.0'

N 69°5' E  
414.0'

N 58°49' E  
380.0'

N 50°35' E  
358.0'

N 47°29' E  
883.0'

S 5°14' E  
631.15'

N 1°13' W  
1907.0'

W Line Lot 13

22.00'

Iron Pin

S Line Lot 13

589°22' W 1536.13'

Iron Pin

1514.13'



94089

RECD: December 23, 1971

AT 1:34 O'CLOCK P.M.

RECORDED: December 23, 1971

HOLMES CO. Map VOL. 5 PG. 111

FEE: \$ 3.84

Richard Cress RECORDER



PLAT OF A SURVEY OF  
PART OF YUTZ ESTATE  
Situated in Paint Township,  
Holmes County, Ohio.  
Known as parts of Lots 12 & 13  
4th 1/4, T10N, R5W.

Robert L. Kasner  
Registered Surveyor #5193

13 X 14

94109

REC'D: December 27, 1971

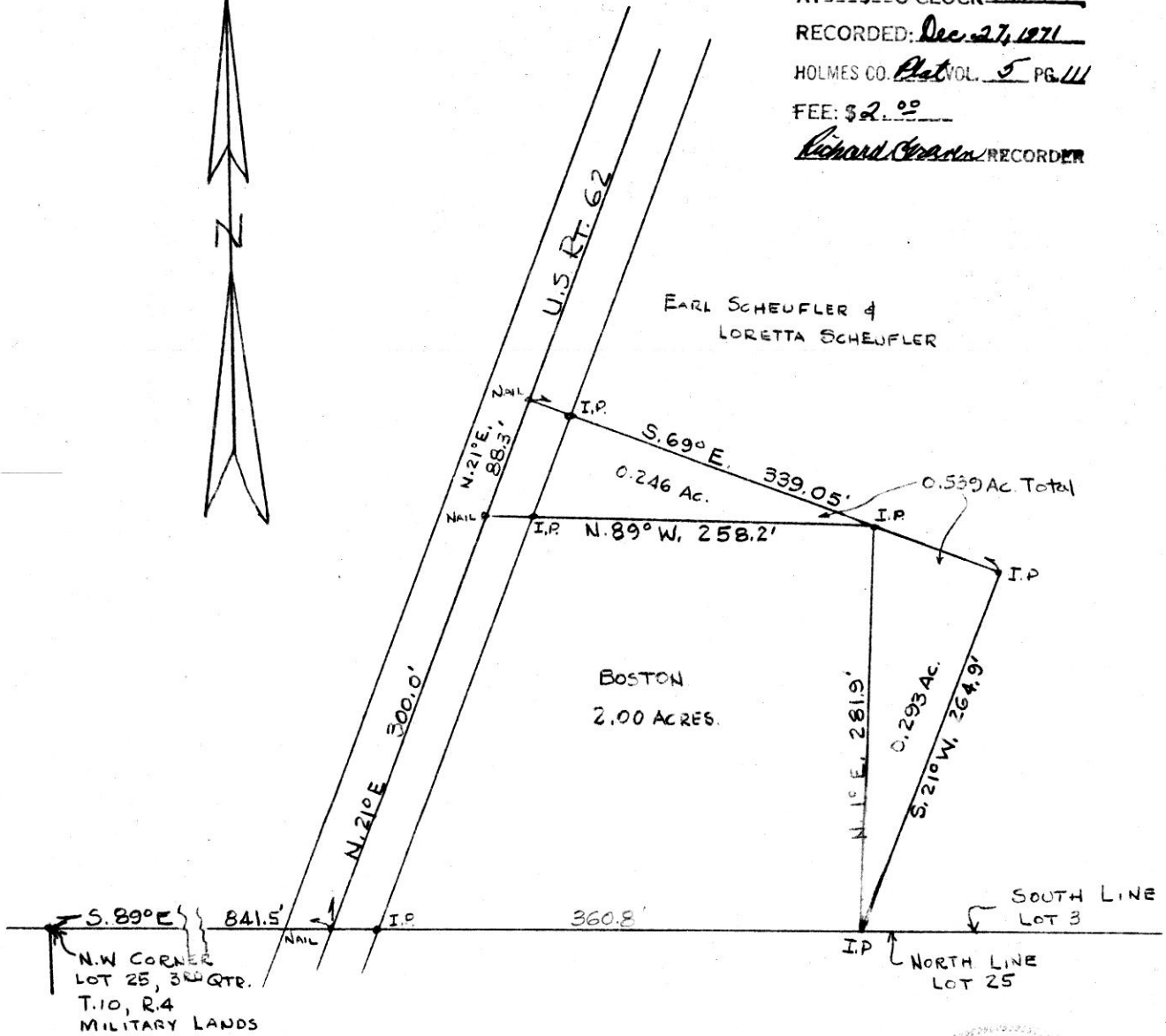
AT 9:37 O'CLOCK AM

RECORDED: Dec. 27, 1971

HOLMES CO. Plat VOL. 5 PG. 111

FEE: \$2.00

Richard Carson RECORDER



PLAT OF A SURVEY OF A PART OF  
 LOT 3, SECOND QUARTER, TOWNSHIP 10,  
 RANGE 4, MILITARY LANDS, PAINT  
 TOWNSHIP, HOLMES COUNTY, OHIO  
 TO CONVEY A PARCEL FROM SCHEUFLE  
 TO BOSTON.

SCALE - 1" = 100'

DEC. 2, 1971

R.H. HUNSINGER, #3685, REG. SURVEYOR.



94107

RECTD: December 29, 1971

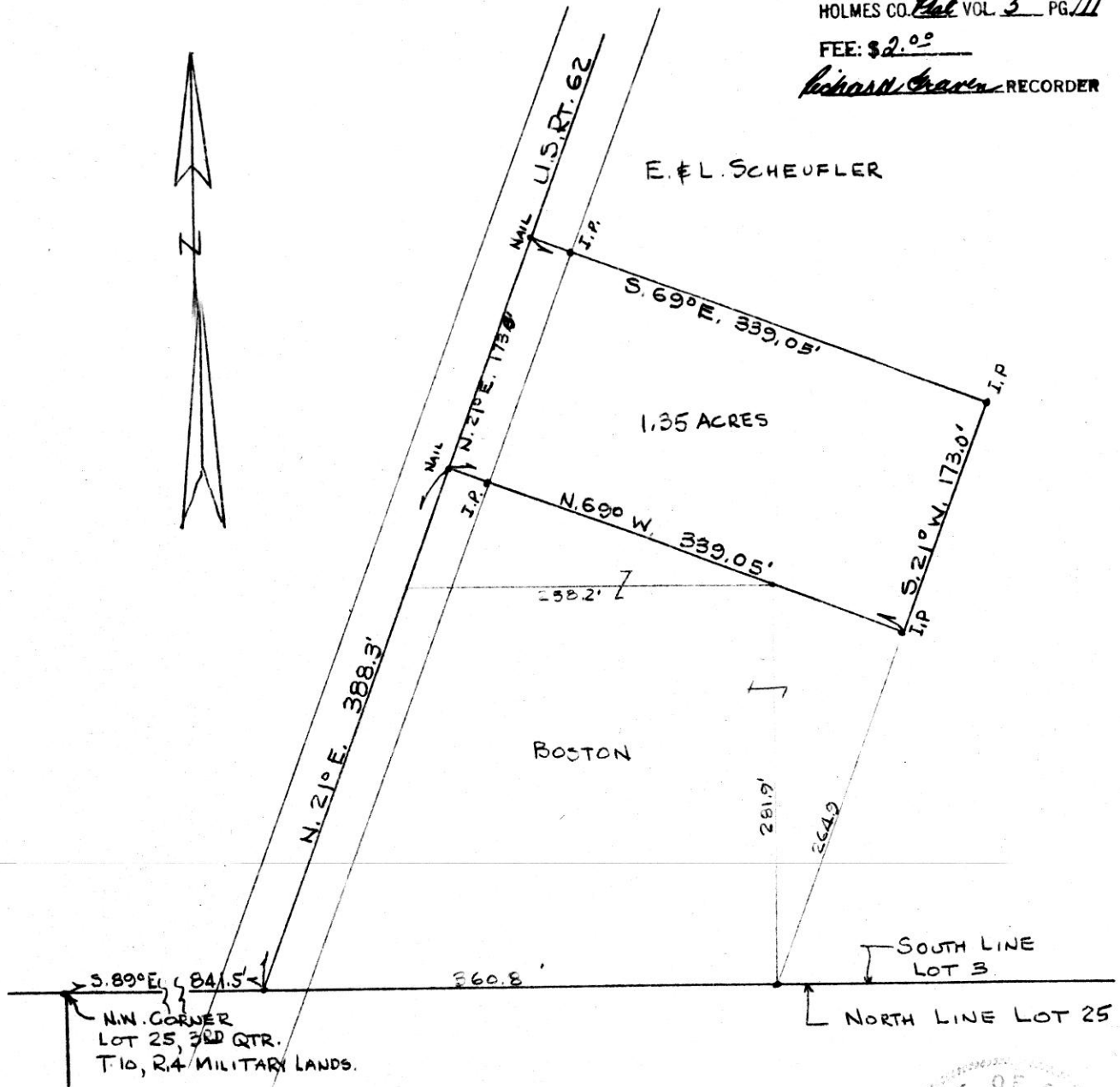
AT 9:35 O'CLOCK AM

RECORDED: Dec. 27, 1971

HOLMES CO. Plat VOL. 5 PG. 111

FEE: \$2.00

Richard Green RECORDER



PLAT OF A SURVEY OF A PART OF LOT 3,  
 SECOND QUARTER, TOWNSHIP 10, RANGE 4,  
 MILITARY LANDS, PAINT TOWNSHIP, HOLMES  
 COUNTY, OHIO TO CONVEY A PARCEL FROM  
 SCHEUFLEL TO BALLER  
 SCALE - 1" = 100'  
 DEC. 2, 1971  
 R.H. HUNSINGER, #3685, REG. SURVEYOR.

