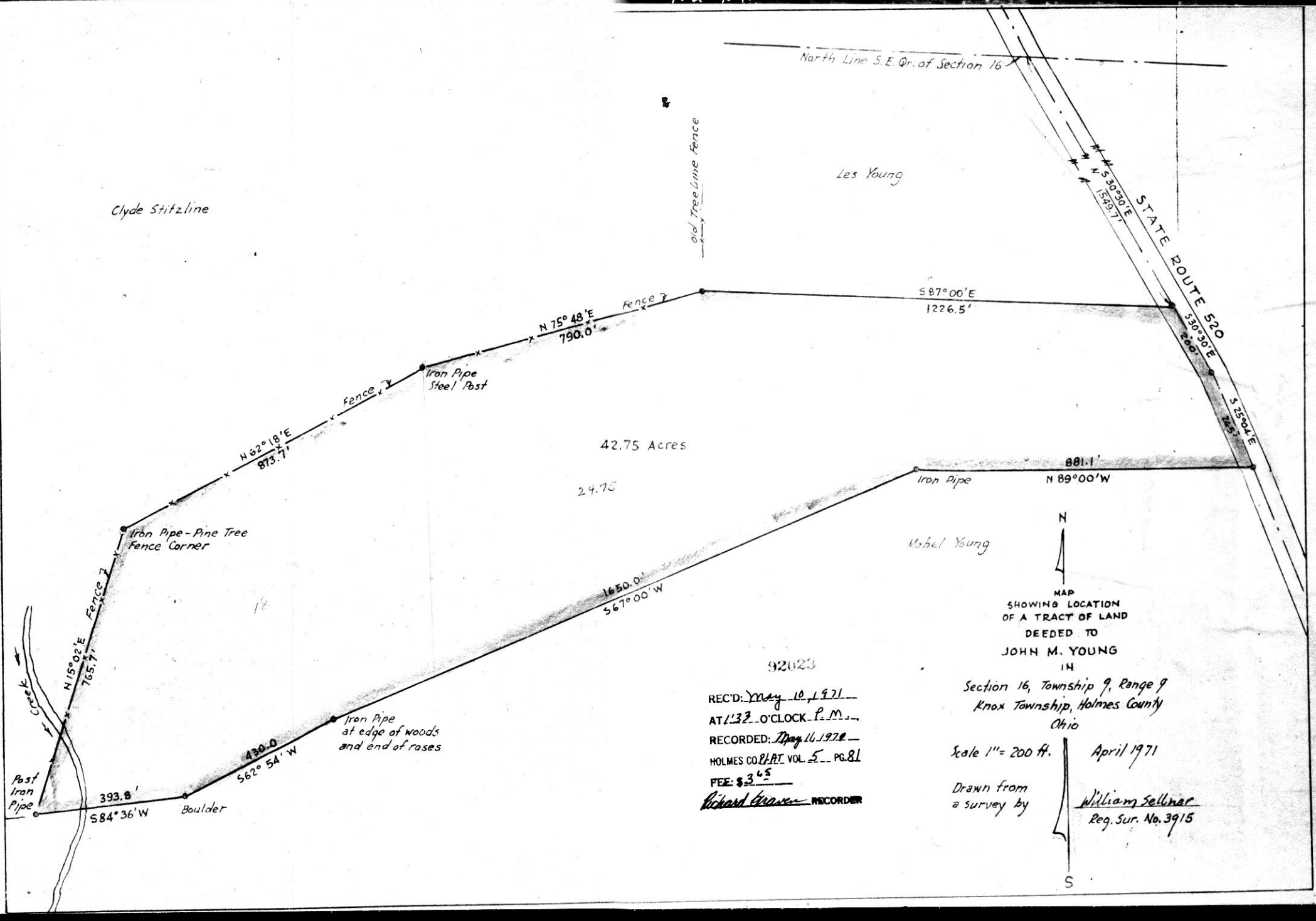


16 1/2" x 11"



Clyde Stitzline

Les Young

42.75 Acres

24.75

Mabel Young



MAP
SHOWING LOCATION
OF A TRACT OF LAND
DEEDED TO

JOHN M. YOUNG
IN

Section 16, Township 9, Range 9
Knox Township, Holmes County
Ohio

Scale 1" = 200 ft.

April 1971

Drawn from
a survey by

William Sellner
Reg. Sur. No. 3915

92023

REC'D: May 10, 1971
AT 1:32 O'CLOCK P.M.
RECORDED: May 16, 1971
HOLMES CO. PLAT VOL. 5 PG. 81
FEE: \$3.65
Richard Graves RECORDER

YODER - COBLENTZ - SURVEY
 NORTH WEST QUARTER SECTION 32
 TOWNSHIP 15 RANGE 12
 SALT CREEK TOWNSHIP
 HOLMES COUNTY, OHIO
 COMPLETED MAY 8, 1971

92077

INDEXED

RECT: May 17, 1971

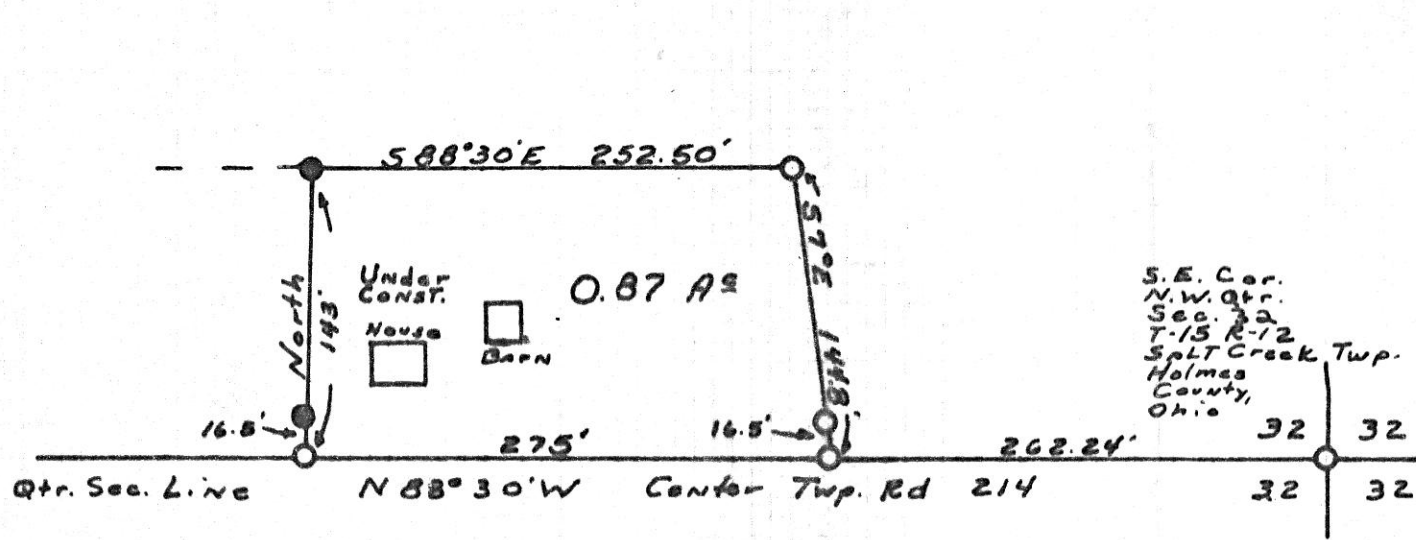
AT 3:47 O'CLOCK P.M.

RECORDED: May 18, 1971

HOLMES CO. PLAT VOL. 5 PG. 81

FEE: \$ 2.00

Richard Evans RECORDER



○ Pin Set
 ● Pin Fd
 Scale 1"=100'
 Ref:
 Vol 176-335

I CERTIFY THIS SURVEY MADE FOR JOHN J. S. YODER AND WYMAN COBLENTZ TO BE CORRECT TO THE BEST OF MY KNOWLEDGE AND BELIEF.

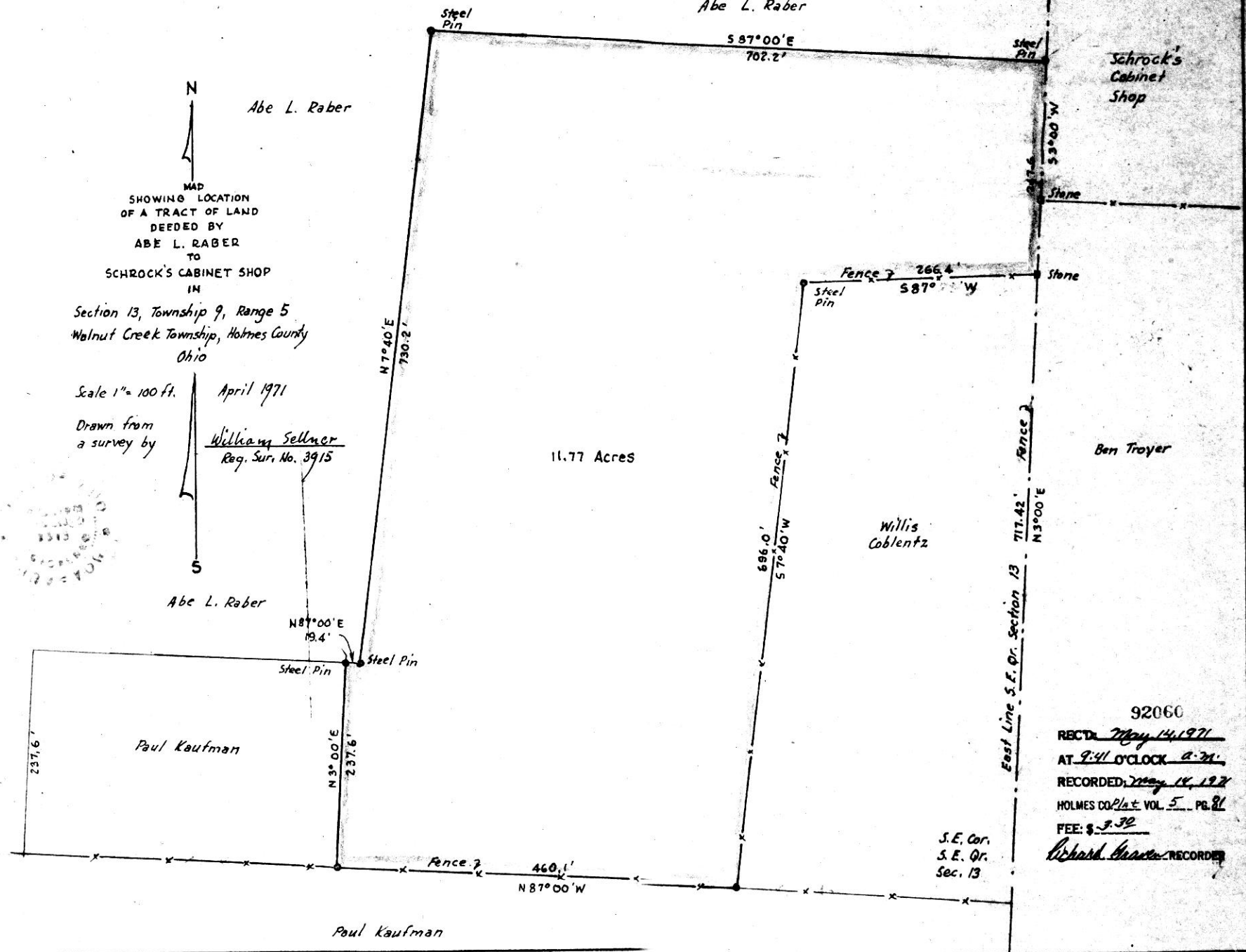
SIGNED William T. Burkey
 WILLIAM T. BURKEY
 REGISTERED SURVEYOR #5107
 STATE OF OHIO



15" x 11"

MAP
SHOWING LOCATION
OF A TRACT OF LAND
DEEDED BY
ABE L. RABER
TO
SCHROCK'S CABINET SHOP
IN
Section 13, Township 9, Range 5
Walnut Creek Township, Holmes County
Ohio

Scale 1" = 100 ft. April 1971
Drawn from
a survey by
William Sellner
Reg. Sur. No. 3915



East Line S.E. Qr. Section 13
717.42' N 3° 00' E

S.E. Cor.
S.E. Qr.
Sec. 13

92060
REC'D May 14, 1971
AT 9:41 O'CLOCK A.M.
RECORDED May 14, 1971
HOLMES CO. Plat. VOL. 5, PG. 81
FEE: \$ 3.50
Richard Hoover RECORDER