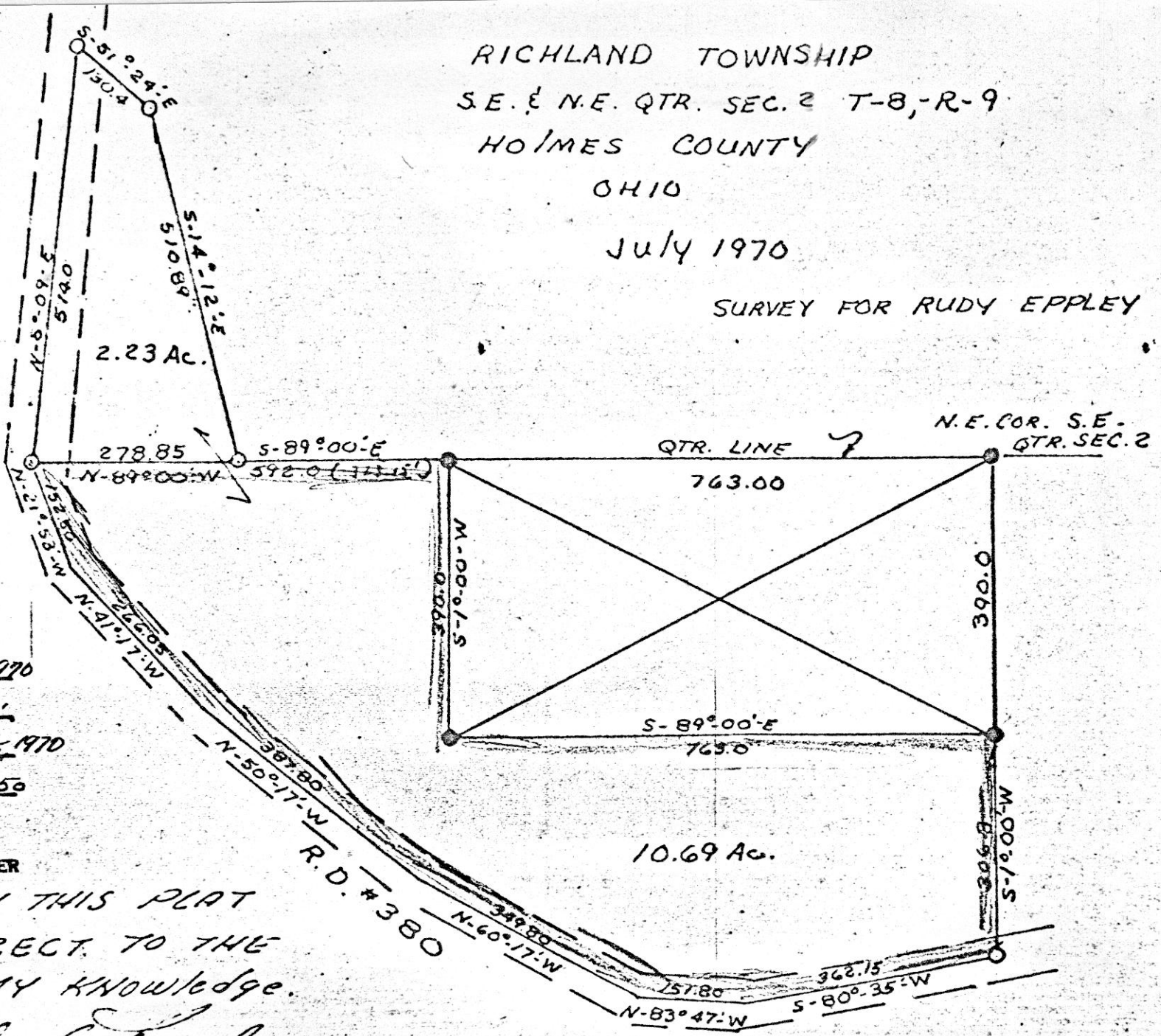


RICHLAND TOWNSHIP
 S.E. & N.E. QTR. SEC. 2 T-8, -R-9
 HOLMES COUNTY
 OHIO

JULY 1970

SURVEY FOR RUDY EPPLEY



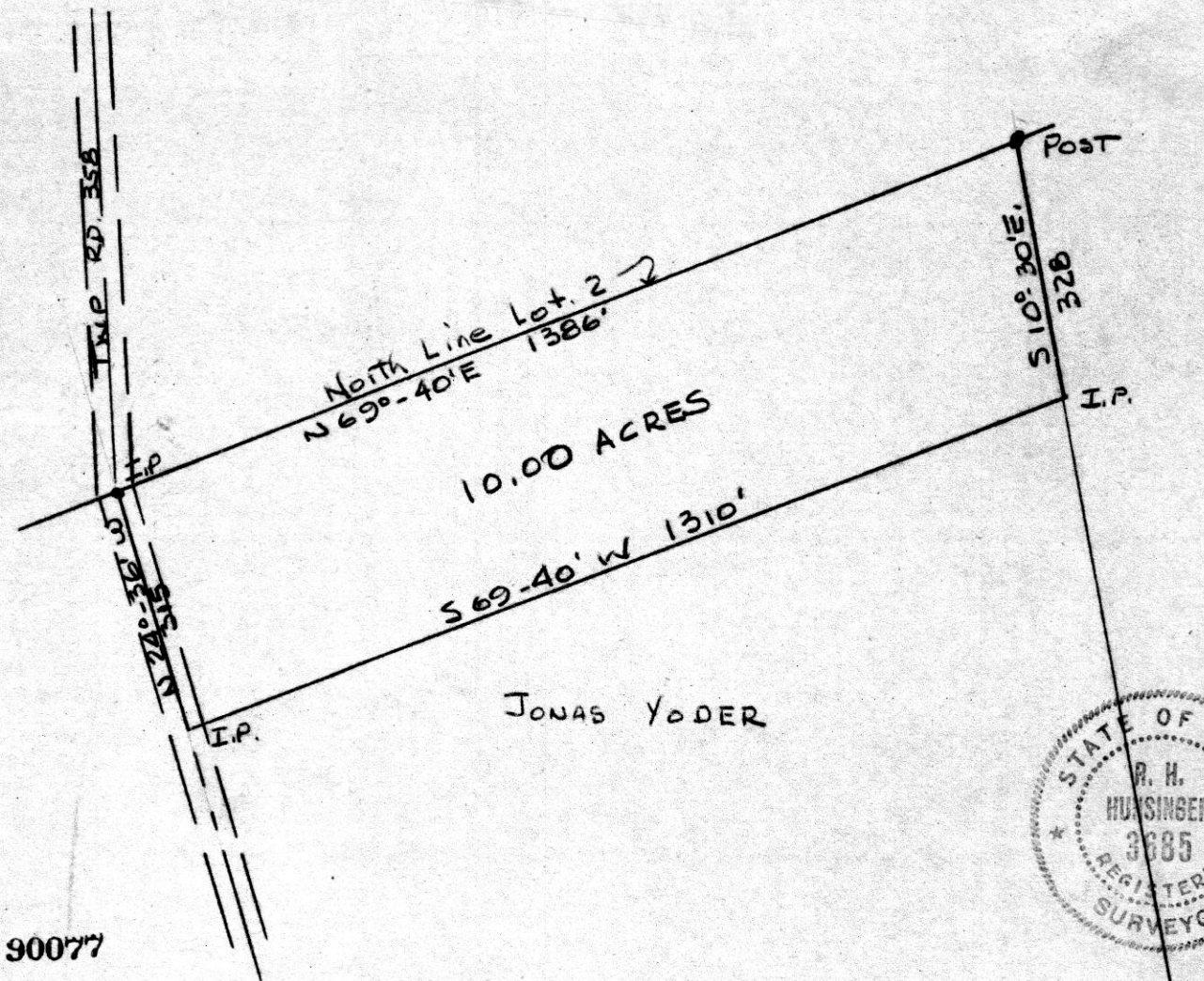
SCALE 1" = 200'
 O I.P. SET
 ● I.P. FOUND
 89941

REC'D: August 25, 1970
 AT 12:53 O'CLOCK P.M.
 RECORDED: August 25, 1970
 HOLMES CO. Map VOL. 5 PG. 50
 FEE: \$ 2.00

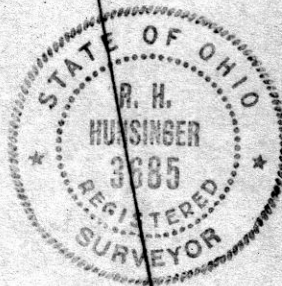
Richard Grant RECORDER

I CERTIFY THIS PLAT
 TO BE CORRECT TO THE
 BEST OF MY KNOWLEDGE.

Clyde E. Purdy
 Clyde E. Purdy R.S. #4900



90077



REC'D: September 15, 1970

AT 3:57 O'CLOCK P.M.

RECORDED: Sept 17, 1970

HOLMES CO. Map Vol 5 PG. 50

FEE: \$2.00

Richard Yoder RECORDER

PLAT OF A SURVEY OF
PART OF LOT 2, SECOND QUARTER,
TOWNSHIP 10, RANGE 4, PAINT
TOWNSHIP, HOLMES COUNTY, OHIO
SCALE 1"=200' SEPT. 7, 1970

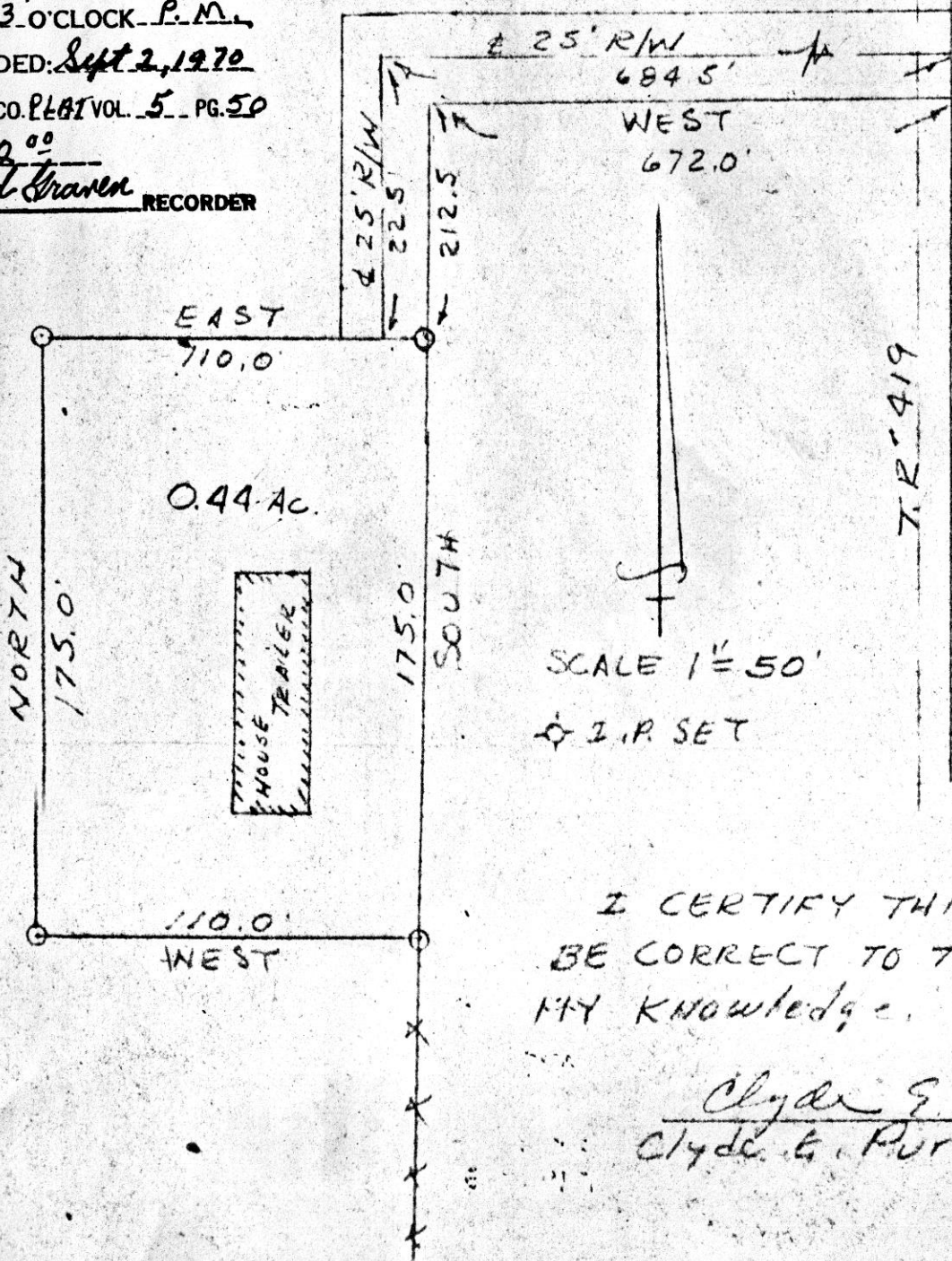
R. H. HUNSINGER, #3685, REG. SURVEYOR

RIPLEY TOWNSHIP
S.W. QTR. SEC. 13
TWP. 17 RANGE 14
HOLMES COUNTY
OHIO
JUNE 1970

89968

REC'D: September 1, 1970
AT 3:33 O'CLOCK P.M.
RECORDED: Sept 2, 1970
HOLMES CO. PLAT VOL. 5 PG. 50
FEE: \$ 2.00
Richard Craven RECORDER

WEST 13 | 13
WEST 13 | 13



South
430.0'
442.5'

I CERTIFY THIS PLAT TO
BE CORRECT TO THE BEST OF
MY KNOWLEDGE.

Clyde G. Purdy
Clyde G. Purdy RS# 4900

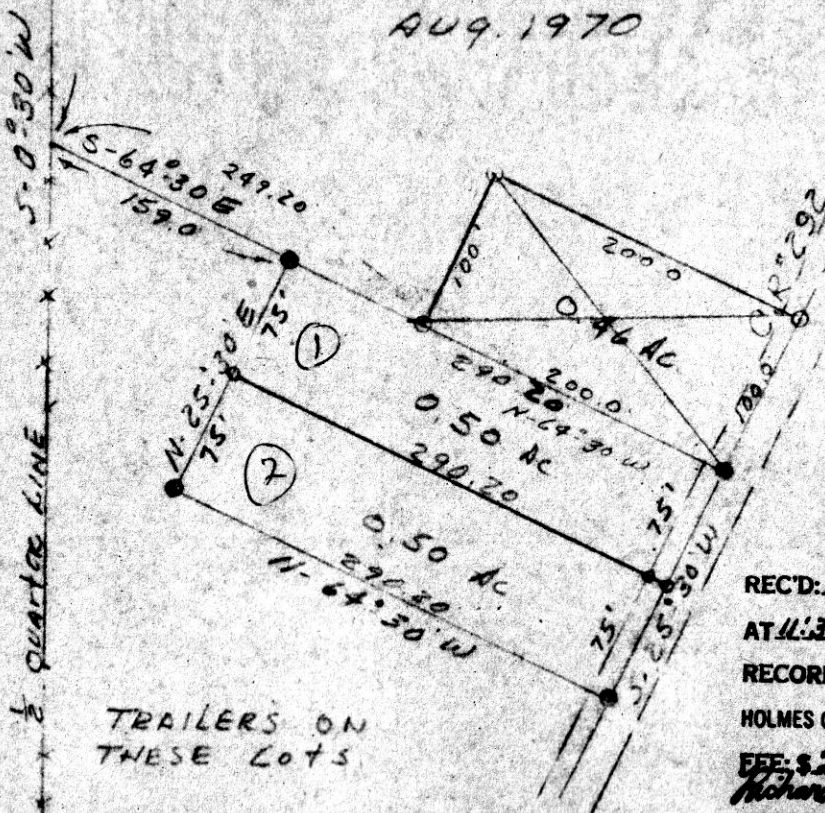
NW COR.
EAST HALF NE
QTR SECTION 7

TOWNSHIP LINE 7

KILLBUCK TOWNSHIP
NE QTR SEC. 1
TWP 8 RANGE 8
HOLMES COUNTY
OHIO

AUG. 1970

SCALE 1 1/2" = 100'



TRAILERS ON
THESE LOTS

89998

REC'D: September 3, 1970
AT 11:37 O'CLOCK A.M.,
RECORDED: Sept. 3, 1970
HOLMES CO. 241 VOL. 5 PG. 50
FF: \$2.00
Richard Brown
RECORDER

I CERTIFY THIS PLAT TO BE CORRECT
TO THE BEST OF MY
KNOWLEDGE.

Charles E. Purdy
CINCE & PURDY R.S. #4300