

88920 YODER

REC'D: February 24, 1970

AT 4:30 O'CLOCK P.M.

RECORDED: February 24, 1970

HOLMES CO. PLAT VOL. 5 PG. 30

FEE: \$ 2.00

*Richard Brown* RECORDER

LOT 24

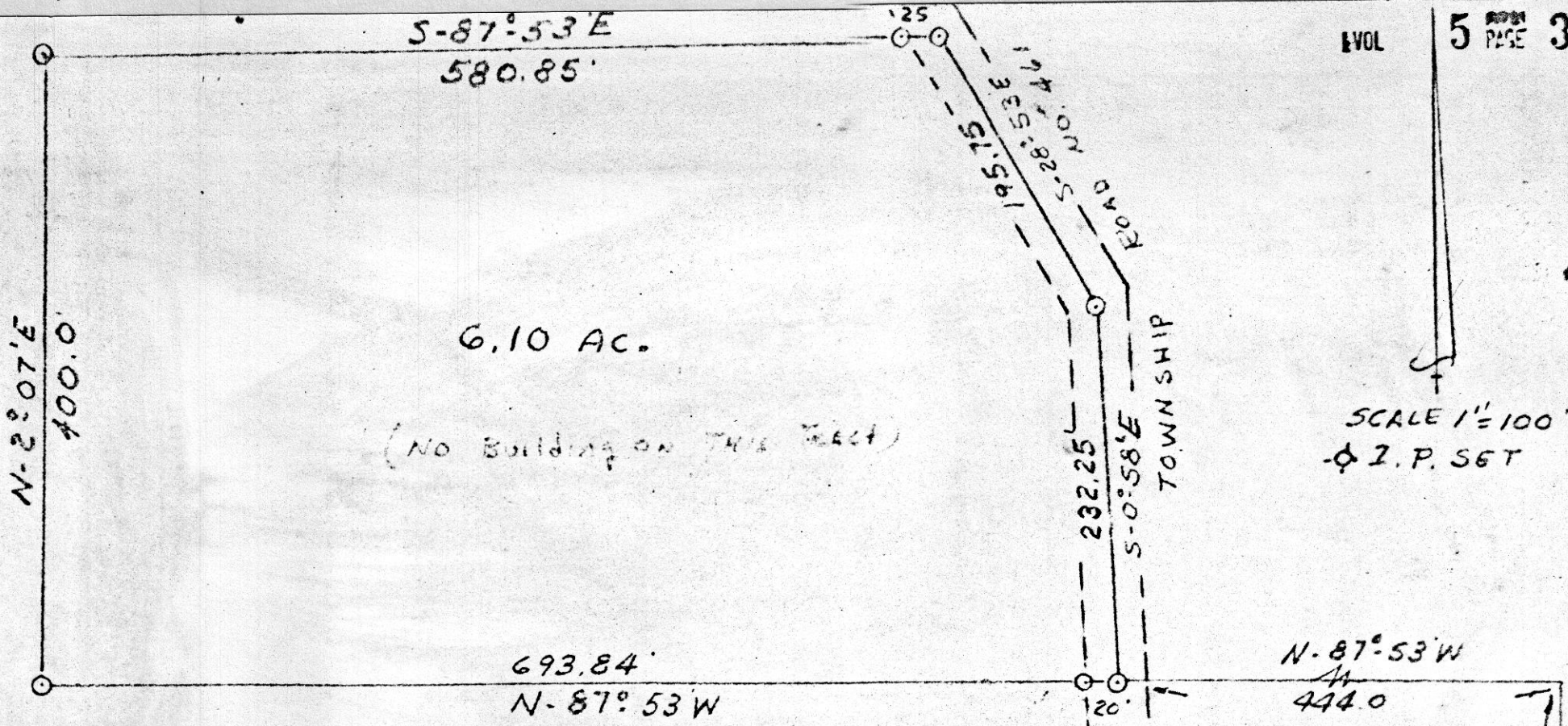
S.E. CORNER  
LOT 24

MATHIAS LOT 23



DRAWN BY  
CHECKED BY

R.H. HUNSINGER REG. SURVEYOR	No. 3685	DIV. N
PLAT OF A SURVEY OF A PART OF LOT 24, THIRD QUARTER, TWP. 10; RANGE 4; U.S. MILITARY LANDS PAINT TWP, HOLMES COUNTY, OHIO		
SCALE 1" = 100'	DATE 1-17 1970	FILE



6.10 AC.  
 (NO BUILDING ON THIS TRACT)

SCALE 1"=100'  
 I.P. SET

88932

WALNUT CREEK TOWNSHIP

REC'D: February 27, 1970  
 AT 1:48 O'CLOCK P.M.  
 RECORDED: February 28, 1970  
 HOLMES CO. Plot VOL. 5 PG. 30  
 FEE: \$ 2.00

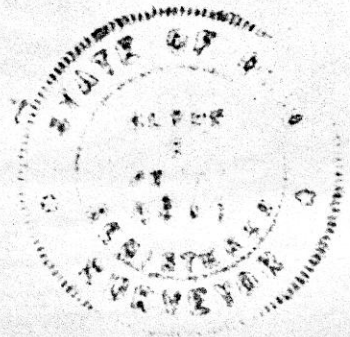
N. E. QTR. SEC. 18  
 TWP 9 RANGE 5  
 HOLMES COUNTY  
 OHIO

FEB. 1970

Richard Crasen RECORDER

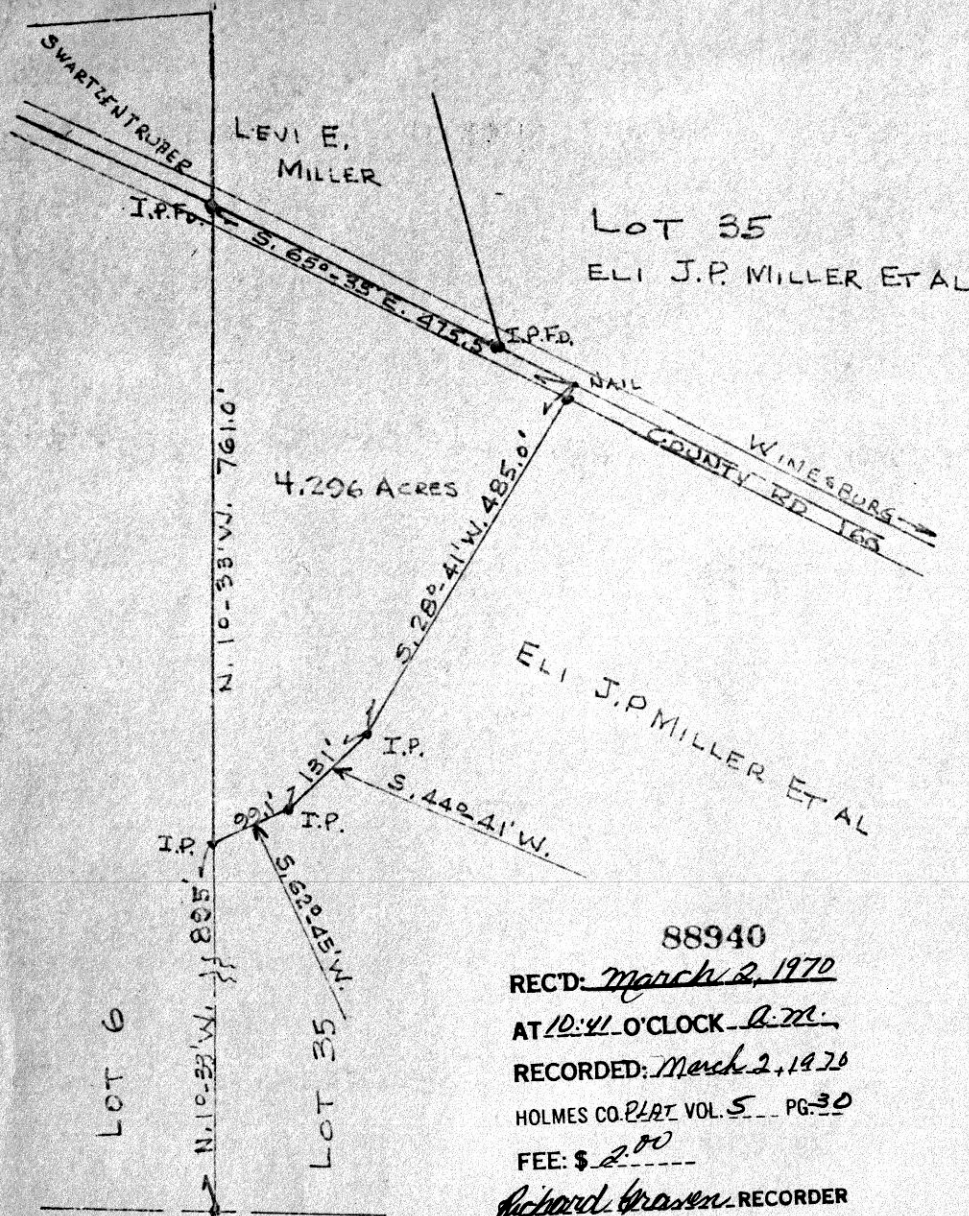
I CERTIFY THIS PLAT TO BE CORRECT  
 TO THE BEST OF MY KNOWLEDGE.

Clyde E. Purdy  
 Clyde E. Purdy RS#4900

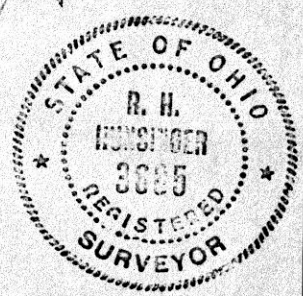


S.E. COR  
 W. 1/2 N.E. QTR  
 SEC. 18, T-9  
 R-5

7000.2 N.  
 N-2°00'E  
 675.0



88940  
 REC'D: March 2, 1970  
 AT 10:41 O'CLOCK A.M.  
 RECORDED: March 2, 1970  
 HOLMES CO. PLAT VOL. 5 PG. 30  
 FEE: \$ 2.00  
Richard Brown RECORDER



PLAT OF A SURVEY OF PART OF LOT 35,  
 FOURTH QUARTER, TOWNSHIP 10, RANGE 5,  
 U.S. MILITARY LANDS, PAINT TOWNSHIP, HOLMES  
 COUNTY, OHIO FOR ESTATE OF ELI J.P. MILLER  
 SCALE 1"=200' JAN. 21, 1970  
 R.H. HUNSINGER, #3685, REGISTERED SURVEYOR

DRAWN BY: [unclear]  
 CHECKED BY: [unclear]  
 TWP. 10, RANGE 4, U.S. MILITARY LANDS  
 PAINT TWP. HOLMES COUNTY, OHIO  
 SCALE 1"=200' DATE 1-17-70 FILE

VOL

5 PAGE 30

SALT CREEK TWP.  
S.W. QTR. SEC 1  
TWR 14 RANGE 5  
HOLMES COUNTY  
OHIO

88938

REC'D: February 28, 1970

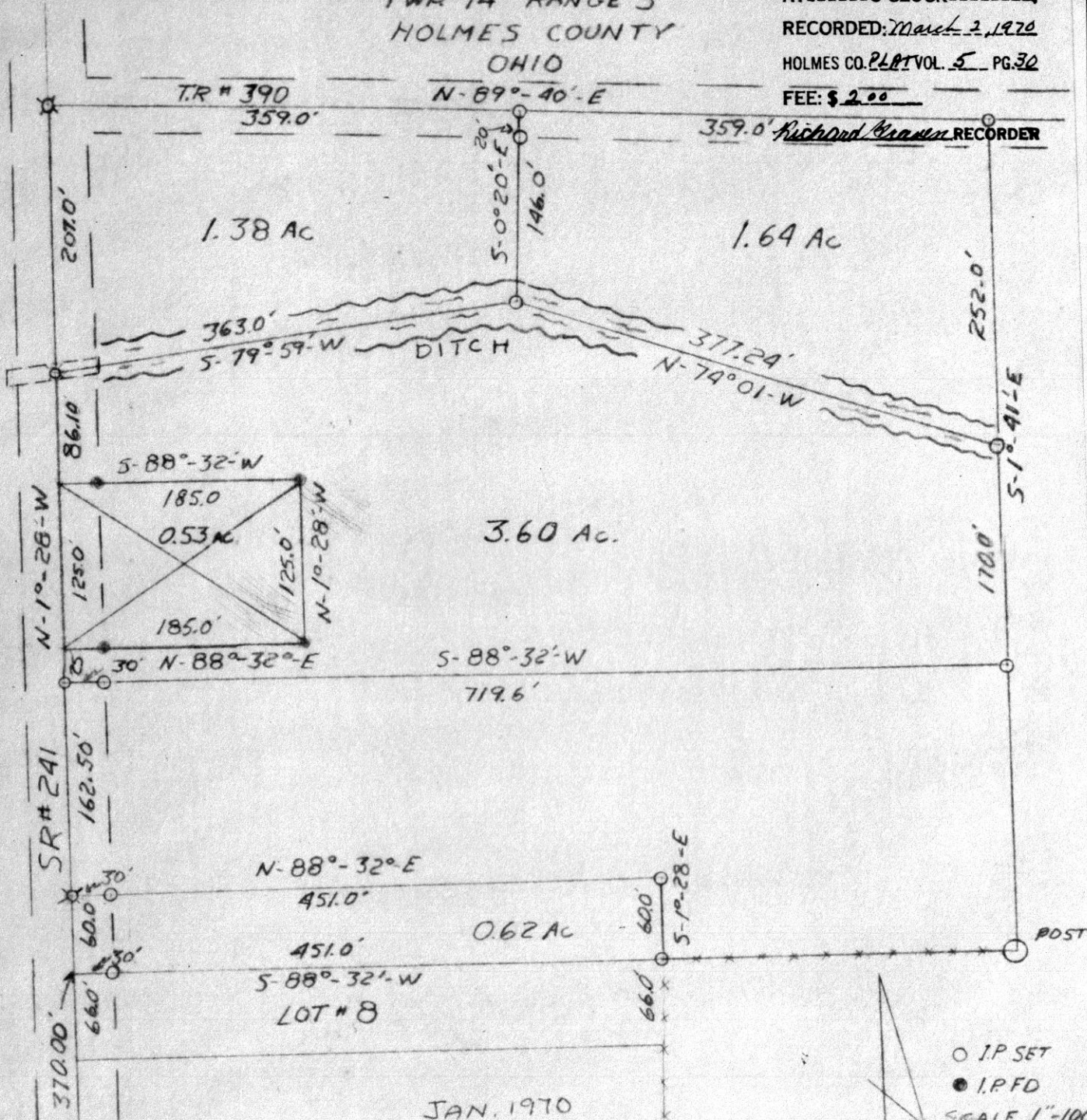
AT 9:58 O'CLOCK A.M.

RECORDED: March 2, 1970

HOLMES CO. PLAT VOL. 5 PG. 30

FEE: \$ 2.00

Richard Craven RECORDER



JAN. 1970

SW CORNER  
S.W. QTR  
SECTION 1  
SALT CREEK TWP

I CERTIFY THIS PLAT  
TO BE CORRECT TO THE BEST  
OF MY KNOWLEDGE.

*Clyde E. Purdy*  
Clyde E Purdy RS # 4900

○ I.P. SET  
● I.P.F.D.  
SCALE 1"=100'

